



Chittering Landcare Centre



Annual Report

2014

Foreword - Across the Gate



This year has once again has been particularly busy for the landcare team with many projects completed and the usual ongoing activities undertaken. The landcare groups in our sub region have once again signed a memorandum of understanding to work together to undertake projects, seek funding and maintain the landcare centre as a major resource. It is important that the collaboration between these groups is encouraged to ensure the long term future of landcare in the Ellen Brook and Brockman River catchments.

The Ellen Brockman Integrated Catchment Group continues to lead the way with ongoing water quality monitoring and analysis of the Ellen Brook and Brockman River, carried out by Bonny Dunlop and Megan O'Grady. The group continues to collaborate with the Swan River Trust in the maintenance of the drainage nutrient intervention sites on the Ellen Brook and the planting of 50,000 plants into the large Ellen Brook wetland created at Belhus. Maintenance and planting at the Belhus Reserve at the Millhouse Street Bridge, a reserve vested with the group, continues including the fire breaks to compliance level.

Officer time is dedicated to providing environmental advice to the shire of Chittering and the City of Swan about planning issues that impact waterways, wetlands, groundwater resources and remnant vegetation and outlining the need to protect these natural resources. Residents are helped with funding applications so they may carry out environmental restoration on their properties and protect their native vegetation. Advice is also provided on property management, soils, plant and weed identification, feral animal control and water issues.

The feral pig program that had its beginning with a grant from the McCusker Foundation four years ago has increased its profile and received grants from the state government and has been very successful with a reduction in pig numbers. Sue Metcalf attended the 16th Australasian Vertebrate Pest Conference in May held in Brisbane as a result of us receiving a prize for on ground excellence and also made a presentation of the work carried out here in Chittering. Other feral animals such as rabbits, feral cats and foxes are also targeted through the Red Card for the Red Fox program.

The big project to create a wildlife corridor through revegetation and protection of remnant vegetation from the Bindoon Training Area across to the Boonanarring Nature Reserve, thus connecting two Important Bird Areas (IBAs) for the Carnaby's Cockatoo continues with funding from Perth Region NRM.

Chittering Landcare Group conducted a range of successful workshops, organised by Megan O'Grady. Many issues were covered including dieback, animal husbandry and the necessity of complying with the National Livestock Information System, keeping of horses on small properties, how to erect a suitable fence, snake awareness, feral animal control and weeds. Attendees evaluated the workshops who indicated an extremely good acceptance as they provided information and skills which were not available anywhere else.

The group undertook a number of revegetation projects, maintained the Landcare Centre, added to its herbarium, conducted a number of flora surveys in reserves for Chittering Shire, provided environmental advice to the Shire of Chittering and showed two Cheviot sheep at the Perth Royal Show in the Heritage Sheep exhibition.

Keeping in touch with community has been a focus for us by using facebook, email bulletins, newsletters and our revamped website, a "work in progress". We have reassessed our communication plan for next year to improve our connection to the community and our committees.

North Swan Landcare Group have changed their trading name to better reflect the area in which they operate. So the Bullsbrook Landcare Group is born. This group continues to undertake projects for Dieback treatment and mapping of reserves within the City of Swan including Burley Park, Bullsbrook Nature Reserve and the Bush Forever site at the Bullsbrook College. Revegetation and weed control in the Bulls Brook sub catchment is now in its eighteenth year, a great achievement. The Swan River Trust Junior River Guardians again came to plant at the Bridle Trail despite the weather on the day being less than favourable.

Foreword

- Across the Gate

The Wannamal Lake Catchment Group, after more than ten years of activity had gone into a re-evaluation period but this year have attempted to revive the group's activities beginning with a sundowner in October where Sabrina Hahn of ABC garden guru fame, presented a Q and A session, a presentation by Jan Bant on the Western Swamp Tortoise and Sue Metcalf on feral pig control. This evening proved successful and we look forward to more activities and projects next year.

Bird monitoring within reserves of the catchments carried out on a monthly basis by the Chittering Bird Group are used to evaluate environmental outcomes and indicate possible changes in habitat condition or climate change effects. The counting of the Carnaby's black cockatoos at the Granville Park roost is carried out monthly giving us four years of excellent data about the movements of the birds and their numbers. This will be supported by a citizen science project to record where flocks of cockatoos are at any one time, the size of the flock and what plants they are eating.

Sue Pedrick has been successful in starting up a small group of volunteers in Gingin to undertake the recovery of the bushland at the cemetery. The Gingin Environmental Group has its beginnings! Sue also attended the Australian Native Plant Conservation conference held in Launceston while she was on holiday in Tasmania, bringing back many ideas to incorporate into our work.

Volunteers from the local community, St Mary's College, Junior River Rangers, Guildford Grammar School, Bullsbrook College, Tronox employees, Swan River Trust employees and the trainee Singaporean pilots from the RAAF Base Pearce have planted over 153,000 plants in the catchment this year. Overall, the Groups have completed 30 projects in 2014 to the value of \$609,084 received from grants and contract work with a greater than equivalent value of in-kind input from other stakeholders and volunteers. This means at least \$1.4 million dollars of investment in landcare within the Ellen Brockman catchments.

I was privileged to attend the National Landcare Conference in Melbourne, thanks to Perth Region NRM, where I gleaned ideas that can be introduced into our plans for next year including the use of social media to connect with younger people, planning for global trends, raising awareness of "paddock to plate" knowledge of what we eat and innovative farming methods.

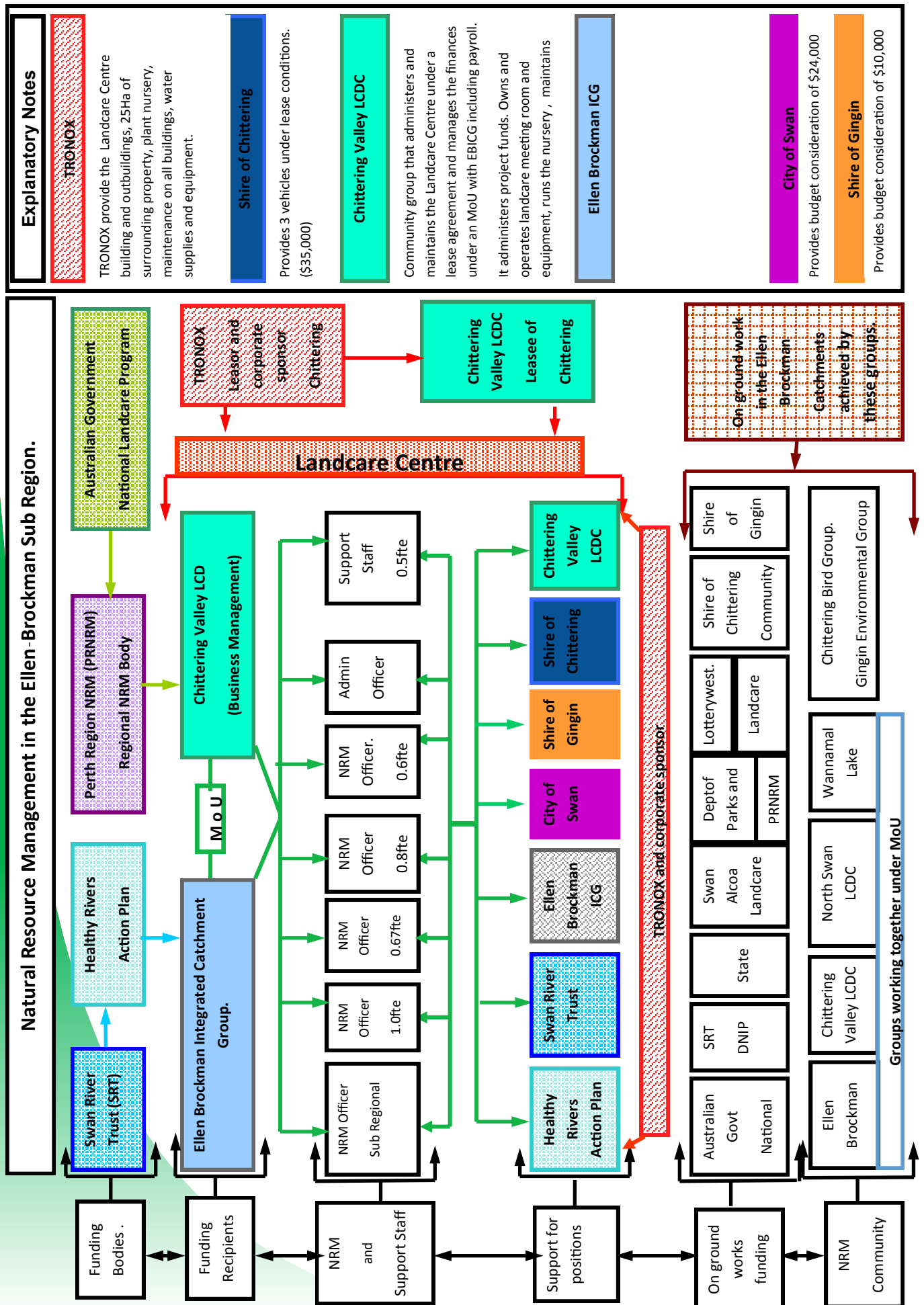
Megan and Bonny attended the National Acid Sulphate Soils Conference where they gained invaluable insight and the latest information about this growing problem.

A Federal Government Senate enquiry into the National Landcare Program was undertaken this year to which we made two submissions. I was also invited to be interviewed by the Senate Committee when they came to Perth in October. While landcare groups such as ours can adapt to changing governments and government policies, it has become increasingly difficult to source funds to employ natural resource management officers. This was a recurring story, not only for us but also for many other groups interviewed on the day.

All this landcare work is made possible only by the support of the committee members who give their time freely to ensure our groups function at the highest level while looking to maintain their long term viability and community volunteers. None of this would be possible without support of our funding organisations; Swan River Trust, Department of Parks and Wildlife, Perth Region NRM, Swan River Trust Alcoa Landcare Program, Shire of Chittering, City of Swan, Shire of Gingin, State Government NRM, Tronox and Midland Brick.

I would like to thank Megan, Bonny, Sue Metcalf, Sue Pedrick, Samantha, Beverly, Alex, Ed and Stephen who make up our "Landcare Team" at the Landcare Centre and to whom nothing is impossible. We all look forward to next year with the hope that in these tightening financial times, we can secure our future.

Rosanna Hindmarsh
Coordinator.





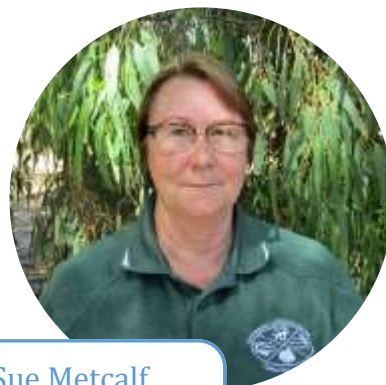
Rosanna Hindmarsh

Rosanna Hindmarsh
Executive Officer

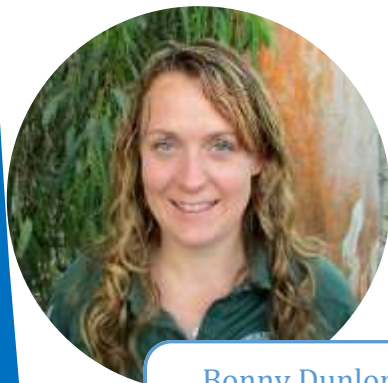
Rosanna with her wealth of knowledge and her many years experience, coordinates all of the landcare centre's operations, and still finds time to plant a few trees every year.

Sue Metcalf
Natural Resource Management Officer

Sue has a background in Local Government and makes submissions on development and policy proposals. Sue also runs the successful feral animal campaign.



Sue Metcalf



Bonny Dunlop

Bonny Dunlop
Natural Resource Management Officer

Bonny coordinates and manages all rehabilitation and water quality projects. Bonny also is a Dieback Committee member.



Megan O'Grady

Megan O'Grady
Natural Resource Management Officer

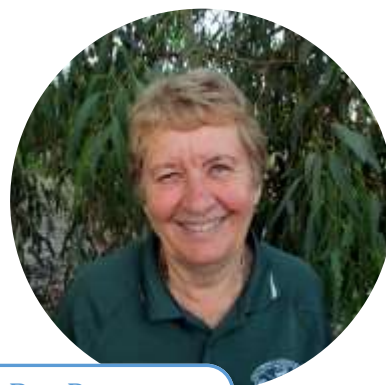
Megan looks after communications and workshops at landcare, and assists Bonny with project management.



Sue Pedrick

Sue Pedrick
Natural Resource Management Officer

Sue prepares management plans for reserves, maintains the centre herbarium and assists in setting up the wildflower festival.



Bev Paton

Bev Paton
aka 'Wonder Woman'

Bev looks after all the catering, cleaning and maintenance of the landcare centre, with the assistance of Alex Mackie.



Samantha Young

Samantha Young
Admin/Accounts Officer

With a background in the financial services industry, Sam looks after the centre's administration and accounting duties. Sam has the most important task of making sure we all get paid on time!



Community Groups

Ellen Brook Integrated Catchment Group

Words from the Chairperson:

EBICG is the other major partner operating out of the Chittering Landcare Centre. It is more of an active rather than advisory body although recently EBICG staff have been able to mentor the newly appointed Environmental Officer at the Shire of Toodyay. Other Local Governments in our catchment using our advice are Gingin and the City of Swan.

Each year during the winter and autumn a number of water sampling runs are carried out in the Brockman and the Ellen Brook catchments so that over time we can track any improvement or deterioration in water quality. This work has helped define the Ellen Brook as the carrier, to the Swan River, of the largest amount of dissolved nutrients which in turn are blamed, when other conditions are right, for the development of algal blooms and associated fish deaths.

As a consequence we have seen the establishment of a huge “nutrient intervention” site in the Ellen Brook valley just north of the bridge on West Swan Road. Next winter we are expecting to see a significant reduction in the amount of nutrients moving down to the Swan River, however the Minister (for Parks and Wildlife) admits that a series of these big ticket sites may have to be installed downstream to bring down the nutrient load to acceptable target levels.

Looking forward to continuing State government funding being available for the additional sites so hopefully we will no longer have to endure the notorious reputation of being the biggest polluter of the Swan River.

Our thanks are due to all our staff and volunteers who, in conjunction with staff from the Swan River Trust, have worked long and hard to establish this first site.

Regards,
Robert Hawes
Chairperson



Ellen Brockman Integrated Catchment Group:

Back Row: Ann Graham, Sandy Pate, Reg Beale, Kate Bushby, Grant McKinnon, Norm Wallace

Front Row: Rosanna Hindmarsh, Robert Hawes, Judith Beer.

Committee Members:

Chairperson	Robert Hawes
Vice Chair	Judith Beer
Treasurer	Norm Wallace
Representatives:	
Chittering Landcare Group	Ann Graham
Shire of Chittering	Cr Doreen Mackie
Swan River Trust	Kate Bushby
City of Swan	Grant McKinnon
Tronox	Christine Bean
Dept. of Parks & Wildlife	Robert Huston
Shire of Gingin	Cr Sandra Smiles
Community Member	Reg Beale
Community Member	David Charles

Community Groups

Ellen Brook Integrated Catchment Group

Funding Body	Project	Activities	Comments	Value \$
State NRM	Feral Animal Control	Fox & Pig Control		46900
SALP	Pearce South	14000 Seedlings Planted	Planted by Fly Boys	19785
SALP	Payne St Reserve	Weed Control		1760
SALP	Rakela	3000 Seedlings Planted		3945
SALP	Renton	3000 Seedlings Planted		4500
Swan River Trust	Bridle Trail	4000 Seedlings Planted	River Ranger Program	5630
Swan River Trust	Brand Highway	Weed Control, Monitoring		2020
Swan River Trust	Bingham	Weed Control, Monitoring		2400
Swan River Trust	Muchea Drain	Weed Control, Monitoring		2850
Swan River Trust	Water Quality Improvement Plan	25000 seedlings, 7km fencing		75000
EBICG	Water Quality Monitoring	Monitoring of 26 sites in Ellen Brook		15000
Swan River Trust	Coordination of Community Projects	WQ Monitoring, Community Capacity, Workshops		115000
Swan River Trust	Ellen Brook Wetland	45,000 seedlings		132000
Shire of Gingin	Weeds in Gingin Brook	Weed control		10000
Perth Region NRM	Sustainable Agriculture/Corridors Project	Pastures, Firewood & Connecting corridors	ongoing	70000
			TOTAL	506800





Community Groups

Chittering Landcare Group

Chairperson	Ann Graham
Treasurer/Secretary	Rosanna Hindmarsh
Representatives:	
Shire of Chittering	Robert Hawes
Community Member	Phil Humphry
Community Member	Doreen Mackie
Community Member	Alex Mackie
Community Member	Ronda Vincent
Community Member	Graham Vincent
WAFF	Laurie Bush
WAFF	Phillip Sirtees

Above right: Graham and Ronda Vincent, Chittering Landcare Group members.

Right: Alex Mackie and Cr Doreen Mackie, Chittering Landcare Group meeting celebration.



Words from the Chairperson:

It has been a privilege to Chair Chittering Valley Land Conservation District Committee for yet another year. The team work together very well with one aim - improvement of the environment in our area.

As can be seen from this report activities have included, preparing grant applications, tree planting, advising the Shire of Chittering on proposed developments, water monitoring, weed identification, pursuing funding for eradication of feral animals (particularly pigs), advice to local landholders, bird monitoring (especially the endangered Carnaby's Black-Cockatoo) and much more.

It has been a busy year and I'm sure the next one will be similar, but the team is dedicated and continues to be enthusiastic in its role as Natural Resource Management officers in a very diverse area of our environment.

My regards to everyone and a special thanks to all the volunteers who give freely of their time to make sure the thousands of trees get planted throughout the area.

Regards
Ann Graham
Chair - Chittering Land Care

Community Groups

Chittering Landcare Group

Funding Body	Project	Activities	Comments	Value \$
SALP	Starkey	5000 seedlings	Planted themselves in one weekend!	9034
SALP	Humphry	6500 seedlings, 1km fencing	Organic farmer	14604
SALP	Barracca NR	1km Fencing	Prevent spread of dieback	2000
Shire of Chittering	Sussex Bend	Stream Remodelling, dam clean, weed control		12700
State NRM	Cramer	4000 Seedlings	Planted themselves	4500
Contract	Chittering Reserves	Weed Control	At Barracca Springs (LOT 209)	714
Contract	Cooke	5000 Seedlings	Along Tooday Creek	5022
Contract	BBBC	Flora Survey		5000
Contract	Catalano	3000 Seedlings planted	Gidgegannup	8000
TOTAL				61574



Top left: Rosa Park Planting
 Top right: Lake Chittering
 Bottom left: SALP Breakfast 2014
 Bottom right: *Drosera macrantha* from Blackboy Ridge



Community Groups

Bullsbrook Landcare Group



COMMITTEE 2014

Chairperson	Judith Beer
Vice Chair	Richard Janes
Secretary	Secretary
Treasurer	Ann Sibbel

Community Group	Funding Body	Project	Activities	Comments	Value \$
BLG	SALP	BBBC Stage 6	13000 Seedlings Planted	Planted by St Marys students	19910
BLG	SALP	Blackberry	Weed Control	West Bullsbrook area	4950
BLG	SALP	Bridle Trail	2500 Rushes and sedges		4050
BLG	SALP	BBBC	Weed Control		3300
BLG	State NRM	School Bushland	Dieback Mapping, 1.5km Fencing, 500seedlings	Planted by Bullsbrook DHS Students	8500
Total					40710

Words from the Chairperson:

Firstly thank you to all our members for your input and support for our Landcare Group during 2014. Over the twelve months members have:

- Supported local sporting group with a Landcare Information stall
- Held an information and plant give away morning
- Supported students from Bullsbrook College to attend a tree planting activity day at Whiteman Park
- Joined Perth NRM at the Karragullen Expo
- Contributed native plants to the Bullsbrook Museum
- Attended Tronox planting day
- Assisted tree planting at Bullsbrook College—our landcare group has formed a partnership with the College to protect, restore and preserve their bushland reserve.
- Attended a meeting with Mr John Holley—State NRM.

We have also written submissions commenting on:

- The Bullsbrook Townsite Landuse Master Plan
- The Bullsbrook Industrial Area
- The National Landcare Program

Articles were also sent to our local newspapers:

- Our Landcare Group—its work and objectives
- Environmental activities at Bullsbrook College

A special letter of thanks was sent to Mr Peter Gell for all his work and support for Landcare in the area over many years. We have continued to invite guest speakers including:

- Mr Lindsay Strange—(DAFWA) - RGB's
- Mr Sandy Pate—Perth NRM
- Mrs Sue Metcalf—Chittering Landcare Centre

Special thanks to Bonny Dunlop—our Natural Resource Officer for the Bullsbrook area, for all her support, expertise and success, not only in grant applications, but her many on ground works. Thank you!

For our group—a very special thanks to Anne Janes—our secretary and Anne Sibbel—our Treasurer. Their valued work ensures our group runs smoothly and successfully. On behalf of the group—a sincere thank you.

Objectives for the next twelve months at least is to ensure our Landcare presence in the community is 'visible' through continued articles and photos in our local newspapers and at the shopping centre. With big changes to the Bullsbrook townsite area and surrounds, it is important for the environment that we continue to monitor and make comment on all these changes and plans.

Thanks to everyone.

Regards,
Judith Beer
Chairperson



Community Groups

Wannamal Lake Catchment Group



Left: Nigel Todd presenting Perth NRM's project investigating nitrous oxide emissions in horticulture.

Below: Sabrina Hahn at the Wannamal Sundowner

Chairperson	Shayne Smith
Vice Chair	Robert Anspach
Treasurer	Rosanna Hindmarsh
Secretary	Megan O'Grady
Executive Committee	Keith Cunningham
Executive Committee	Robert Hawes



Words from the Group:

The Wannamal Lake Catchment Group has had a quiet few years, but continues to hold their Annual General Meeting so we can respond to issues when they arise. The Wannamal Group held two events this year; the Soils Workshop and the Wannamal Sundowner. The Soils Seminar boasted fantastic presenters; Nigel Todd from Perth Region NRM, Prof Lyn Abbott from UWA, & Fran Hoyle from DAFWA. After lunch Wannamal members and locals discussed ideas for the future which led to the organisation of the Wannamal Sundowner in October.

There was an amazing attendance with over 35 people, with Sabrina Hahn as the main attraction giving a speech after dinner. Jan Bant from the Friends of the Western Swamp Tortoise gave a presentation as well as Sue Metcalf, presenting information on the feral animal program. We have made two application on behalf on the Wannamal Group, fingers crossed we are successful!

Megan O'Grady
Secretary

Rehabilitation– Case Study



Renton - A long term rehabilitation project

Renton's project is located in the Brockman River Catchment and is part of a longterm revegetation plan for this landholder; Ron Renton. Stage 5 of the revegetation of a degraded creekline that is excluded from stock was completed in 2014. There will be approximately 3000 seedlings planted in 2015 with plans to continue to extend the project in future years, planting over 50,000 seedlings himself in that time. Ron has learnt what works for his property and what does not, and has applied that learning to create an ongoing successful project which represents good value for money. On top of planting the seedlings himself, Ron also fences off the revegetation to deter kangaroos from predating the seedlings.

STATISTICS

- Over 30,000 seedlings planted
- 10+ years involvement in landcare
- Approx 4 hectares rehabilitated
- Another 3 hectares to go!

Future plans include removing a recent invasion of spiny rush in the creekline and replacing this with native rushes and sedges to improve bank stabilisation and create habitat.



Rehabilitation— Case Study

Bulls Brook Biodiversity Corridor—Stage 6



STATISTICS

- 12000 seedlings planted in Stage 6 in 2014
- Biodiversity Corridor going for 16 years!
- Second attempt at revegetation after fire in 2006
- We are half way through this stage

The Bulls Brook Biodiversity Corridor has been a successful ongoing restoration project for the North Swan Landcare Group since 1998. The project is located in the Bulls Brook subcatchment which has been identified as a priority catchment for nutrient export into the Ellen Brook. Stage 6 was originally revegetated in 2004 & 2005. Initially the revegetation was very successful, but it was burnt out by a fire which caused 70% of the vegetation to be lost. In 2012 a plan was put together to revegetate the area once again. We received funds from SALP in 2012 to carry out extensive weed control on the area in preparation for the revegetation in 2014. The revegetation in 2014 involved planting 12000 seedlings along the waterway with a large focus on understorey and rushes and sedges. The plan for this site is for it to be completely revegetated in multiple stages. Continued weed control will ensure a high success of seedling survival.



Tractor Man Brett Walton mulching weed matter after successful spraying management .



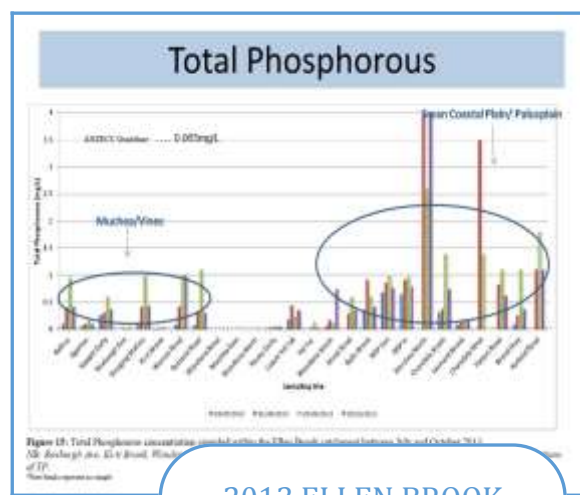
St Mary's student planting the 12,000 seedlings

Water Quality Monitoring

The Landcare Officers take samples from various locations in the Ellen Brook Catchment four times a year, and twice a year in the Brockman Catchment to provide a snapshot of their water quality. These results are from 2013 and are used to identify trends, and prioritise subcatchments for nutrient transport and salinity.

Ellen Brook Catchment

- All western sub-catchment sampling sites had high total nitrogen, total phosphorous and filterable reactive phosphorous concentrations which were above ANZECC trigger values. Muchea North was identified as the highest contributor of these nutrients to the Ellen Brook.
- Wandena North and Muchea East sites had acidic pH levels far below the guidelines, and were identified as contributors of metals to the Ellen Brook.
- There is increasing evidence that salinisation is becoming an issue in the Ellen Brook Catchment.



2013 ELLEN BROOK

The graph shows the higher phosphorus levels in the Western subcatchments, which are on different soils to the rest of the catchment. The nutrients travel through the sandy soils very quickly.

Brockman Catchment

- 26 sites were sampled across the 1520 m² catchment.
- Clearing at the top of the catchment has led to high EC (salinity) readings, and decreases along the main body of river. Many freshwater streams are now in the brackish range.
- pH levels were predominately within ANZECC guidelines.
- Higher than usual concentrations of Total Nitrogen were observed than in previous years.
- Heavy Metals were generally under the guideline, apart from Aluminium and Iron.



2013 BROCKMAN

All seven sites sampled for Aluminum were over the ANZECC guideline on the August sampling occasion, and were consistently exceeding the guideline for Iron levels as well.

Dieback - *Phytophthora cinnamomi*

Phytophthora cinnamomi is threatening the biodiversity of the south west of Western Australia and the Ellen Brockman Sub region. Many of our reserves contain susceptible vegetation and were visibly under threat. Since 2010 we have been actively obtaining funding to map and treat our local bushland reserves.

Other dieback funding received this year included mapping of 40 hectares of banksia woodland in Bullsbrook on private property. This landholder is very keen to protect and manage her bushland and due to the size of the property it provides a stepping stone of protected bushland in that area that is under threat.

Applications for funding have been made for retreatment of reserves in 2015. We are optimistic that there will be suitable funding streams in order for us to get this done.



WE STOPPED THE SPREAD!

In 2014 we were successful in getting funding for the retreatment of Bullsbrook nature reserve. Phosphite treatment only protects trees that are stem injected for 3-5 years and foliar spray is only 2-3 years, therefore retreatment every 3 years is recommended in order to stop the spread. In this case the area was remapped by Glen Tuffnell during the retreatment and it was determined that there had been no movement of the disease edge in the reserve. This is a huge win for us as it is confirmation that all the hard work that we have put into that reserve has had the best possible outcome.

Where has the Work happened?

- Bullsbrook Nature Reserve
- Mooliabeenie Reserve
- Evergreen Reserve
- Pioneer Reserve
- Hidden Gully
- Bell Hill
- Spoonbill Drive
- Barracca Springs Reserve
- Heron Hill
- Blackboy Ridge
- Chequers Golf Club
- Chequers Bushland
- Smith Chittering Reserve
- Ghost Gum
- Payne St Reserve

Pest Animal Management



N. Metcalf

A very successful program funded by the Western Australian Government through the State NRM Office removed 127 feral pigs from the Chittering Valley in 2013/14. This follows the capture of 134 pigs in 2012/13 and has reduced the impact of the animals on orchards, farms and bushland areas. Many thanks to our intrepid trappers, Andy, Wilko and Noel.

Fox control has been implemented in areas around Wannamal and Gingin with successful Red Card for Red Fox weekends followed by baiting with 1080 meat baits. Thanks go to the Gingin crew and their leader Gary Harley. Efforts to reduce feral cat numbers across Australia will increase over the next few years with the Australian Government reacting to pressure by environmental groups “to do something” to prevent the deaths of over 20 million native Australian mammals, birds and insects each year. The Chittering Landcare Centre has been instrumental in beginning action in our area with traps being set in conjunction with the Shire Ranger at known infested sites such as the rubbish tips at Muchea and Bindoon. In accordance with the new Cat Act all cats are checked for microchips and ownership. A new bait called Curiosity is being developed which will make control of this predator much easier



A Lockey

Trapping for feral cats at the landcare centre yielded some unexpected results with young and silly foxes entering traps meant for mean old pussycats.



A. Lockey

The Feral Animal Program was awarded a Certificate of Excellence which was presented at the 16th Australasian Vertebrate Pest Conference in Brisbane. This award gave exposure to the activities in Western Australia and more particularly our Landcare Centre. The conference showcases research being conducted throughout Australia and New Zealand on feral animal control. With damage caused by feral animals in Australia costing the economy in excess of \$720 million per year control of these pests is a high priority and any tools developed by researchers is welcomed by practitioners.

The Chittering Landcare Centre will strive to update the community with all aspects of Invasive Species Control and will conduct a workshop focusing on Vertebrate Pests in March 2015. Now we just have to make sure that the only cane toads in South Western Australia look like the ones here —>



Reserve Management

Weed control undertaken in Barracca Springs Reserve included Capeweed in the area revegetated in 2013 and cottonbush at the south end of the reserve. Some additional planting was undertaken in the area revegetated in 2013. This was Haemodorum which was unable to be planted in 2013 as the plants were too small at that time. Weed control in Payne Reserve focussed on Arum Lily around the wetland and veldt grass and freesias near the Fraser Close entry.

The plants from the 2012 and 2013 revegetation program at Carty Reserve have fared very well and several species from the 2012 planting season flowered this year. Some native grasses from the area earmarked for car parking were successfully transplanted into the revegetation area near the dam. The walk trail constructed by the Shire of Chittering was completed and now connects the parking area to the revegetation areas.

An interpretive sign was installed at Blackboy Ridge at the start of the lookout walk trail to tie in with trail signage installed by the Shire of Chittering as part of its trails network program. The sign was well liked by the attendees at the

Bushcare's Major Day Out event in September who also pulled many bags of weeds in the reserve on the day.

The Shire of Chittering had an assessment of the fire risk in its bush reserves carried out and a report detailing recommended mitigation measures produced. The Landcare Centre commented and recommended some changes (not all of which were accepted) and later met with Jamie O'Neill and the appointed contractor to discuss the implementation of this year's program. This targeted areas close to Muchea and to the rural residential estates and included, in some cases, hazard reduction burns.

Despite the Landcare Centre bringing the Shire of Chittering and Department of Parks and Wildlife together to consult on several reserves in Muchea where threatened species or communities occurred, works did not go smoothly in some cases particularly in a drainage reserve containing Declared Rare Flora adjoining the Muchea Nature Reserve. The community were not entirely happy with how the works have been carried out. Consultation will continue in the future.



Top left: Blackboy ridge sign

Top right: Tim Lynn-Robinson at Blackboy Ridge

Bottom left: Carty Reserve Sign

Bottom right: Carty Reserve 2012 Planting



Landcare Centre Works

The Bonsanna Stud resides at the Landcare Centre. The flock is made up of 8 Cheviot ewes, two Cheviot rams, and currently 8 lambs. The Cheviot is a heritage breed and is known for its high twinning rate, producing quality carcasses and though it does need to be shorn they are generally low maintenance. The flock is used to demonstrate rotation grazing, and to display at events, this year they even went to the Perth Royal Show!



LANDCARE'S CHEVIOT SHEEP



CLOVER PASTURE AT
LANDCARE CENTRE

There are seven paddocks at Landcare that are used for pasture demonstration. This year's clovers in a newly fenced off paddock looked fantastic. We also have a perennial pasture paddock and a native grass pasture paddock. The clovers were put in by officers with the centre's quad bike and tow behind spreader. We also sprayed for red-legged earth mite, which helped their success. We attempted to put in 4 acres to oats for hay, but the soils were too wet.

Landcare leases 25 hectares from TRONOX, and over the years, have rehabilitated sections of Rocky Creek which runs through the property. This year, Tronox held their community day here and planted close to 3000 seedlings. Guildford Grammar also planted 1500 seedlings near the artificial wetland. Next year we plan to fence this off, to prevent predation from kangaroos, and continue planting.

REVEGETATION OF ROCKY CREEK AT
LANDCARE CENTRE



Programs

Workshops

2014 Workshop Dates

Fencing Workshop
Sat 22nd Feb 9-2pm

Soils Forum
Friday 21st March 9-2pm

Carnaby Information Night
Friday 28th March

Pastures – Back to Basics
Sat 24th May 9-1pm

Birds, Wildflowers & Snakes
Saturday 6th Sept 7am-1pm

Night Stalk
Wed 1st October 6-8.30

Animal Husbandry
Sat 11th October 9-2pm

Wannamal Sundowner
Tues 21st Oct 5-9pm

\$5 Workshop fee
Members are FREE
Lunch or Dinner provided
PLEASE RSVP



Animal Husbandry Workshop
- Marking & Tailing Lambs



Wannamal Sundowner
- Sabrina Hahn



Fencing Workshop
- Phil Humphry



Birds/Wildflowers/Snakes
Black Headed Python



Night Stalk
Echidna



Soils Forum
Nigel Todd

Community Engagement

Community Tree Planting Days!

Fly Boys Planting Day
at Pearce Air Base



The annual Fly Boys planting day was held on base this year, at the Pearce South site near Butternab Rd, Bullsbrook. The seedlings from last year look fantastic and have had a great success rate. Unfortunately the Scouts were unable to join us this year, but the Singaporean Trainee Pilots still planted 10,000 seedlings before lunch!

Tronox Planting Day at
Landcare Reveg Site



Tronox Planting Day at
Landcare Reveg Site

2014 Backpacker Team



Tronox held a corporate planting day for their staff and families on the 5th of July at a revegetation site at the Chittering Landcare Centre. The sun shined while over 100 people and their children planted and guarded nearly 3000 seedlings, and enjoyed a BBQ lunch afterwards.

Community Events

Once again the Chittering Landcare Officers set up the named specimens for the wildflower display in the newly renovated Bindoon Hall. The Hall is now very light and bright and the display looked amazing. We tried to introduce some hands on activity by providing our microscope and samples of trigger plants and sundews for people to have a close look at the plant structure. The weed display again captured considerable attention as many people did not realise the plants they have in their garden are actually garden thugs that spread throughout the bush. A great learning experience.



Programs

School Engagement

The Chittering Landcare Centre have a special partnership with St Mary's Anglican College. Every year their Year 10 class come out twice for their community service program. On the 1st of July this year, over 100 St Mary's students reinforced their outstanding reputation for being fantastic workers and planted over 10,000 seedlings at Bulls Brook Biodiversity Corridor Stage 6.



St Marys students



Guildford Grammar students

Ten students from Guildford Grammar came out to plant on the 8th of August this year. Every year, teacher Chris Durrant grows seedlings as an individual contribution, and brings students up to plant at one of our sites. This year the group planted 2000 seedlings at our own wetland at the Landcare Centre.

The weather rolled in on the 2nd of July, and only 40 of the 120 River Rangers students were able to stay to plant 4000 seedlings at the Bridle Trail site in Bullsbrook. We were extremely impressed at the determination of the Ellen Brook Christian College students (and teachers!) who continued to plant even when their gumboots were overflowing!



River Ranger students



St Marys students

The St Marys students came out for their second community service day on the 10th of September and their task was to pull cape tulip from the creekline near the Landcare Centre. We divide the girls into their factions and they compete to see who can pull the biggest pile of weeds on the day. We provide the girls with a BBQ lunch afterwards for their hard work.



Bullsbrook DHS students

On Friday the 12th of September, Bonny, the Bullsbrook Landcare Group and 15 Year Eleven biology students planted 500 plants in the Bullsbrook School Bushland in 45 minutes! Big thank you to Richard and Anne Janes and Wendy Claxon for helping organise the students. This was part of the State NRM project for that site which includes dieback mapping, fencing, small amount of revegetation and weed control.

Programs

War on Weeds

Cottonbush Campaign



Cottonbush has started to invade parts of our region in the last couple of years. The Landcare Centre has approached landholders with Cottonbush problems in an attempt to reduce the spread of this weed.

We have produced several brochures and flyers to educate people on how to eradicate it. These attempts to spread the word about this weed has been mostly successful.

Blackberry Blitz



Blackberry is a Weed of National Significance and is one of the major weeds in the West Bullsbrook area. For many years, the Chittering Landcare Centre has sourced funds to treat the invasive blackberry in our project sites. We have eradicated it from the Bulls Brook Biodiversity Corridor with annual spot spray of any fresh canes. This year, as well as keeping old patches under control, we have attacked a new area, in preparation for planting in 2016.



Programs

Chittering Bird Group

Nesting pair of Carnabys



Through rain, hail and sleet,
they never miss a beat.
For Judith and Ronda,
playing in the puddles is a treat!
- Julimar National Park



What's that you ask?
Birders at Lake Beermullah



Sharing lunch at Blackboy Ridge



Christmas by Lake Chittering



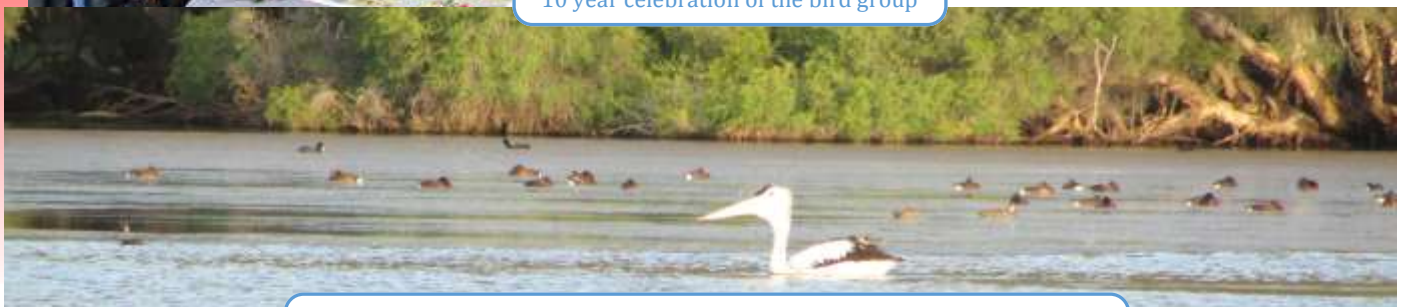
10 year celebration of the bird group

This year the Chittering Bird Group celebrated ten years of bird monitoring. Each month birders gather at a reserve no matter what the weather. At least ten members of the group turn up on the day ready to look for birds and enjoy each other's company in a lovely part of the countryside. For the past 5 years the group has not cancelled a birding day. That is dedication! Each month we record between 24 and 38 species of bird depending on the time of year and place.

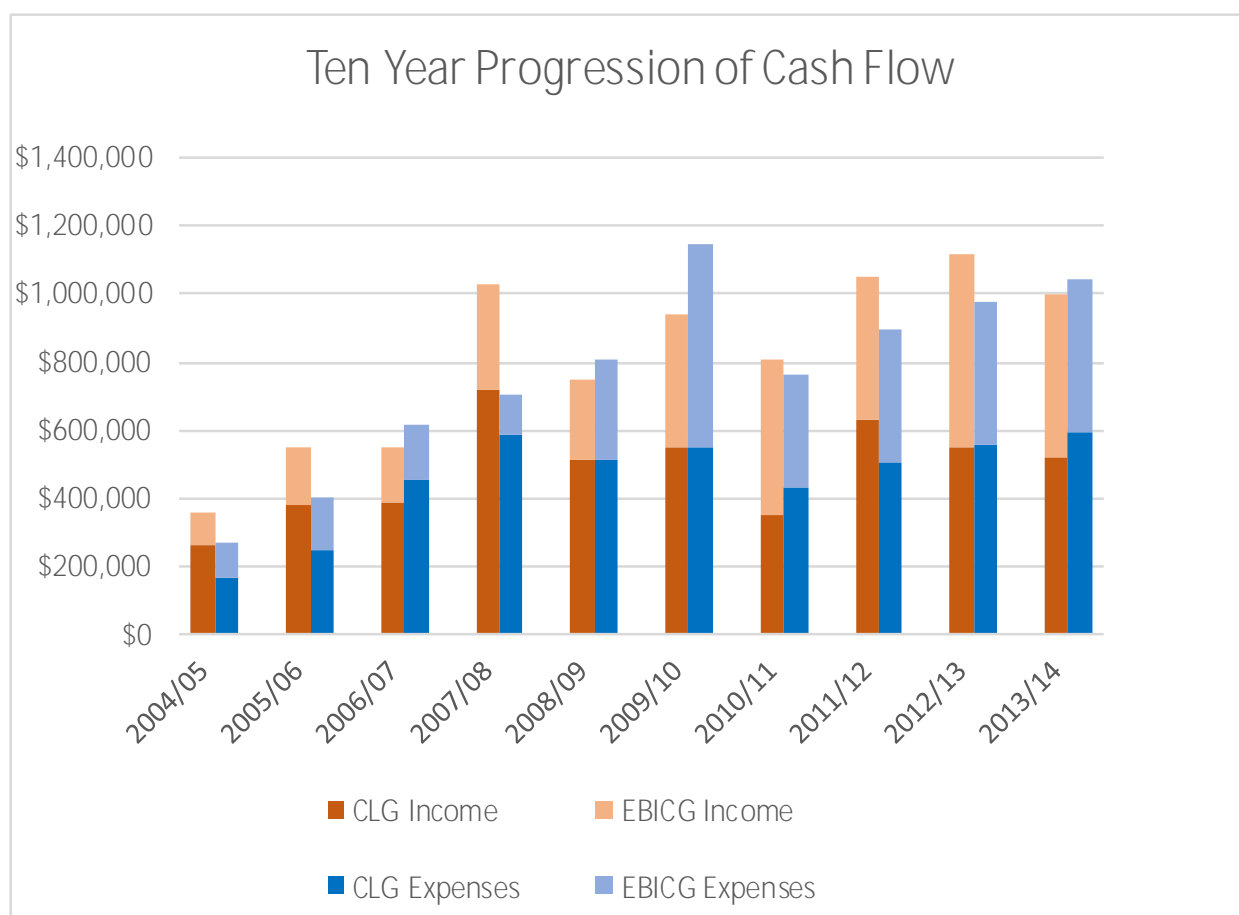
This year we welcomed several new members to the group including two who are new to Chittering.

Sue Pedrick continues to do the monthly Cockatoo count at the Granville Park, Gingin roost site. We have almost five years of information about the movement of these birds from the coast to their nesting sites. This year we found another three nesting trees in Chittering and Wannamal which we recorded and photographed. Many community people sent in photographs of Carnaby's cockatoos, where they were feeding and on which plants they were foraging. All these sightings are an important source of information that helps us build up a good picture of the bird's status in our area.

We are all looking forward to another exciting year of bird watching and cockatoo counting.



The peaceful sight of hard heads, grey teal and pelicans on Lake Chittering



Ten Year Progression of Actual Cashflow

- EBICG and Chittering Landcare Group work together under a Memorandum of Understanding to operate the Chittering Landcare Centre and manage staff. Their Annual Income and expenses are shown above combined to more accurately show the cash flow of the Landcare Centre.
- Previous to 2006/07, the payment of Landcare Centre's staff was hosted through the Shire of Chittering and Executive Officer was hosted by through the Waters & Rivers Commission. This changed in the 2006/07 financial year when there was a transition of staff management to the Chittering Landcare Group. Income was sought for staff to provide environmental services from a variety of sources, which continues today.
- The 2013/14 combine income was similar to the previous three years, but the combined expenses has gradually increased. This may show that we need to find additional sources of income to deliver the same extent of services we currently offer.
- Please see the attached Appendix for the financial statements for the Chittering Landcare Group and Ellen Brockman Integrated Catchment Group. These include the auditors report, balance sheet, profit and loss statement, and cash flow statement.**

2015 Project Applications



Project	Funding Body	Activities	Confirmed?
Fauna Survey Barracca Springs	State NRM	Reptiles, Birds, Bats, and Frogs	No
Ellen Brook Wetland	Swan River Trust	Infill	Yes
BBBC Stage 6	Swan River Trust	30,000 seedlings	Yes
Landcare Wetland	SALP	10000 seedlings	Yes
Rakela	SALP	4000 seedlings	Yes
Breera Rd	SALP	800 seedlings	Yes



Project	Funding Body	Activities	Confirmed?
Cramers reveg	20 Million Trees	30,000 in 2016	No
Cramers fencing	25th Anniversary Grants	Fencing	No
Feral Animals	State NRM	Feral pig control and collar trapping	No
Humphry	SALP	10000 seedlings	Yes
Renton	SALP	5000 seedlings	Yes



Project	Funding Body	Activities	Confirmed?
Blackberry Control	SALP	Blackberry Control	Yes
Bridle Trail	SALP	Infill	Yes
Sibbel Stage 4	SALP	Infill	Yes



Project	Funding Body	Activities	Confirmed?
Sadlers	20 Million Trees	30,000 in 2016	No
Spiny Rush Blitz	Wannamal Lake CG	Search & Destroy	Yes