

Vision

- To help the Ellen Brook Catchment Group and Swan River Trust revegetate the Ellen Brook.
- To learn about the animals that live in this area.
- Have an interest in what happens from Upper Swan to Swan River.
- To help protect the Bush Forever Sites.
- To protect the Egerton mound and associated water courses.
- To protect and learn about the Belhus historic precinct.



Register your interest in joining the Friends of Lower Ellen Brook.

Phone or email the Chittering Landcare Centre on 9571 0400 or chitteringlandcare@iinet.net.au to go on our mailing list.

It's free!!

Activities you could become involved in include;

- Community tree planting days
- General maintenance days including rubbish collection and weeding
- Learning about issues facing the Belhus community
- Discovering the Belhus historic precinct.

You will be entitled to;

- Access of a wide range of environmental educational resources at the Landcare Centre
- Receiving our *Envirowise* newsletter
- Receiving regular updates on what activities are being held at Belhus Reserve



Friends of Lower Ellen's Brook



Belhus Reserve

Belhus is a beautiful reserve, providing a haven for wildlife. The reserve has changed from a barren and degraded landscape, to a living, breathing ecosystem. Birds have returned to the area in droves.

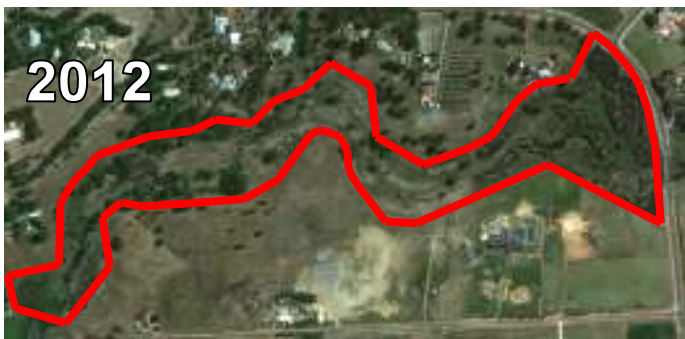




Background to Friends of Lower Ellen's Brook:

Concerned members of the community saw the degradation of the Ellen Brook along Belhus Reserve, and formed the Friend's of Lower Ellen's Brook in 2003.

Operating under the umbrella of the Ellen Brockman Integrated Catchment Group, the group tackles issues facing the Belhus community.



Background to Belhus Reserve



- Created in the 1980s, as a section 20A under the Town Planning Act of Western Australia, as a result of the subdivision of adjacent farmland.
- Reserved for Public Recreation it is vested in the Department of Land Administration and managed by the Ellen Brockman Integrated Catchment Group (EBICG).

- Belhus is 14.5 hectares of foreshore and riparian reserve along the Ellen Brook.
- Since 2004, EBICG has assisted the Friends of Lower Ellen Brook, and the Belhus community to revegetate the foreshore with local, native species.
- The aim of this is to improve the biodiversity values of the area and to provide a buffer to the Brook to improve water quality.
- The reserve also has historical value of both European and Aboriginal Heritage.

Activities Undertaken:

- Over 60,000 trees Planted
- Weed mapping
- Weed control
- Fire breaks installed
- Water Quality Sampling and Analysis
- Developed and implemented a Management Plan



Proposed Activities:

- Bird Walks
- Frog Walks
- Night Stalks
- Educational Workshops

