

# **Brockman River Catchment**

## ***Water Quality Monitoring Snapshot***

### ***August and September 2017***



**Plate 1:** Westpoint Creek, Brockman River Catchment (2016).

**Prepared by the Ellen Brockman Integrated Catchment Group: March 2018**



**TRONOX**

This project is funded by Tronox on behalf of the Ellen Brockman Integrated Catchment Group.

## **1. Acknowledgements**

This report was prepared by the Ellen Brockman Integrated Catchment Group and was funded by Tronox.

Water samples and monitoring data was collected by officers from the Ellen Brockman Integrated Catchment Group.

For further information contact the Ellen Brockman Integrated Catchment Group at the Chittering Landcare Centre.

Chittering Landcare Centre  
PO Box 62  
Muchea WA 6501  
Phone: (08) 9571 0300  
Fax: (08) 9571 4350  
Email: [chitteringlandcare@iinet.net.au](mailto:chitteringlandcare@iinet.net.au)

## **2. Executive Summary**

The assessment of water quality within the Brockman River catchment was undertaken in August and September 2017 in compliance with the sampling and analysis plan (EBICG, 2014). The objective of the snapshot was to collect annual data on the water quality within the catchment, to identify trends and priority sub-catchments for nutrient transport and salinity.

Monitoring stream salinity throughout a catchment enables the isolation of areas where the discharge of saline groundwater to streams is greatest. This is important as increasing salinity is the dominant threat to the Brockman catchment. The findings of this report will be used to make recommendations for degraded sites, to identify the major nutrient and salinity contributing subcatchments, to mitigate, improve or maintain water quality, and to prevent detrimental environmental effects downstream.

The Brockman River catchment receives less than 1000mm of rain per annum and much of the salt is stored in the soil profile. Extensive clearing of vegetation for agriculture has reduced evapo-transpiration; increased recharge has resulted in rising groundwater levels, which mobilizes the stored salt. The salt laden groundwater then surfaces as hillside springs and valley floor seeps. Groundwater discharge causes soil salinity and contaminates previously potable water resources (Angell, 2000). Nutrients are not yet an issue in the Brockman catchment. The Brockman River is a contributor to the level of saline water entering the Upper Reaches of the Swan-Canning system and this could potentially alter and degrade ecological environments. Sediment and nutrients bound to particles are carried downstream and add to sediments in the Swan River. Under anoxic conditions these nutrients bound in the sediments are released, causing algal blooms and fish deaths.

It must be noted that this assessment is based on one-off grab sampling of water quality on two separate occasions in August and September 2017 to capture winter and spring flow, from 26 selected sites within the Brockman River catchment (shown in Figure 5). Consequently, the results represent the condition of the water in the catchment at the time of sampling only. All 26 sites were tested for physical parameters (pH, conductivity, temperature and total suspended solids) and nutrients

including total nitrogen, soluble organic nitrogen, nitrogen as ammonia, total oxidised nitrogen, total phosphorus and soluble reactive phosphorus. Nine out of the twenty-six sampling sites were strategically identified for the testing of heavy metals and water hardness.

In comparison to past water quality monitoring data collected by the Chittering Landcare Centre, pH values remain relatively stable at most sampling sites, and there is an overall trend of increasing salinity at most of the sampling sites since 1997. This is of great concern for the ecological health and function of the river and catchment. It is also of great concern to agriculture, industry and private landholders. If left unmanaged this could become a major issue for landholders in terms of agricultural production and water quality. Future monitoring will verify trends and patterns as more data is collected over a longer period of time. All data will be entered into the Department of Water's (DOW) Water Information Network (WIN) database.

### 2.1.1. **Key Findings**

- Sampling sites within the Brockman River catchment recorded similar concentrations of all forms of nitrogen as in previous years. However the following sites were identified through the 2017 snapshot as consistent contributors of nutrients to the Avon/Swan River and included Total Nitrogen, which were recorded at these sites with concentrations above the ANZECC guidelines (Table 1)

**Table 1. Sampling Locations where Total N exceeded ANZECC guidelines.**

| Sampling Site Name | Sampling Site Number |
|--------------------|----------------------|
| Jackson Rd         | BRN2                 |
| Romany Creek       | BRN7                 |
| Murphy Gully       | BRN1                 |
| Wootra             | BRN9                 |
| Udumung            | BRN5                 |
| Wannamal South     | BRN4                 |
| Longbridge Creek   | BRN8                 |
| Julimar Bridge     | BRN18                |
| Yallawirra         | BRN25                |
| Lake Chittering    | BRN15                |
| Yalliawirra        | BRN25                |

- Total Phosphorus concentrations in the Brockman catchment gradually increased since 2006, when there were no sites that recorded concentrations over the ANZECC guideline of 0.065mg/L for lowland river systems and ecosystem health. Yet in 2017, no sites were over the guideline
- Water Hardness was 'extremely hard' at all sites sampled metals except Marbling (BRN23) which was 'very hard' on one sampling occasion, and Spoonbill (BRN 13) which was 'hard'.
- Metal concentrations in the surface waters of the Brockman River Catchment were generally below the Hardness-modified trigger value (HMTV) and ANZECC guidelines on most sampling occasions. Yalliawarra (BRN25) and Grey Rd (BRN26) recorded concentrations above the guideline for Aluminium

on both occasions.. All other metals remained below the guidelines and limits of reporting (LOR).

- The Brockman River catchment recorded pH levels predominately within the ANZECC guidelines. Lake Rd (BRN 15) did record a pH of 8.36 on the October sampling occasion.
- Water was more saline at the top of the catchment and became less saline as it flowed southwards towards the Avon River.

**Table 2: Number of sites (out of a total of 26) equal to or exceeding the ANZECC water quality guidelines and trigger values.**

*Note: Heavy metals out of a total of eight sampling sites. Cadmium, chromium, copper, lead, nickel and zinc ANZECC water quality trigger values have been modified according to Water Hardness (Appendix D) and values must be equal to or exceed the Hardness-Modified Trigger Value to be over the Guideline.*

|                                | Number of Sampling Sites | Water Quality Trigger Value - Lowland Rivers |           | TSS - DOW Interim Guideline |           |
|--------------------------------|--------------------------|--|-----------|-----------------------------|-----------|
| <i>Physical</i>                |                          | August                                       | September | August                      | September |
| pH                             | 26                       | 6  | 12        |                             |           |
| Conductivity                   | 26                       | 26   | 26        |                             |           |
| <i>Nutrients</i>               |                          |  |           |                             |           |
| Total Nitrogen                 | 26                       | 14   | 2         |                             |           |
| Total Oxidised Nitrogen        | 26                       | 12   | 7         |                             |           |
| Nitrogen as Ammonia            | 26                       | 0  | 0         |                             |           |
| Total Phosphorus               | 26                       | 0  | 0         |                             |           |
| Filterable Reactive Phosphorus | 26                       | 0  | 0         |                             |           |
| Total Suspended Solids         | 26                       |  |           | 7                           | 11        |

| <i>Metal</i> | Number of Sampling Sites | Hardness Modified Trigger Value (400) | Hardness Modified Trigger Value (210) | ANZECC Trigger Value (mg/L) | August | September |
|--------------|--------------------------|---------------------------------------|---------------------------------------|-----------------------------|--------|-----------|
| Aluminium    | 7                        |                                       |                                       | 0.055                       | 4      | 4         |
| Arsenic      | 7                        |                                       |                                       | 0.024                       | 0      | 0         |
| Cadmium      | 7                        | 0.002mg/L                             | 0.0011mg/L                            | 0.0002                      | 0      | 0         |
| Chromium     | 7                        | 0.0084mg/L                            | 0.005mg/L                             | 0.001                       | 0      | 0         |
| Copper       | 7                        | 0.0126mg/L                            | 0.0072mg/L                            | 0.0014                      | 0      | 1         |
| Iron         | 7                        |                                       |                                       | 0.3                         | 6      | 7         |
| Nickel       | 7                        | 0.099mg/L                             | 0.057mg/L                             | 0.011                       | 0      | 0         |
| Mercury      | 7                        |                                       |                                       | 0.0006                      | 0      | 0         |
| Lead         | 7                        | 0.09mg/L                              | 0.04mg/L                              | 0.0034                      | 0      | 0         |
| Zinc         | 7                        | 0.072mg/L                             | 0.0416mg/L                            | 0.008                       | 0      | 1         |

**Key**

|    |  |
|----|--|
| 12 | Number of sites (out of a total of 26) equal to or exceeding guidelines or trigger value |
| 0  | All sites less than guideline or trigger value   |
| -  | No guideline or trigger value available  |
|    | Sample not analysed for parameter  |

### 3. Table of Contents

|  |           |
|--|-----------|
| <b>1. ACKNOWLEDGEMENTS.....</b>  | <b>2</b>  |
| <b>2. EXECUTIVE SUMMARY .....</b>  | <b>3</b>  |
| 2.1.1. KEY FINDINGS.....   | 5         |
| Table 2: Number of sites (out of a total of 26) equal to or exceeding the ANZECC water quality guidelines and trigger values. .... | 7         |
| <b>3. TABLE OF CONTENTS.....</b>   | <b>8</b>  |
| <b>3.1. LIST OF FIGURES .....</b>  | <b>10</b> |
| <b>4. BACKGROUND .....</b>   | <b>11</b> |
| <b>4.1. BROCKMAN RIVER CATCHMENT .....</b>   | <b>12</b> |
| 4.1.1. CLIMATE .....   | 15        |
| 4.1.2. GEOLOGY AND GEOMORPHOLOGY .....   | 16        |
| The Darling Plateau.....   | 16        |
| The Dandaragan Plateau.....  | 17        |
| 4.1.3. VEGETATION .....  | 18        |
| Table 3: Spatial extent of remnant vegetation in the Brockman River catchment (WRC, 2002). ....                                    | 18        |
| 4.1.4. LAND USE .....  | 19        |
| <b>5. METHODOLOGY.....</b>   | <b>21</b> |
| 5.1.1. SITE SELECTION .....  | 22        |
| Table 4: Location and description of selected sampling sites within the Brockman River catchment. ....                             | 23        |
| 5.1.2. WATER SAMPLING .....  | 25        |
| 5.1.3. WATER ANALYSIS .....  | 26        |
| <b>6. RESULTS AND DISCUSSION .....</b>   | <b>28</b> |
| 6.1.1. WATER QUALITY .....   | 29        |
| Flow and Rainfall.....   | 29        |
| 6.1.2. PHYSICAL PROPERTIES .....   | 32        |
| Temperature.....   | 32        |
| pH.....  | 32        |
| Electrical Conductivity.....   | 36        |
| Total Suspended Solids .....   | 41        |
| 6.1.3. NUTRIENT CONCENTRATIONS IN WATER.....   | 43        |
| Total Nitrogen.....  | 43        |
| Ammonia as Nitrogen.....   | 44        |
| Total Oxidised Nitrogen.....   | 44        |
| Total Phosphorus.....  | 49        |
| Table 5. Number of sites (out of 26) equal to or exceeding the ANZECC Total Phosphorus guideline for lowland rivers. ....          | 50        |
| Soluble Reactive Phosphorus.....   | 51        |
| 6.1.4. METALS IN SURFACE WATER .....   | 53        |
| Hardness .....   | 54        |
| Aluminium.....   | 57        |
| Iron.....  | 57        |
| Zinc .....   | 57        |
| Copper.....  | 57        |
| Nickel .....   | 58        |
| Other Metals .....   | 58        |



|   |           |
|---|-----------|
| <b>1. COMPARISON WITH PREVIOUS RESULTS .....</b>  | <b>64</b> |
| <i>Table 7: Sub catchment salinity measurement based on seven years of data between 2006 and 2015.....</i>  | <i>65</i> |
| <b>2. RECOMMENDATIONS .....</b>   | <b>66</b> |
| <b>3. REFERENCES .....</b>  | <b>68</b> |
| <b>APPENDIX A: WATER QUALITY RESULTS (RAW) .....</b>  | <b>74</b> |
| NUTRIENTS .....   | 76        |
| METALS.....   | 78        |
| <b>APPENDIX B – FRESHWATER TRIGGER VALUES AND GUIDELINES .....</b>  | <b>80</b> |
| 6.1.5. TRIGGER VALUES AND GUIDELINES FOR TOXICANTS (HEAVY METALS) IN FRESHWATER .....   | 81        |
| TRIGGER VALUES AND GUIDELINES FOR TOXICANTS (HEAVY METALS) IN FRESHWATER .....  | 82        |
| <b>APPENDIX C – SALINITY MEASUREMENTS AND TOLERANCE LIMITS .....</b>  | <b>83</b> |
| <b>APPENDIX D - HARDNESS-MODIFIED TRIGGER VALUE CALCULATIONS BASED ON VARYING<br/>WATER HARDNESS (TABLE 3.4.4. ANZECC &amp; ARMCANZ, 2000).....</b> | <b>84</b> |

### 3.1. List of Figures

|   |    |
|---|----|
| Figure 1: Catchments within the Swan-Canning Catchment (WRC, 2003). .....   | 13 |
| Figure 2: Brockman River Catchment (WRC, 2003). .....   | 14 |
| <b>Figure 3:</b> Total monthly rainfall within the Brockman River catchment recorded at Bindoon Station (009112), and Wannamal Station (009040), Bureau of Meteorology, 2017. ....  | 15 |
| <b>Figure 4:</b> Land use in the Brockman River Catchment. ....   | 20 |
| Figure 5: Sampling site locations within the Brockman River Catchment.....  | 24 |
| Figure 6: Water temperature of surface water within the Brockman River Catchment 2017. ....   | 34 |
| Figure 7: pH of surface water within the Brockman River catchment 2017. ....  | 35 |
| Figure 8: Electrical conductivity within the main body of the Brockman River, recorded at sampling sites Grey Road (BRN27), Lake Chittering (BRN15) Julimar/Chittering Bridge (BRN18), Moondyne (BRN24) and Yalliwirra (BRN25) in 2017..... | 38 |
| <b>Figure 9:</b> Conductivity in surface water within the Brockman River catchment 2017....   | 40 |
| Figure 10: Total Suspended Solids in surface water within the Brockman River catchment 2017.....  | 42 |
| Figure 11: Total Nitrogen in surface water within the Brockman River catchment 2017. ....   | 45 |
| Figure 12: Ammonia as NH <sub>4</sub> N concentrations in surface water within the Brockman River catchment 2017. ....  | 46 |
| Figure 15: Filterable Reactive Phosphorus concentrations in surface water within the Brockman River catchment 2017. ....  | 52 |
| Figure 16: Water Hardness sampled from surface waters within the Brockman River catchment 2017.....   | 56 |
| Figure 17: Aluminium concentrations in surface water within the Brockman River catchment 2017.....  | 59 |
| Figure 18: Iron concentrations in surface water within the Brockman River Catchment 2017. ....  | 60 |
| Figure 19: Zinc concentrations in surface water within the Brockman River catchment 2017. ....  | 61 |
| Figure 20: Copper concentrations in surface water within the Brockman River catchment 2017. ....  | 62 |
| Figure 21: Nickel concentrations in surface water within the Brockman River catchment 2017. ....  | 63 |

## **4. Background**

The Brockman River catchment stretches across 1520 square kilometres and is the largest catchment of the lower Avon and upper Swan catchments. The Brockman River is approximately 90 kilometres in length and flows through the Chittering Valley along the Darling Scarp. The main issues within the catchment include a deteriorating natural resource base due to widespread clearing of native vegetation and an increased economic pressure on agricultural land to be more productive. This has resulted in increased salinity, water logging, erosion, pest plants and animals, and affected waterways due to increased sedimentation and reduced surface and ground water quality (WRC, 2003).

In 1996 discussions in Northam between the Water and Rivers Commission Regional Services, Western Australian state government and local governments in the catchment, documented their requirements for natural resource management. Together with the Shire of Chittering it was decided that the water quality of the Brockman River and its catchment was a priority and developed a successful funding application through the Natural Heritage Trust Fund to prepare an integrated natural resource management plan for the Brockman River catchment (WRC, 2003).

In 2017 the Ellen Brockman Integrated Catchment Group (EBICG) conducted an assessment of the Brockman River catchment surface water quality on 24<sup>th</sup> August and 21<sup>st</sup> of September. The objective of the snapshot was to build upon the existing years of data and establish baseline data on the water quality within the catchment. By monitoring stream salinity throughout a catchment, areas where the discharge of saline groundwater to streams is identified can then be targeted for remediation efforts. This sampling program and associated water quality results will be registered and entered into the Department of Water's (DoW) Water Information Network (WIN) database.

#### **4.1. Brockman River Catchment**

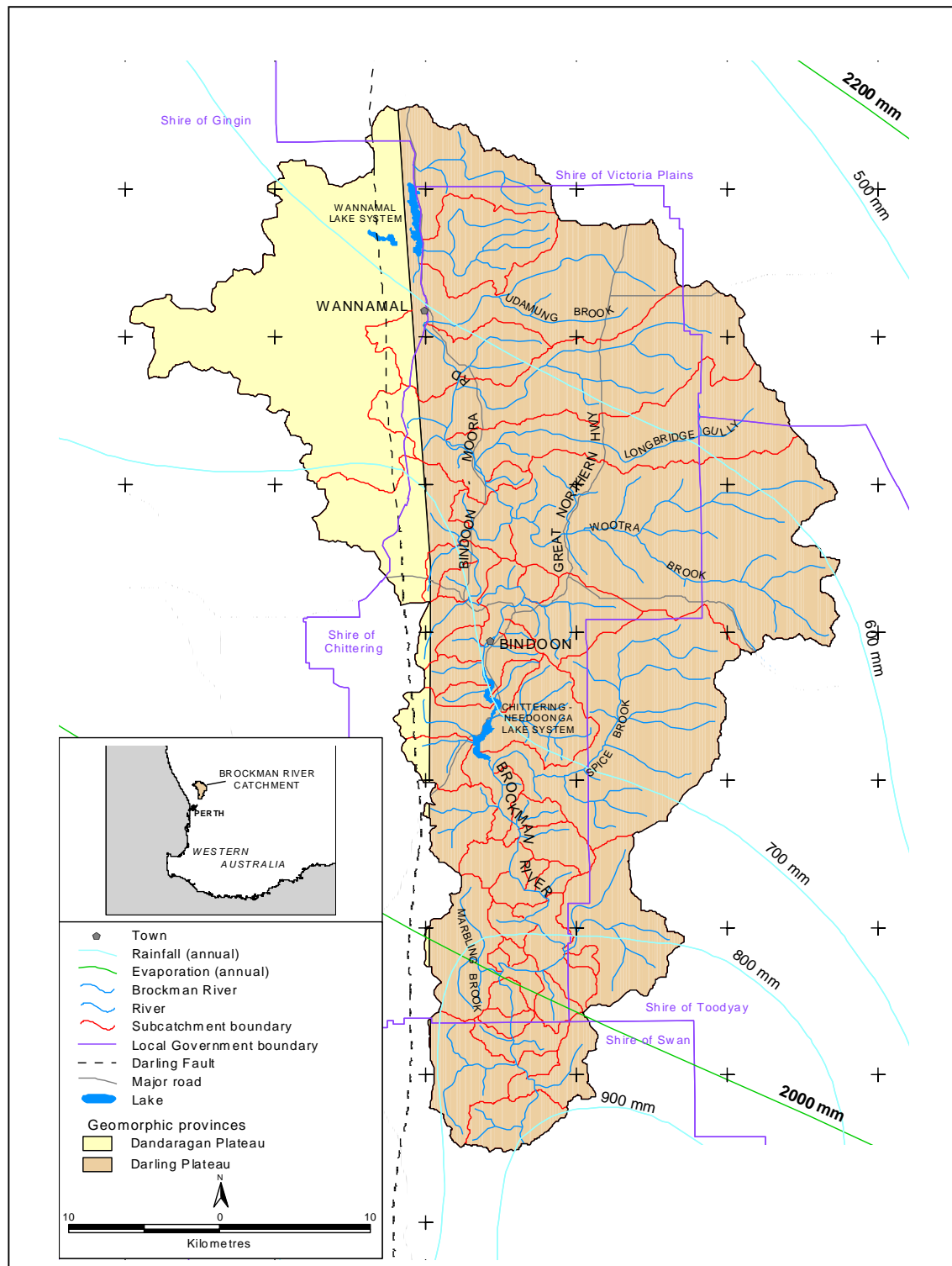
The Brockman River catchment is located to the north-east of the Perth Metropolitan area in the south-west of Western Australia (Figure 1). The catchment covers an area inclusive of sixty-eight sub catchments, incorporating the townships of Bindoon and Wannamal (WRC, 2002). The largest part of the catchment lies within the Shire of Chittering, with the remainder within the shires of Victoria Plains, Toodyay, Gingin and the City of Swan (Figure 2). Other localities within the catchment include Mooliabeenie, Lower Chittering, Maryville Downs and South Chittering.

While the Brockman River flows into the lower Avon River and is thus, part of the Avon River catchment, its greatest impact is on the Swan River and is therefore considered part of the Swan River catchment. The Brockman River itself follows the Darling Scarp, flowing through the deeply incised Chittering valley to enter the Swan-Avon River 40kms upstream from Perth (WRC, 2002).

The natural resource base of the catchment is deteriorating because of the widespread clearing of native vegetation and the increased economic pressure on agricultural land to be more productive. These impacts have resulted in increased salinity, water logging, soil erosion via wind and water, sedimentation, eutrophication, overgrazing, weed invasion and pest animals within the catchment. These cumulative impacts have an offsite effect on the Brockman River and local wetland systems, and ultimately the Avon-Swan River.



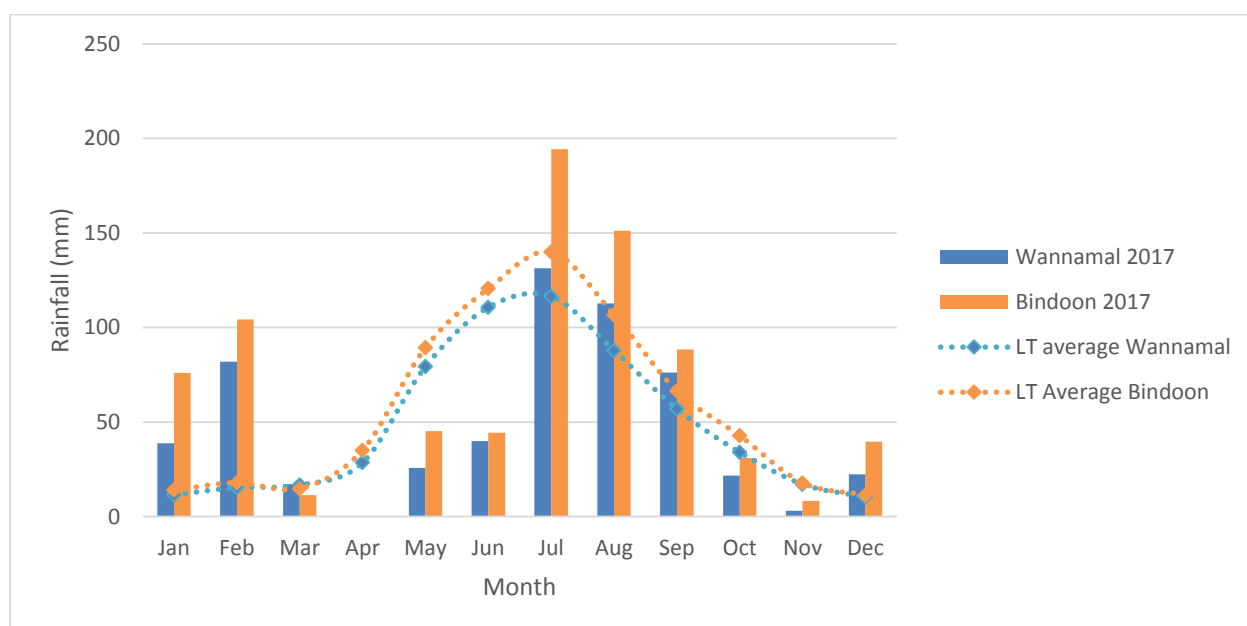
**Figure 1:** Catchments within the Swan-Canning Catchment (WRC, 2003).



**Figure 2:** Brockman River Catchment (WRC, 2003).

#### 4.1.1. *Climate*

The catchment experiences a typical Mediterranean climate of hot dry summers and cool wet winters. Average rainfall for the southern portion is 800mm/yr decreasing to less than 600mm/yr in the northern regions (Bureau of Meteorology, 1998). Above average rainfall occurred in both late Summer and late Winter 2017 (Figure 3). The annual rainfall that was received at Wannamal (Station 009040) was 571mm while at Bindoon (Station 009112) a total of 794mm fell (**Figure 3**). Rainfall at Bindoon was above the annual average (677mm) while rainfall at Wannamal was average.



**Figure 3:** Total monthly rainfall within the Brockman River catchment recorded at Bindoon Station (009112), and Wannamal Station (009040), Bureau of Meteorology, 2017.

Most water courses in the catchment flow during the winter months and have reduced or no flow during the summer months. Weather patterns typically have strong easterly to north-easterly winds in the morning and south-westerly in the afternoon during summer with thunderstorms and lightning common. During winter the winds come from the northwest to southwest (WRC, 2003).

#### **4.1.2.        *Geology and Geomorphology***

The Darling Plateau, an ancient landmass worn down by erosion, underlies most of the eastern portion of the Brockman River catchment. To the west, the catchment extends over the Dandaragan Plateau. A major regional fault line, the Darling Fault, separates these two geomorphic regions (Figure 2).

##### **The Darling Plateau**

The Darling Plateau is made up of two major rock sequences. The first sequence is a 10km wide belt of crystalline rocks referred to as the Chittering Metamorphic belt. Intense erosion within the Chittering Metamorphic belt has produced a major north-south trending valley system in which the Brockman River flows south. The second sequence to the east is granitic rock covered with a lateritic cap referred to as the lateritic uplands (Wild and Low, 1978). Laterite is sometimes referred to as ironstone or coffee rock.

The deeply incised Chittering Valley is characterised by dissected, steep slopes and domed granite outcrops high in the landscape with variable and complex soils. Parent materials may be weathered or unweathered gneiss, granite or dolerite or may occur as colluvium. Colluvial lateritic material from the plateau surface may extend down slope. Yellow duplex and brown duplex and gradational earths are the most common soils. Generally, the yellower soils are associated with the granite, and the red and brown soils with dolerite dykes (King and Wells, 1990). Loamy soils, now extensively cleared for agriculture, are found on the lower valley slopes and floodplain.

The lateritic uplands are typified by undulating, dissected land surfaces with, pale orange lateritic soils and pea gravels. Red alluvial, clay soils characterise the valley floors while upland remnants of the plateau surface form higher land with sands and sandy gravels interspersed with laterite outcrops. Saline soils occur within the valley floors.



Most of the area outside reserves is cleared for agriculture with small pockets of native vegetation along fence lines and watercourses. Gully erosion is the predominant erosion hazard but landslips have occurred on the steeper slopes of the Chittering Valley.

### **The Dandaragan Plateau**

The Dandaragan Plateau to the west of the Darling Fault is a wedge shaped erosion remnant of the Perth Basin with sediments covered by recent deposits of sand and laterite (Wild and Low, 1978). Sand plain features dominate the landscape with broad U-shaped valleys, sand-filled drainage lines and some breakaways. The soil pattern is closely related to topography (Churchward, 1980). Brown deep sands, yellow deep sands, pale deep sands, sandy gravels and shallow gravels are dominant, with red deep sandy duplex soils on the valley floors (Moore, 1998).

Soil landscapes are outlined in the Shire of Chittering Land Capability and Management Study prepared by Land Assessment Pty. Ltd. Part 1 – Working Paper and LandSmart™.

### 4.1.3. **Vegetation**

Large areas of native vegetation remain in the eastern part of the catchment in the Avon Valley National Park, the proposed Julimar Conservation Park (currently State Forest) and in the Department of Defence Bindoon Training area. Other areas of native vegetation in the catchment are located within the ten DEC nature reserves and on some private property.

The greatest area of native vegetation occurs within the western forest/woodland and eastern heath regions while the central area consists of severely dissected remnants within an agricultural landscape. These areas have been heavily cleared and now the remaining remnants are generally small and dispersed.

Approximately 201 km<sup>2</sup> (13%) is reserved for conservation purposes with much of this conservation land being confined to the eastern Darling Scarp forests and north-western sand plain. The spatial extent of remnant vegetation in the Brockman River catchment is given in Table 3.

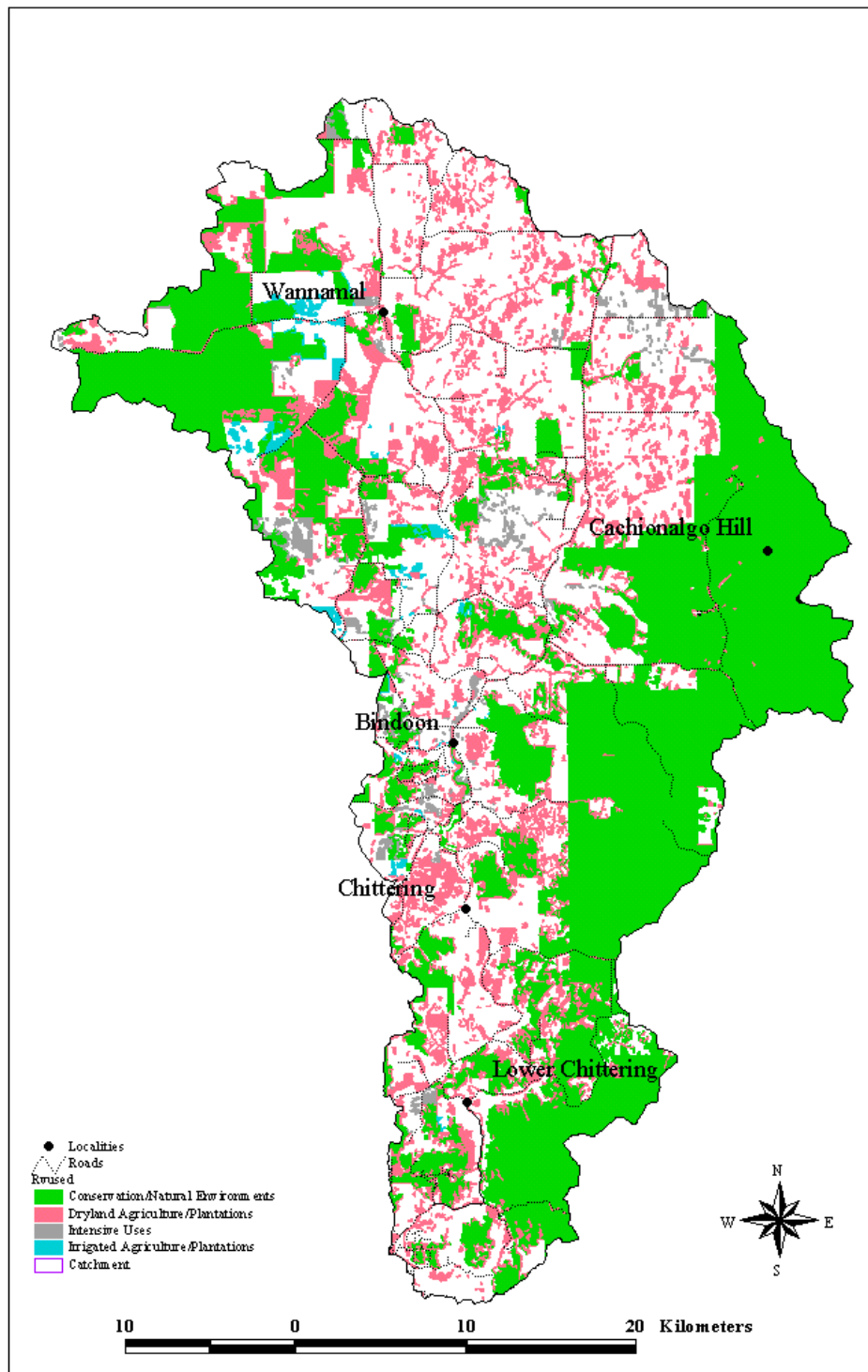
**Table 3: Spatial extent of remnant vegetation in the Brockman River catchment (WRC, 2002).**

|   |       |
|---|-------|
| Total area (km <sup>2</sup> )                       | 1,520 |
| Number of remnants                                  | 2,000 |
| Total Area Of Remnant Vegetation (km <sup>2</sup> ) | 770   |
| % Total Remnant Area                                | 51    |
| Remnant Vegetation Reserved (km <sup>2</sup> )      | 201   |
| % Original Area Reserved                            | 13    |
| % Remnant Area Reserved                             | 26    |

Source: Connell and Ebert (2001).

#### **4.1.4.      *Land Use***

The economy of the Brockman River catchment and the livelihood of its residents are currently based on the natural resources of land and water. Animal products derived from pasture are the most extensive agricultural land use followed by broad scale crops and horticulture (Cook and Hatherly, 1997). The northern part of the catchment is mostly agricultural with cereal, beef, pigs, sheep and wool the major agricultural products with some horticultural products such as grapes and citrus. In the Chittering Valley, production is mostly beef, sheep, citrus and grapes (Figure 4). Expansion of horticulture and viticulture in the catchment is limited by the lack of suitable irrigation water.



**Figure 4:** Land use in the Brockman River Catchment.

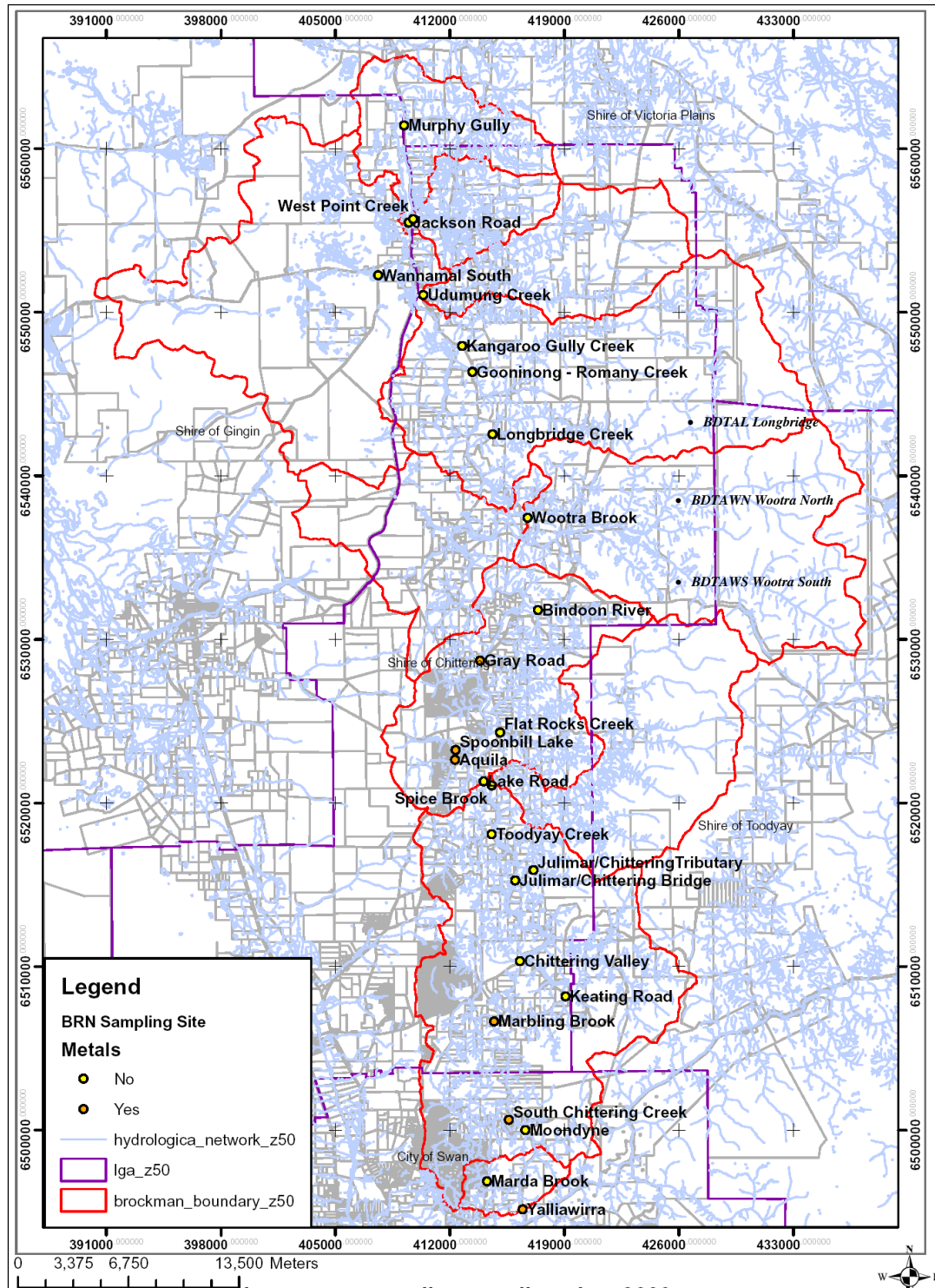
## **5. Methodology**

### **5.1.1.      *Site Selection***

Water samples were taken from twenty-six sites within the Brockman River catchment (Figure 5). Crest Hill Road (BRN11) was removed from the sampling program in 2008 and replaced with Grey Road Bridge (BRN27). These sites were selected to be representative of sub-catchments carrying large volumes of water to the Brockman River, to determine their salinity, relative nutrient and metal contribution, and whether they were situated upstream or downstream of potentially high impact land uses or of likely contaminant sources. Table 3 lists the twenty-six sample sites by site number, site name and relative waterway component. Site location is also provided using street names, northings and eastings.

**Table 4: Location and description of selected sampling sites within the Brockman River catchment.**

| <b>Site No.</b> | <b>Site name</b>                                 | <b>Description of waterway (inc. old site number)</b>                | <b>Easting</b> | <b>Northing</b> |
|-----------------|--|--|----------------|-----------------|
| BRN1            | Murphy Gully Creek                               | BR22 - Bindoon Moora Rd  | 409205         | 6561412         |
| BRN2            | Jackson Road<br>(Wannamal Lake outlet)           | BR21 - Jackson Road  | 409457         | 6555480         |
| BRN3            | West Point Creek                                 | BR20 - West Point  | 409754         | 6555706         |
| BRN4            | Wannamal South                                   | Wannamal South Road  | 407596         | 6552244         |
| BRN5            | Udumung Creek                                    | BR18 - Hay Flat Road   | 410373         | 6551048         |
| BRN6            | Kangaroo Gully Creek                             | BR17A - Bindoon Moora Rd   | 412741         | 6547952         |
| BRN7            | Romany Creek                                     | BR17 - Waldeck West Road -<br>Romany Creek                           | 413360         | 6546355         |
| BRN8            | Longbridge Creek                                 | BR16A - Ashman Rd to gate<br>(2km) over fence & nth on fire<br>break | 414649         | 6542478         |
| BRN9            | Wootra Brook                                     | BR15 - Owen's Road   | 416762         | 6537439         |
| BRN10           | Bindoon River                                    | BR15A - Great Northern<br>Highway small bypass road<br>bridge        | 417372         | 6531777         |
| BRN12           | Flat Rocks Creek                                 | Densley Road (off Flat Rocks)  | 415077         | 6524296         |
| BRN13           | Spoonbill Lake                                   | BR12 - spillway from Spoonbill<br>Reserve                            | 412361         | 6523223         |
| BRN14           | Aquila, Hart Drive                               | BR12A - Flows through Aquila<br>Reserve                              | 412306         | 6522632         |
| BRN15           | Lake Road<br>Brockman River                      | BR9 - Bridge on Lake Road<br>below Lake Weir                         | 414090         | 6521308         |
| BRN16           | Spice Brook                                      | BR11A - off Lake Road across<br>paddock to bridge                    | 414509         | 6521156         |
| BRN17           | Toodyay Creek<br>Toodyay Creek                   | 100m north of Blue Plains<br>Road on Chittering Road                 | 414561         | 6518111         |
| BRN18           | Julimar/Chittering Bridge<br>Brockman River      | BR5 - Julimar Rd/Chittering Rd<br>intersection                       | 415996         | 6515275         |
| BRN19           | Julimar/Chittering Tributary<br>Julimar Rd Creek | BR8 - Julimar Rd (500m up<br>from intersection Chittering<br>Rd)     | 417103         | 6515877         |
| BRN20           | Chittering Valley                                | Cnr Chittering Valley and<br>Chittering Road                         | 416288         | 6510308         |
| BRN21           | Keating Road                                     | BR4 - 500m east on Keating<br>Road to gateway - Bitney<br>Springs    | 419248         | 6508210         |
| BRN22           | South Chittering Creek                           | Chittering Road just north of<br>Wilson Road                         | 415559         | 6500608         |
| BRN23           | Marbling Brook                                   | Bridge on Chittering Road  | 414704         | 6506641         |
| BRN24           | Moondyne<br>Brockman River                       | BR2 - from crossing  | 416623         | 6499996         |
| BRN25           | Yalliwirra<br>Brockman River                     | BR1 Gauging Station  | 416450         | 6495160         |
| BRN26           | Marda Brook                                      | Smith Road bridge/gate   | 414266         | 6496860         |
| BRN27           | Grey Road Bridge                                 | Brockman River   | 413885         | 6528696         |



**Figure 5:** Sampling site locations within the Brockman River Catchment.  
 NB: Sampling Sites in *italic* are not part of the BROCKMANWQ program. These sites were part of the BDTA water quality monitoring program (CLG, 2010).



### **5.1.2.      *Water Sampling***

Sampling of the Brockman River was undertaken in 2017 on 25<sup>th</sup> August and 22<sup>nd</sup> September. The collection of the samples followed strict protocols to prevent contamination and ensure consistency of results. An outline of the sampling collection technique is included in the sampling and analysis plan for the Brockman River catchment (see Appendix E).

Field observation forms were filled out for each water sample. All samples collected from the Brockman River catchment were transported to and analysed by a National Association of Testing Authority (NATA) accredited body - MPL Laboratories (Perth??).

### **5.1.3. Water Analysis**

Water at each of the sites was measured *in situ* for physical properties (pH, specific conductivity, salinity and temperature) using WTW pH and EC probes. Samples were collected and analysed for a range of contaminants likely to be present in semi-rural, agricultural catchments. They were then sent to MPL Laboratories to be analysed for nutrients including total nitrogen, total oxidised nitrogen, nitrogen as ammonia, total organic nitrogen, total phosphorus, filterable reactive phosphorus and total suspended solids.

Water samples from Spoonbill Lake (BRN 13), Aquila (BRN 14), Lake Rd (BRN 15), South Chittering Creek (BRN 22), Marbling Brook (BRN 23), Yalliarwarra (BRN 24) and Grey Rd (BRN 27) were also tested for metals. These included cadmium, mercury, arsenic, copper, lead, zinc, aluminium, chromium, iron and nickel.

Table 5 summarizes MPL laboratories analysis techniques used for physical parameters, nutrients and heavy metals.

Table 5: Summary of chemical analysis techniques.

| Parameters    | Limit of Reporting (LOR) | Variable Unit | Analysis Technique | Lab Reference-WILAB (based on APHA) |
|---------------|--------------------------|---------------|--------------------|-------------------------------------|
| Cond (Comp25) | 1                        | uS/cm         | direct read        | 5                                   |
| pH            | 0.05                     |               | direct read        | 5                                   |
| TSS           | 1                        | mg/L          | grav               | 5                                   |
| PO4-P         | 0.003                    | mg/L          | DA                 | 18                                  |
| NOx-N         | 0.005                    | mg/L          | DA                 | 18                                  |
| TP            | 0.01                     | mg/L          | DA                 | 18                                  |
| TN            | 0.05                     | mg/L          | DA                 | 18                                  |
| Na            | 1                        | mg/L          | ICP OES            | 17                                  |
| K             | 0.1                      | mg/L          | ICP OES            | 17                                  |
| Ca            | 0.1                      | mg/L          | ICP OES            | 17                                  |
| Mg            | 0.1                      | mg/L          | ICP OES            | 17                                  |
| Hard          | 1                        | mg/L          | ICP OES            | 17                                  |
| Al            | 0.005                    | mg/L          | ICP OES            | 17                                  |
| B             | 0.05                     | mg/L          | ICP OES            | 17                                  |
| Ba            | 0.001                    | mg/L          | ICP OES            | 17                                  |
| Be            | 0.0005                   | mg/L          | ICP OES            | 17                                  |
| Co            | 0.005                    | mg/L          | ICP OES            | 17                                  |
| Cr            | 0.001                    | mg/L          | ICP OES            | 17                                  |
| Cu            | 0.005                    | mg/L          | ICP OES            | 17                                  |
| Fe            | 0.01                     | mg/L          | ICP OES            | 17                                  |
| Mn            | 0.001                    | mg/L          | ICP OES            | 17                                  |
| Mo            | 0.005                    | mg/L          | ICP OES            | 17                                  |
| Ni            | 0.005                    | mg/L          | ICP OES            | 17                                  |
| Sn            | 0.05                     | mg/L          | ICP OES            | 17                                  |
| Sr            | 0.005                    | mg/L          | ICP OES            | 17                                  |
| Ti            | 0.01                     | mg/L          | ICP OES            | 17                                  |
| V             | 0.002                    | mg/L          | ICP OES            | 17                                  |
| Zn            | 0.005                    | mg/L          | ICP OES            | 17                                  |
| As            | 0.001                    | mg/L          | GFAAS              | 6                                   |
| Pb            | 0.001                    | mg/L          | GFAAS              | 6                                   |

## **6. Results and Discussion**

The National Water Quality Management Strategy provides guidance on both ecosystem and human health protection. Water quality guidelines are provided for a range of environmental values including aquatic ecosystems, primary industries, recreation and aesthetics, drinking water, industrial water, cultural issues, and monitoring and assessment (ANZECC & ARMCANZ, 2000). This report will compare sample concentration results with aquatic ecosystem trigger values for lowland river systems and, when necessary, livestock drinking water trigger values. This is in accordance with the trigger values suggested in the Brockman River Management Plan and the “Swan Canning Cleanup Program Action Plan”.

The Guidelines recognise three levels of protection for aquatic ecosystems; those with high conservation value, slightly to moderately disturbed ecosystems and highly disturbed ecosystems. To assess the level of toxicant contamination in aquatic ecosystems, trigger values were developed from data using toxicity testing on a range of test species. The trigger values (99%, 95%, 90% and 80%) approximately correspond to the levels of protection described above. This report will use the 95% protection level for aquatic ecosystems due to the high conservation value of the receiving environment of the Swan River.

It is important to note that exceeding a trigger value does not indicate that “standards” are not being met, but is rather an indication that further consideration should be given to the situation. It indicates that there is the potential for an impact to occur and should therefore trigger a management response such as further investigation or adaptation of the guidelines according to local conditions (ANZECC & ARMCANZ 2000). No ecosystem is pristine, so when using guidelines the realistic and achievable water quality of the Brockman River should be considered.

### **6.1.1.      *Water Quality***

#### **Flow and Rainfall**

The Brockman catchment makes up approximately 0.5% of the Avon catchment and discharges an average of 34 million cubic metres of water per year, which is roughly 5.5% of the Avon River annual flow (Land Assessment Pty. Ltd, 1999). In comparison to similar data from the Ellen Brook it can be noted that a significantly greater percentage of rainfall is retained and used within the Brockman River catchment.

The Brockman River flows south along the western edge of the Darling Plateau through a deeply incised valley to join the Avon River between the Walyunga and Avon Valley National Parks. The Wannamal Lake system to the north, and seasonal streams flowing from the east and west, drain directly into the Brockman River which meanders through three other wetland reserves including the Mogumber, Betts and Chittering Lakes Nature Reserves.

The Wannamal Lake system is listed as a culturally and ecologically significant wetland (Environment Australia, 2001). Analysis of water quality readings (J. Lane, CALM, pers. Comm.) since 1978 indicates that salinity in the lake is increasing. Observations made by long time residents of the area suggest that during the early 1950's the water was relatively fresh and that good clover pastures grew in nearby paddocks that are now bare salt scalds (Pers. Comm. D. Purser).

The township of Bindoon is situated on the Brockman River where it flows into Lake Needoonga, which is part of the Chittering Lake system and a wetland of National Significance (Environment Australia, 2001).

In the summer months water flow in the Brockman River is only from the southern end of the catchment. In 1975, CALM constructed a weir at the end of the Chittering Lakes Nature Reserve to control the levels of Chittering and Needoonga Lakes. The gates in the weir regulate the flow of water and the depth of the lakes. The weir was installed

after a drain was constructed that caused the lakebed to drain prematurely, impacting on the bird-breeding season.

The aim of the water management is to achieve a desirable water level in the lake throughout the year. The lake should be dry from mid-March to the opening rains and the more saline waters that accumulate during mid to late summer should not be released downstream in an uncontrolled manner (P. Dans, pers. Comm.). Thus, during the summer months, only the catchment south of the weir contributes to the water flow in the Brockman River.

The water levels in Lake Chittering are managed for:

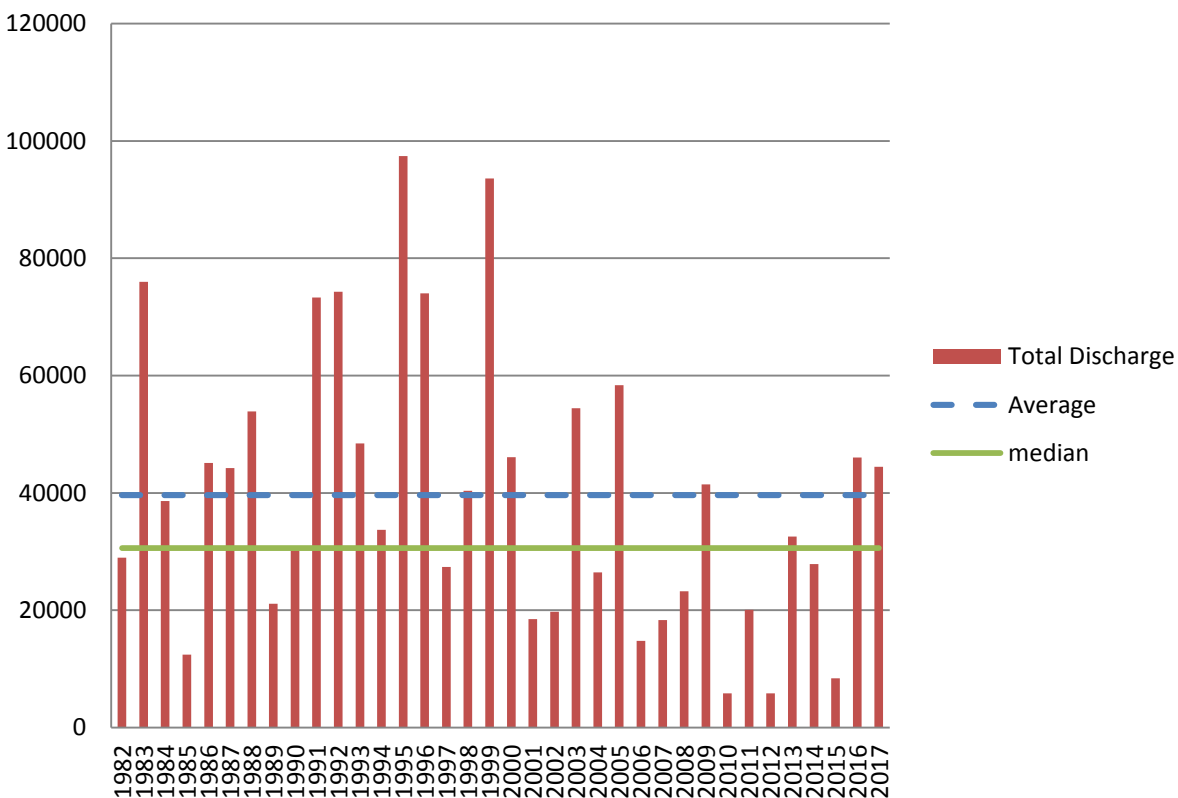
- Wildlife management to sustain the lake vegetation survival and regeneration and the annual bird breeding season;
- The farming industry to avoid excessive flooding of adjoining agricultural land, and;
- The horticultural industry to avoid releasing excessively saline waters down the Brockman River that adversely impacts the opportunity for farmers to irrigate horticultural crops.

The Water and Rivers Commission has two monitoring stations along the Brockman River. The first monitoring station Tanamerah (S16006) is located a few kilometres upstream of the town of Bindoon at 413589E, 6531899N. This station records stage flow data for the Upper Catchment, which covers an area of approximately 96,000 hectares (Fulwood, 2001). The second monitoring station, Yalliwirra (S616019) is situated at the base of the Catchment at 416449E, 6495149N. It records stage flow data for the entire catchment, which covers an area of approximately 151,000 hectares.

Spoonbill Lake is one of two remaining fresh to marginal waterways monitored in the Brockman River catchment for salinity. This puts significant importance and pressure on this resource as it continues to feed into the lakes of Chittering and supports downstream irrigation. It must be noted that water extraction has occurred within the Spoonbill subcatchment in recent years. This has resulted in dramatic fluctuations in

Spoonbill Lake. Ongoing monitoring will be required to ensure that the existing ecosystem health and function of the reserve, subcatchment and Chittering Lakes is not negatively affected.

616019 Yalliwirra



### **6.1.2.      *Physical Properties***

#### **Temperature**

Samples taken were from sites with flowing water at a depth ranging from 10-20cm below the surface and not in contact with the sediment at any time. September temperatures ranged between 11.9 °C at Marbling (BRN29) and 17.9°C at Wannamal South (BRN4). Water temperatures were generally warmer during the September sampling run, and ranged between 15.5°C at Wilson Road (BRN22) and 26.6°C at Murphy Gully (BRN1), (Figure 6).

#### **pH**

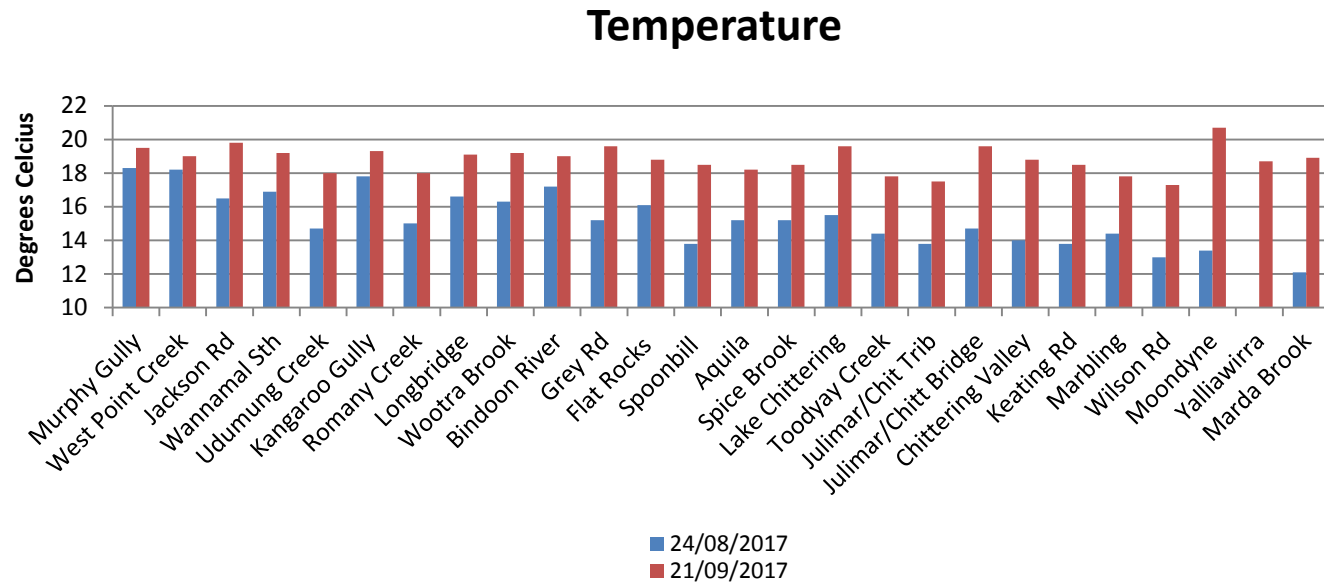
pH is a measure of acidity and alkalinity. With a pH of 7.0 being neutral, a pH of less than 7 being acidic and a pH of greater than 7 being alkaline or basic. pH has an effect on chemical reactions and can alter other water quality parameters. The importance of pH on water quality lies mainly in its effect on other water quality parameters and on chemical reactions. For example, pH can affect the solubility and toxicity of a wide range of metallic contaminants (IEA 2003).

Since 2007 the Brockman River has recorded slightly alkaline pH, but the majority of sites fall within the ANZECC water quality guidelines of 6.5-8 for lowland rivers. Most of the twenty-six sites sampled recorded alkaline results, with the highest pH reading being 8.36 at Lake Chittering (BRN15) during the October sampling occasion. The highest pH reading during the September sampling occasion was 8.08 at Jackson Road (BRN3). Generally the results in 2017 were similar previous years (Table 4). Lake Chittering (BRN15) and Murphy Gully (BRN1) have consistently given alkaline readings, with seven of the last 10 years recording alkaline results.



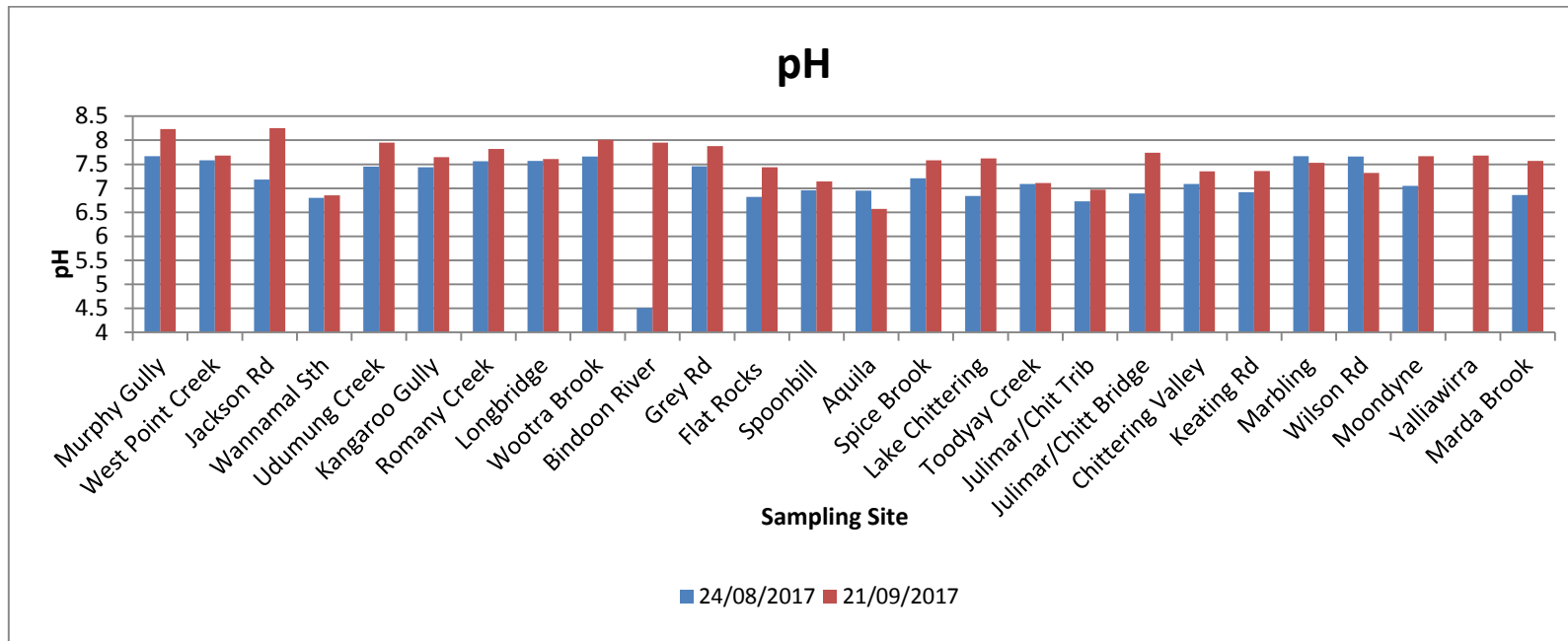
**Table 4.** Summary of alkaline sites in previous years

| Year | Highest pH Reading | # of Alkaline Sites |
|------|--------------------|---------------------|
| 2007 | 8.51               | 2                   |
| 2008 | 9.9                | 4                   |
| 2009 | 8.579              | 9                   |
| 2010 | 10.125             | 14                  |
| 2011 | 9.76               | 7                   |
| 2012 | 9                  | 3                   |
| 2013 | 8.304              | 3                   |
| 2014 | 9.22               | 10                  |
| 2015 | 8.45               | 10                  |
| 2016 | 8.36               | ?                   |



\*blanks represent no sample taken

**Figure 6:** Water temperature of surface water within the Brockman River Catchment 2017.



**Figure 7:** pH of surface water within the Brockman River catchment 2017.

### **Electrical Conductivity**

Electrical conductivity (EC) is the total concentration of inorganic ions (particularly sodium, chlorides, carbonates, magnesium, calcium, potassium and sulfates). Conductivity is often used as a measure of salinity. The conductivity level can directly affect the use of the water. For example, flora and fauna have varying tolerance levels to salinity. Therefore, this can have adverse effects on crops and stock as well.

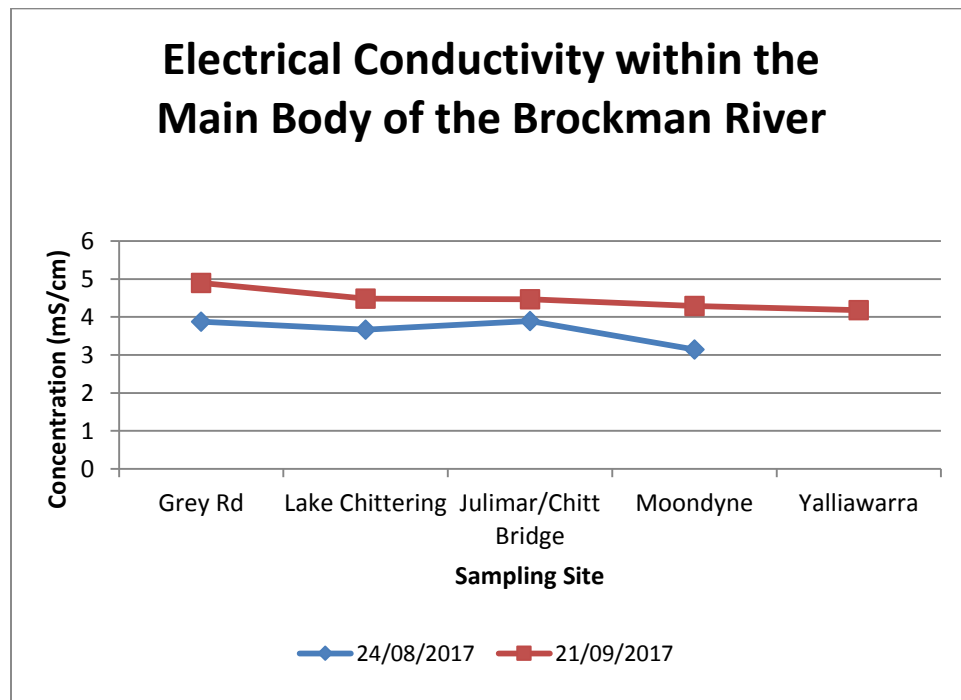
Electrical conductivity ranged from 0.582mS/cm at Marda Brook (BRN26) to 13.946mS/cm at Murphy Gully (BRN1). All sites consistently exceeded the ANZECC guidelines for freshwater lowland rivers of 0.12mS/cm to 0.3mS/cm (Figure 9). It should be noted that of the sites that exceeded the guidelines for ecosystem value, the majority of them were also within the brackish levels, with 22 sites within brackish levels on at least one sampling occasion. Brackish water is between 3mS/cm and 9.1mS/cm, saline water is between 9.5mS/cm and 23mS/cm), anything above 2.7 is becoming brackish and would be detrimental for irrigation of stone fruit and citrus orchards (Figure 9).

Marda Brook (BRN26) and Spoonbill (BRN13) recorded marginal levels of EC on both occasions in 2017.

Murphy Gully (BRN1), Jackson Rd (BRN2), Longbridge Gully (BRN8) and Wootra Bk (BRN9), were identified as saline sampling sites. The Marbling Brook which is the last 'freshwater' perennial stream in the Brockman River catchment recorded fresh to brackish conductivity readings in 2008-2013, and in 2014 thru 2017 it was recorded as marginal. The increasing conductivity levels in the Marbling Brook could be a direct result of the increased pressure on the aquatic ecosystem due to surrounding development and the number of bores drawing up water in the Maryville estate and the reduced rainfall. These past results have caused landholders in the catchment to voice their concerns over the lack of good quality water required for new and expanding agricultural developments

over the years (WRC, 2003). The conductivity readings over the past nine years have showed a slight decreasing trend. Ongoing monitoring is essential.

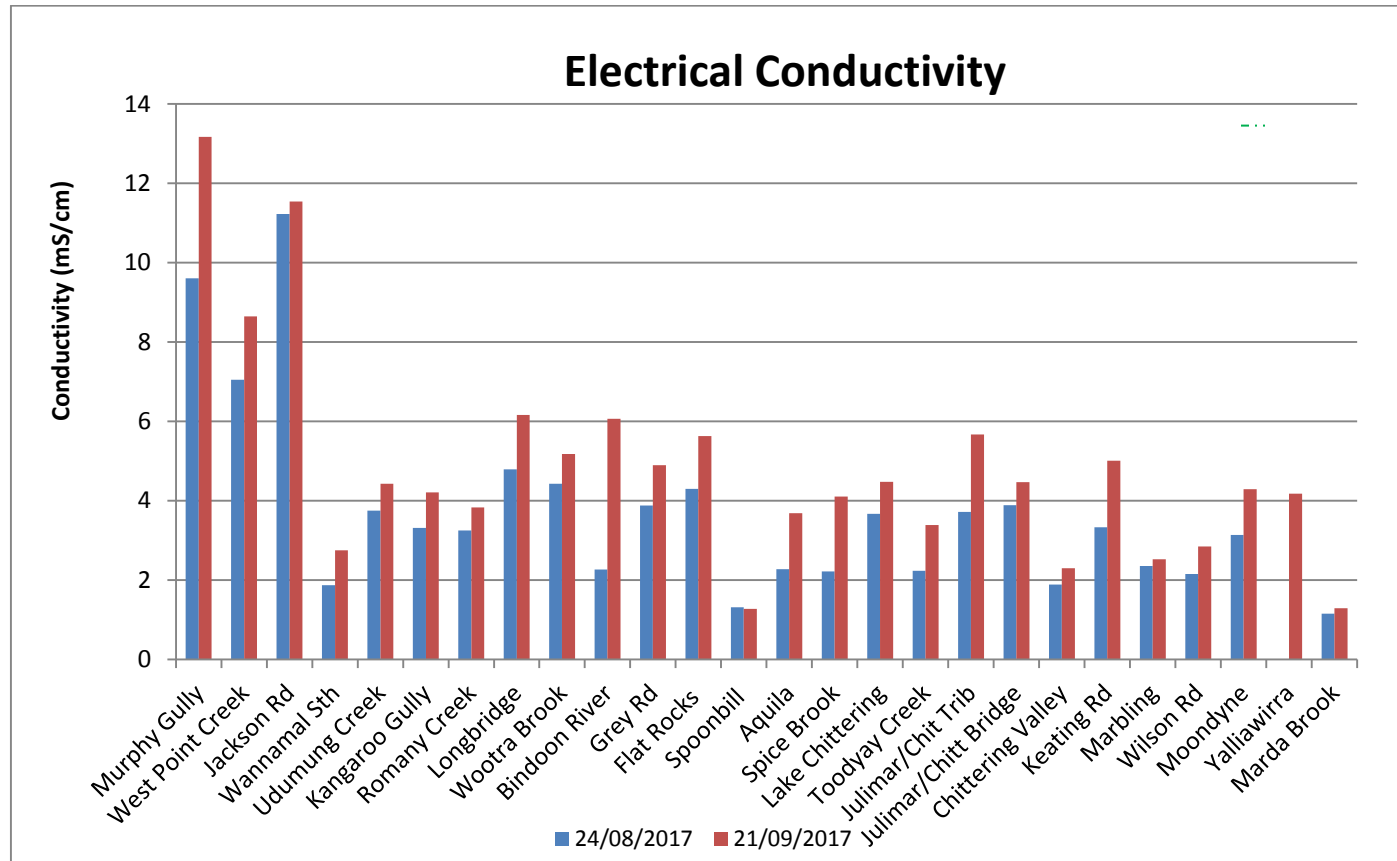
It is also of great concern for the environmental value that all sites consistently exceeded ANZECC water quality guidelines for lowland river systems, and were generally within the brackish to saline levels. The highest conductivity reading of 13.946mS/cm within the Brockman Catchment was recorded at Murphy Gully which is located at the northern most point of sampling along the Brockman River. Conductivity levels recorded at the sampling sites along the main body of the Brockman River were found to decrease from north to south (Figure 8). This pattern was also noted in the 2006 through to 2015 *Water Quality Monitoring Snapshot of the Brockman River catchment* (EBICG, 2007, 2008, 2009, 2010, 2011, 2012, 2013 & 2014, 2015). Levels dropped to 0.582mS/cm at Marda Brook (BRN26) during the September sampling occasion. This site is located just north of the confluence of the Brockman River and the Avon River. This concentration was above the guideline, marginal and as a result, unacceptable for the irrigation of stone fruit, citrus, peas, carrot, onion, grapes, lettuce and tomato. It is also unacceptable for human consumption or use in hot water systems (Appendix C).



**Figure 8:** Electrical conductivity within the main body of the Brockman River, recorded at sampling sites Grey Road (BRN27), Lake Chittering (BRN15) Julimar/Chittering Bridge (BRN18), Moondyne (BRN24) and Yalliwirra (BRN25) in 2017.

The high level of vegetation clearing, primarily at the top of the catchment creates a weak correlation with increasing stream salinity, and a strong correlation with increasing groundwater salinity (Fulwood, 2001). This shows that the higher conductivity levels coming down the catchment and tributaries are diluted as they flow through the Brockman River catchment and into the Avon River. This trend was also described in the *Salinity Survey in the Shire of Chittering* (Angell, 2000). Additionally, Angell (2000) found that a considerable portion of stream flow is contributed to the Brockman from saline groundwater sources. Base flow maintains stream flow throughout the year however, if extremely saline, base flow can have devastating effects on the river particularly during low rainfall seasons (approximately 200mm below average). This results in lower surface water inputs

and low dilution rates. With exception to rainfall, salinity within the catchment has increased over a period of time (Fulwood, 2001).



**Figure 9:** Conductivity in surface water within the Brockman River catchment 2017.



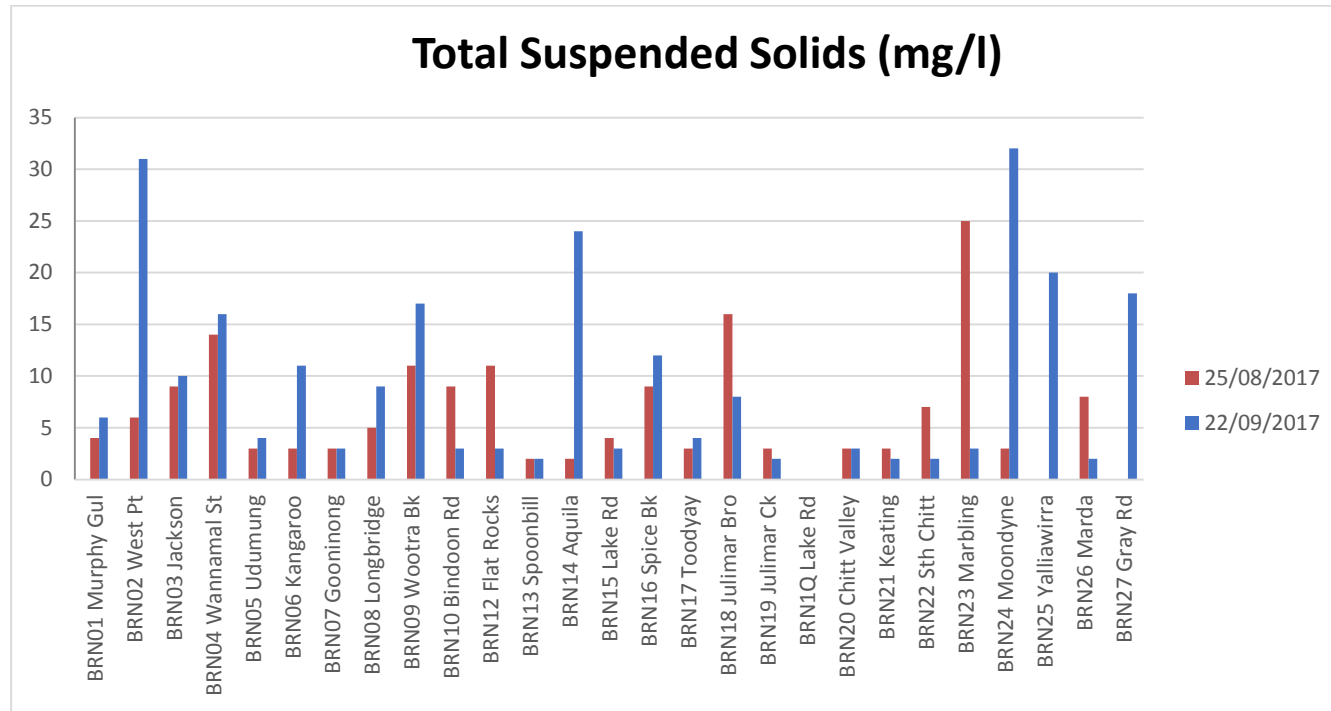
### **Total Suspended Solids**

Total Suspended Solids (TSS) refers to naturally occurring suspended particles including; silt, phytoplankton and organic matter within a water body. Natural sources of TSS include water turbulence from storms, phytoplankton blooms and wind/wave action. However, TSS may also indicate detrimental environmental conditions such as erosion. This makes levels higher than normal in the water body and can result in increased deposition of material to the substrate that may smother faunal communities (McTaggart, 2002).

There are large variations in TSS throughout water bodies, therefore guidelines should be determined by including information on natural levels within the regional area of sampling. As no ANZECC guideline currently exists for TSS, this report will use the interim guideline of 6mg/L adopted by the Department of Water and originally developed by the Waters and Rivers commission for the Wilson Inlet report to community (October 2000). TSS in the Brockman catchment ranged between laboratory detection limits and 36mg/L recorded at Marbling Brook (BRN23).

7 of the sites recorded a result over the guideline of 6mg/L for TSS during the September sampling run, while there were 10 sites with a reading over the guideline during the October sampling occasion.

High TSS levels from contributing sub catchments are located across the catchment in areas of intensive stocking rates and grazing, high levels of cleared vegetation and a lack of riparian vegetation. Stock have access to waterways in most of these areas causing increased erosion rates and sedimentation.



\*blanks represent no sample taken or below limit of reporting

**Figure 10:** Total Suspended Solids in surface water within the Brockman River catchment 2017.

### **6.1.3.        *Nutrient concentrations in water***

Most nutrients present in the catchment are stored in the soils and are transported to the Brockman River via surface water (tributaries, drains and general run-off). The original sources of nutrients include; weathering, leaching from soils particularly in eroded areas, fertiliser run-off, detergents, sewerage, fixation by some plants, and decomposition of plant matter, animal wastes and other organic wastes (IEA 2003). Nitrogen and phosphorus are the two major essential elements to plants. Excessive amounts of nutrients in waterways can result in eutrophication with plant and algae growth, increases in nuisance insect numbers and unbalanced aquatic ecosystems. Nutrients include nitrogen in the form of ammonia, nitrate and nitrite, and phosphorus in the form of phosphate either dissolved (soluble reactive phosphate) or particulate (suspended).

#### **Total Nitrogen**

When plants or animals die they release nitrogen in the form of ammonium ( $\text{NH}_4$ ) that can then be oxidised by nitrifying bacteria to become nitrite and nitrate in a process known as nitrification. Total nitrogen (TN) refers to all forms of nitrogen present including organic (e.g. plant decay matter) and inorganic in the forms of ammonia, nitrate and nitrite (McTaggart 2002). Sources of nitrogen include fertilisers, industrial cleaning operations, feed lots, animal droppings, combustion of fossil fuels and plant debris.

The majority of the readings that were above the ANZECC guideline of 1.2mg/L were on the September sampling occasion when 10 of the twenty-six sites had a result greater or equal to the guideline. The majority were in the northern end of the catchment. Only 3 sites recorded Total Nitrogen readings above the guideline in October. Romany Creek (BRN7) recorded the highest concentration of 32.2mg/L on the September sampling occasion while Wannamal South (BRN 4) recorded the highest concentration for the October sampling run, with 2.8mg/L. Further monitoring is recommended.

## **Ammonia as Nitrogen**

All sites were within the ANZECC guideline of 0.08mg/L on both sampling occasions (Figure 12). West Point Road (BRN3) and Flat Rocks Road (BRN1\2) did record levels above the guideline which is highly unusual. These two sites are also consecutive in terms of the main channel of the Brockman River. The likely cause is related to the chittering lake system discharging runoff however more investigations need to be made.

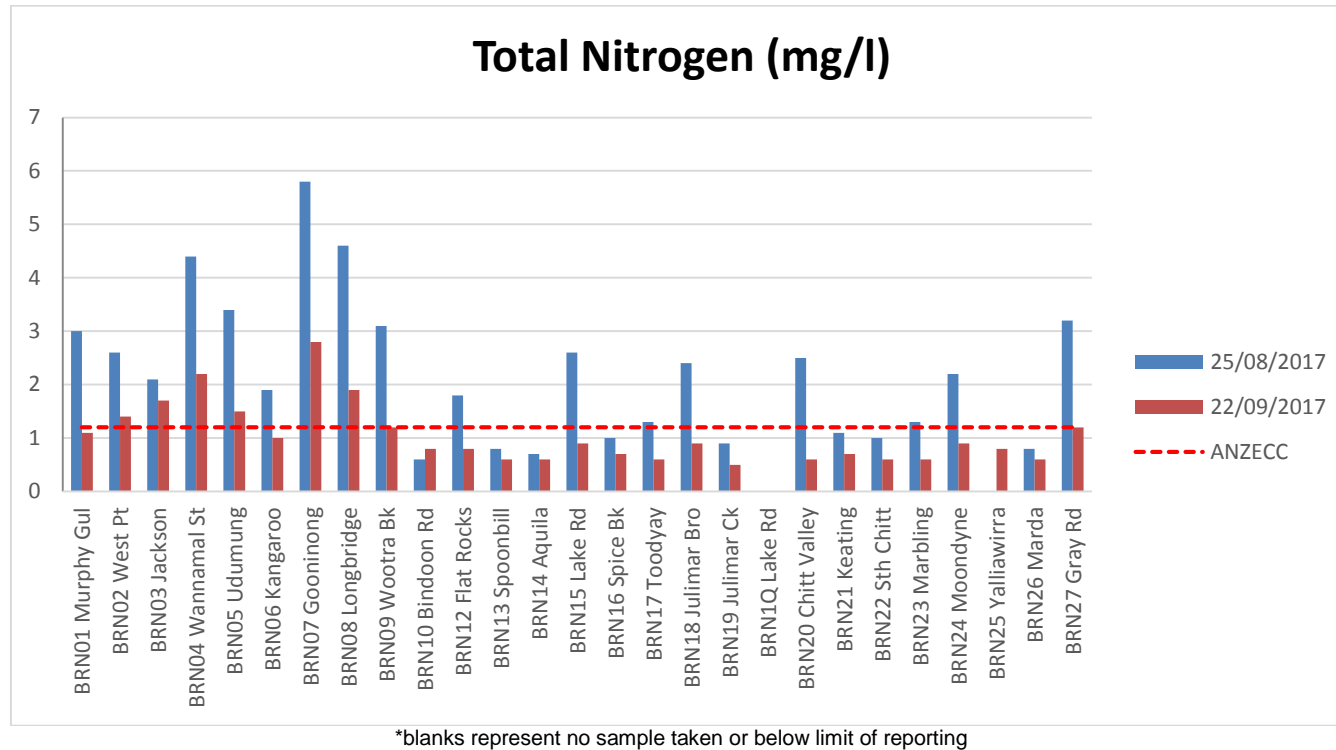
Ammonia is used in fertilisers and cleaning agents. The majority of sampling sites are surrounded by agriculture including cattle grazing, pastures and cropping, stock yards, orchards and horticulture which are sources of ammonia nitrogen.

## **Total Oxidised Nitrogen**

Total oxidised nitrogen is the sum of the oxidised forms of nitrogen, which includes nitrite and nitrate, and is often referred to as  $\text{NO}_x$ . Nitrite can be converted to nitrogen gas by denitrifying bacteria and ammonium ( $\text{NH}_4$ ) and in the form of nitrate; hence plants can easily absorb this form of nitrogen in a continuous cycle as it is readily soluble in water and is rapidly transported through the catchment via surface run-off, sub-surface and groundwater flows (Horwood, 1997).

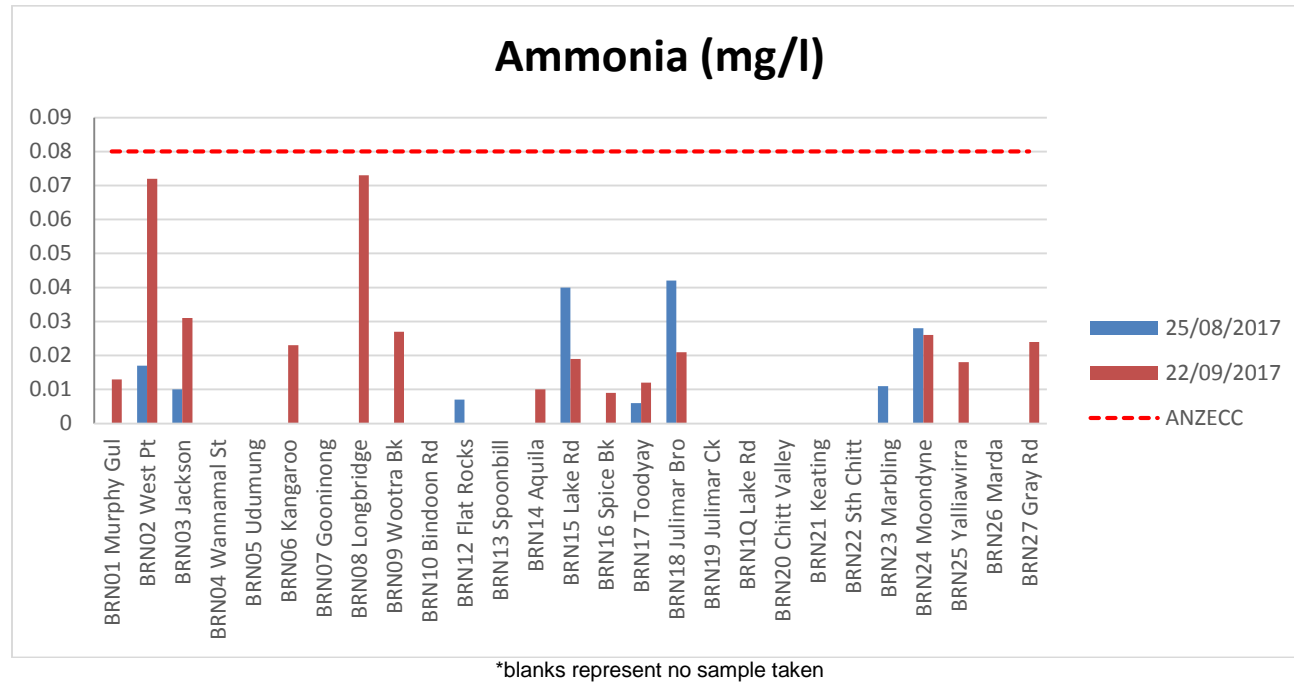
Unfortunately due to a laboratory error TON was not measured for the 2015 sampling period. This will be looked at closely in 2017. The levels from 2014 have been included in this report as an illustration of the previous years results.

Cereal production, beef, pigs, and sheep may contribute to the higher concentrations of TON in the northern half of the catchment. In comparison, the primary production of the southern half of the catchment in the Chittering valley is vineyards and orchards. As a result the TON entering the river upstream from runoff carrying manure and organic matter is diluted as it flows through the catchment.



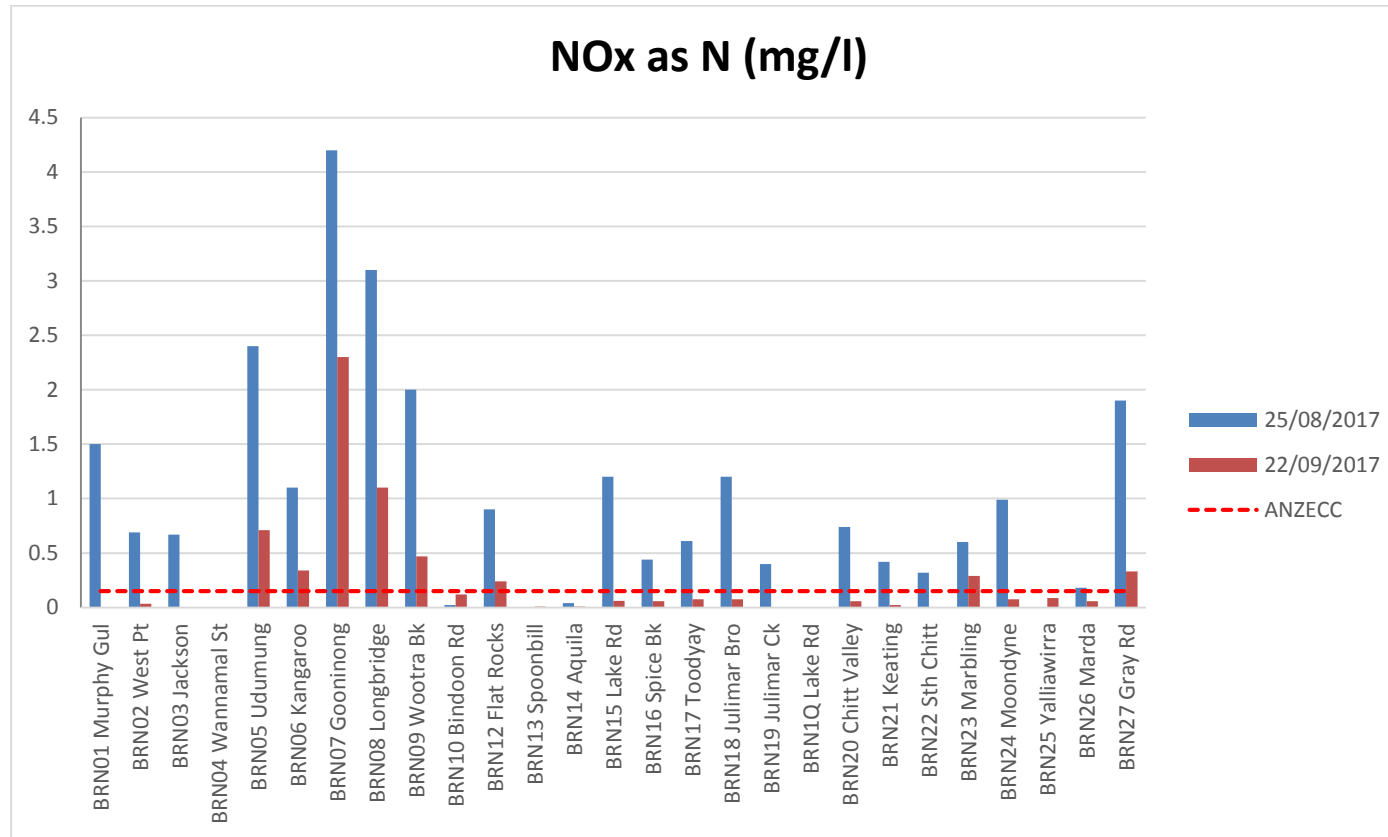
**Figure 11:** Total Nitrogen in surface water within the Brockman River catchment 2017.

## Brockman River Catchment Water Quality Monitoring Snapshot August & September 2017



**Figure 12:** Ammonia as NH<sub>4</sub>N concentrations in surface water within the Brockman River catchment 2017.

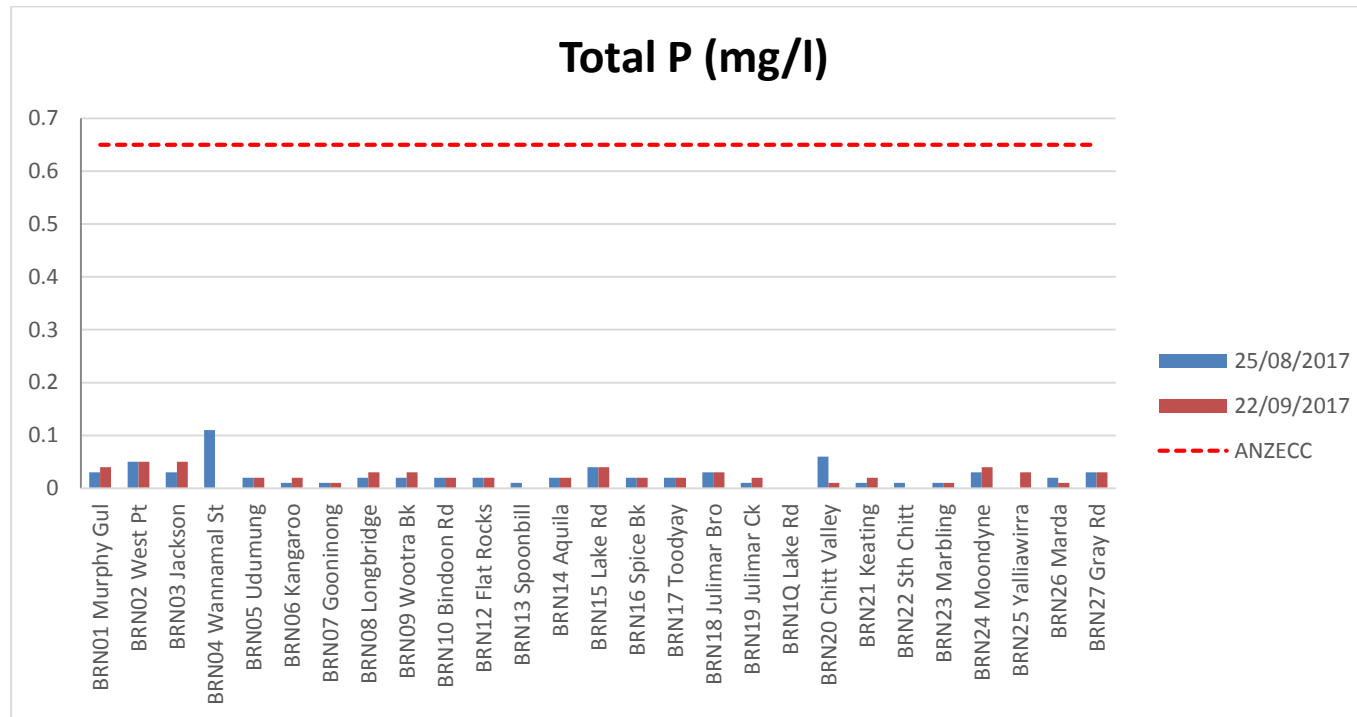
## Brockman River Catchment Water Quality Monitoring Snapshot August & September 2017



## Brockman River Catchment Water Quality Monitoring Snapshot August & September 2017

\*note blanks represent no sample taken

2017





## **Total Phosphorus**

Total phosphorus (TP) is a measure of all phosphorus in the water including the available and unavailable (or potentially available) forms of phosphorus including orthophosphates (fertilisers), organic phosphate (plants & animals) and condensed phosphates (inorganic cleaning agents). Sources of phosphorus include fertilisers, plant debris, detergents, industrial wastes and lubricants (McTaggart 2002). Phosphorus is naturally occurring in the environment and is usually the limiting factor for aquatic plant growth as it is generally lower than nitrogen in most waterways. However, an increase in the total P level in freshwater bodies stimulates the production of *Chlorophyll a* in phytoplankton and results in an algal bloom (Russell, 2001).

As plants and animals excrete waste or die then decay, the organic phosphate sinks to the bottom of the waterway where bacteria convert it back to inorganic phosphate. Inorganic phosphate returns to the water column when sediments are disturbed, making it available again to plants which uptake it and it continues in the cycle. Inorganic phosphate is not as mobile as soluble forms of nutrients and tends to be absorbed by most soils and particulate material. This results in a steady accumulation of phosphorus slowly moving through the soil profile. Holding time of phosphorus in the catchment depends on the recharge rate to groundwater, rate of adsorption to soil particles and the extent of soil saturation (Gerritse, 1996).

**Table 5. Number of sites (out of 26) equal to or exceeding the ANZECC Total Phosphorus guideline for lowland rivers.**

| Year | Number of Sites |
|------|-----------------|
| 2006 | 0               |
| 2007 | 0               |
| 2008 | 7               |
| 2009 | 4               |
| 2010 | 11              |
| 2011 | 10              |
| 2012 | 11              |
| 2013 | 3               |
| 2014 | 0               |
| 2015 | 0               |
| 2016 | 0               |

Phosphorus concentrations in the Brockman catchment had gradually increased since 2006, when there were no sites that recorded concentrations over the ANZECC guideline of 0.065mg/L for lowland river systems and ecosystem health. In 2017, no sites were over the guideline (Table 5). No site recorded a value over the limit of reporting (0.05mg/L).

Duplex soils of sand over clay and loamy clays with high nutrient retention capabilities dominate on the Darling and Dandaragan Plateaus of the Brockman River catchment. These soils have a high nutrient retention capacity which reduces the level of nutrients entering the waterways other than through erosion and sedimentation (DEBCMP, 2001).

According to Russell (2001) it is storm events that trigger the hydrological pathways important for phosphorus loss. Export of phosphorus during peak flow times can get up to 20 times higher than pre-storm levels in stream flow from an

agricultural catchment. Most of the phosphorus exported from an area during these periods of heavy rainfall and storm activity are in particulate form as it is carried primarily in sediment and soil as a result of rill, gully and sheet erosion. Because of this total phosphorus concentrations are generally higher at the beginning of the rainfall season when the creeks and rivers are experiencing the “First flush”.

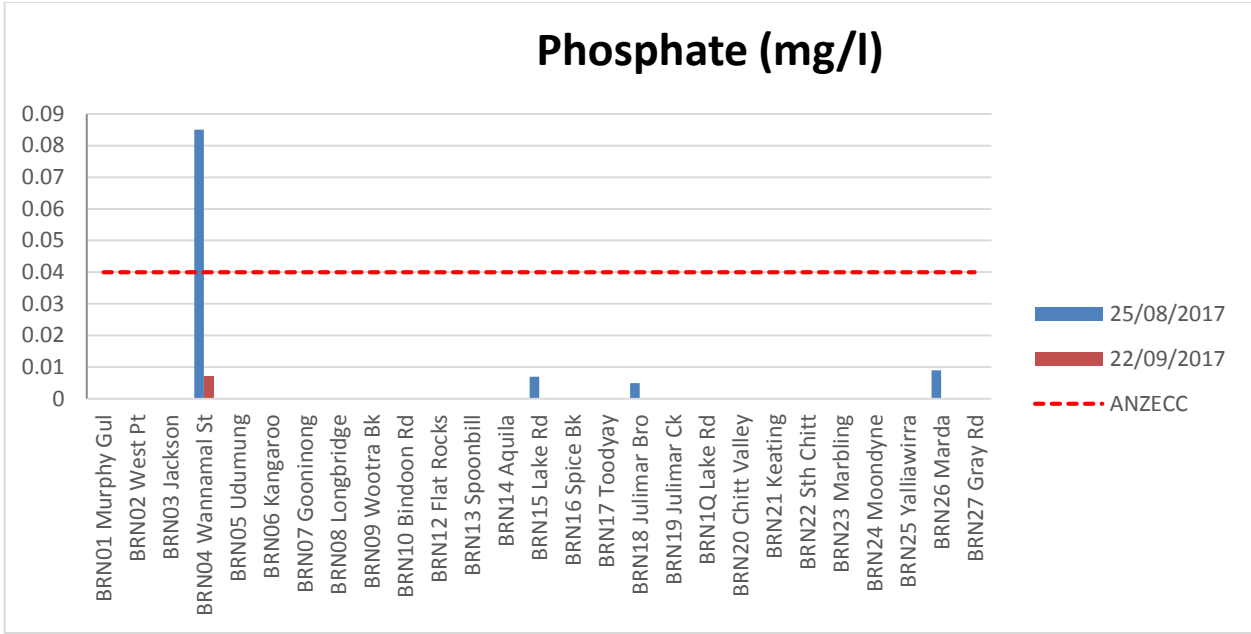
This theory may explain why the recordings have varied so much over the last decade, and we may find that the levels correlate with the time since a heavy weather event at the time of sampling. Continued long term monitoring is recommended to gain an understanding of phosphorus export from this catchment.

### **Soluble Reactive Phosphorus**

Soluble reactive phosphorus (SRP) measures only the dissolved phosphorus in water and provides a measure of the immediately available phosphate in the system at the time of sampling; it is also referred to as  $\text{PO}_4$ . As this form of phosphorus is readily available it is more likely to stimulate algal blooms and this can lead to more decaying vegetation which alters river characteristics including elevated temperature, reduced oxygen and fish kills. This nutrient enrichment process is known as eutrophication (McTaggart, 2002).

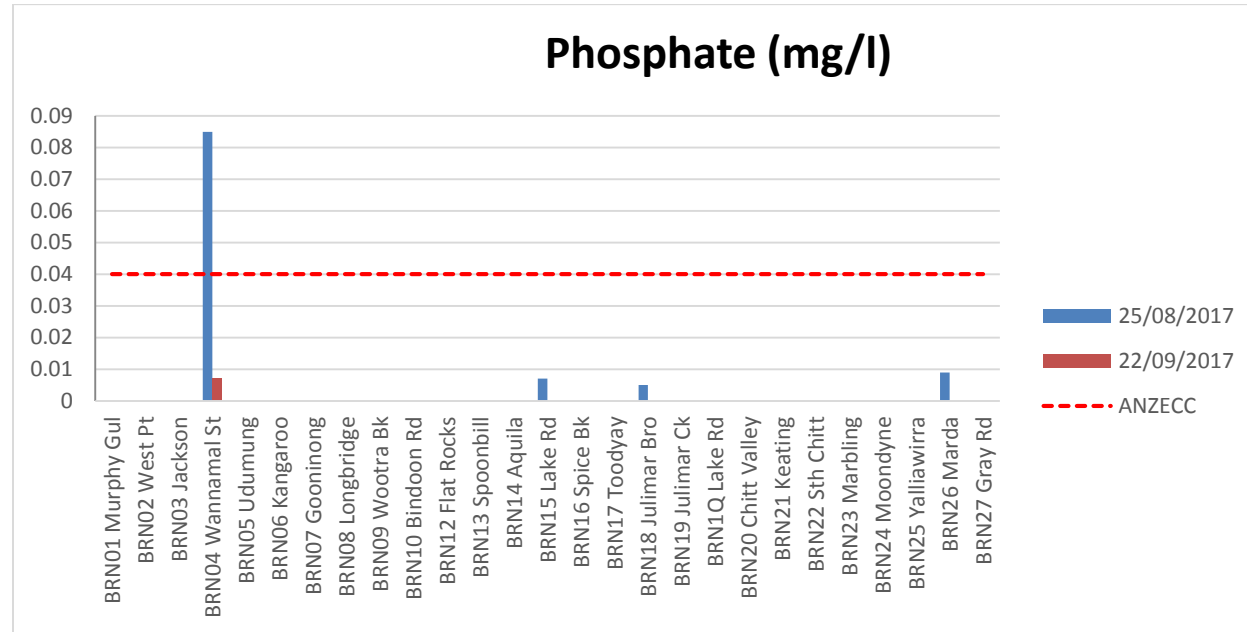
SRP concentrations in surface water within the Brockman catchment were below the ANZECC water quality guideline for lowland river systems value of 0.04mg/L at all sites and below the Limit of Reporting (LOR) at most sampling sites on both sampling occasions (

Brockman River Catchment Water Quality Monitoring Snapshot August & September 2017



\*blanks represent no sample taken

Figure 13).



\*blanks represent no sample taken

**Figure 13: Filterable Reactive Phosphorus** concentrations in surface water within the Brockman River catchment 2017.

#### **6.1.4.        *Metals in surface water***

Metals are usually found naturally in aquatic ecosystems; however, in excessive amounts they are associated with toxicity and pollution. They are derived from a variety of sources such as industrial waste, refuse leachate, corrosion of pipes and roofs (McTaggart, 2002). The most common sources of metal contaminants in the Brockman are pesticides and fertiliser application. Copper, zinc and cadmium in particular are often found in fertilisers. In the Brockman catchment most metals would enter the river via surface water run-off and groundwater contamination.

Aquatic organisms have varying tolerance levels to different metals. Metals that are essential for growth can become toxic to aquatic organisms at levels beyond their tolerance. This may only be slightly higher than normal concentrations. Metals may also accumulate in fatty tissues of animals and in the human body, so repeated exposure to heavy metals can cause levels to build up to a toxic level (IEA 2003). This is known as “bioaccumulation”.

Biomagnification can result in animals at the top end of the food chain accumulating a high concentration of heavy metals even if the organisms consumed at lower levels of the food chain have acceptable levels of heavy metals. Tolerance levels of aquatic organisms to heavy metals and ability to absorb those metals can be influenced by many factors including; interaction with other metals and formation of organic complexes (e.g. with organic carbon compounds), the chemical form of the metal, dissolved oxygen levels, salinity levels, temperature and the hardness of the water.

Metals were sampled for at 8 strategically identified sites including Spoonbill (BRN13), Aquila (BRN14), Lake Road (BRN15), South Chittering Creek (BRN22), Marbling Brook (BRN23), Yalliwirra (BRN25), Gray Road (BRN27) and Jackson Rd (BRN2) in 2016.

In 2006 and 2007, heavy metal concentrations in the waters of the Brockman River catchment were well below the ANZECC guideline and Hardness-Modified Trigger Values apart from on one occasion. These heavy metals included aluminium, arsenic, iron, cadmium, chromium, copper, lead, manganese, mercury, nickel, and zinc.

From 2008 to 2015, there have been many more results that are over the ANZECC guidelines for the various metals. Aluminium and Iron have recorded values above the guideline more so than the other metals. The elevated concentrations of these metals could be a result of surrounding land use and practices including fertiliser application, soil erosion carrying heavy metals to the waterways, groundwater contamination and sub-surface flow, and the natural occurrence of these trace elements in the soil. Water hardness affects the toxicity of the heavy metals in the environment. (Appendix A).

Sites which have been tested since 2006 include Udumung (BRN5), Spoonbill (BRN13), Aquila (BRN14), Lake Rd (BRN15), Julimar/Chittering Tributary (BRN19), Chittering Valley (BRN20), Keating Rd (BRN21), South Chittering Creek (BRN22), Marbling (BRN23), Moondyne (BRN24), Yalliarwarra (BRN25), Marda Brook (BRN26), Gray Rd (BRN27) and Jackson Rd (BRN2).

## **Hardness**

Total hardness, expressed as calcium carbonate ( $\text{CaCO}_3$ ), is the combined concentration of alkali-earth metals, predominantly magnesium ( $\text{Mg}^{2+}$ ) and calcium ( $\text{Ca}^{2+}$ ), and some strontium ( $\text{Sr}^{2+}$ ). The source of this hardness is possibly through the weathering of granite. Hardness levels range from <60mg/L (soft) to >400 mg/L (extremely hard).

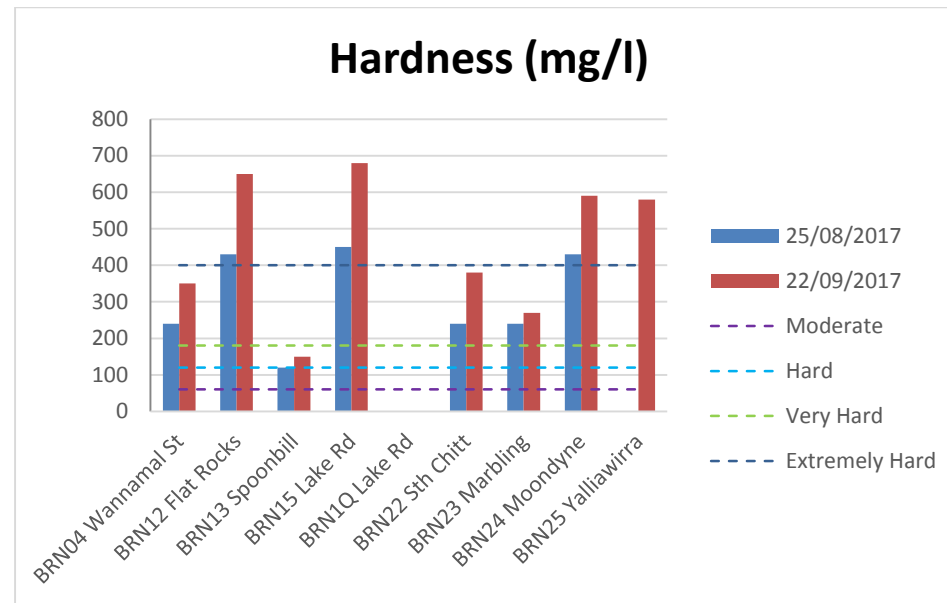
Water hardness can have an ameliorating effect on the toxicity of some heavy metals including cadmium, copper, zinc, lead, nickel and chromium, as the

calcium and carbonate ions compete directly for the same uptake pathways as these metals. Water samples with higher concentrations of water hardness need to have the trigger values for these metals adjusted by a hardness-dependent algorithm or the approximate factors applied to soft water trigger values of varying water hardness provided in ANZECC and ARMCANZ (2000), (Appendix D). Refer to Table 6 for the calculated Hardness-Modified Trigger Values (HMTV) for cadmium, copper, chromium, lead, nickel and zinc. Hardness ranged between 140mg/L at Spoonbill Lake (BRN13) – hard, and 1400mg/L at Jackson Rd (BRN2) – extremely hard (Figure 14).

**Table 6:** Hardness-Modified Trigger Values (HMTV) for Cadmium, Copper, Chromium, Lead, Nickel and Zinc based on Figure 14 and Appendix D calculations.

| <b>Metal</b> | <b>ANZECC Trigger Value</b> | <b>HMTV for hard water (120 – 180).</b> | <b>HMTV for very hard water (180 – 240).</b> | <b>HMTV for extremely hard water (250 - &gt;400)</b> |
|--------------|-----------------------------|---|--|--|
| Cadmium      | 0.0002                      | 0.00084                                 | 0.0011                                       | 0.002  |
| Copper       | 0.0014                      | 0.00546                                 | 0.0072                                       | 0.0126   |
| Chromium     | 0.001                       | 0.0037                                  | 0.005  | 0.0084   |
| Nickel       | 0.011                       | 0.0429                                  | 0.057  | 0.099  |
| Lead         | 0.0034                      | 0.02584                                 | 0.04   | 0.09   |
| Zinc         | 0.008                       | 0.0312                                  | 0.04   | 0.07   |





**Figure 14:** Water Hardness sampled from surface waters within the Brockman River catchment 2017.

## **Aluminium**

Jackson Rd (BRN2), Yalliwarra (BRN25) and Gray Rd (BRN 27) were over the ANZECC guideline of 0.055mg/L on one or both occasions (Figure 17). Values ranged from 0.03mg/L at Lake Rd (BRN 15) to 1.1mg/L at Grey Rd (BRN 27). On this occasion the pH was within the guideline however alkalinity may have affected the result.

## **Iron**

There is no ANZECC guideline trigger value or environmental concern level (ECLs) available for iron in fresh water as a result of insufficient data (ANZECC and ARMCANZ, 2000). No sites were below the current Canadian guideline of 0.3mg/L on any sampling occasion (Figure 16). This guideline is advised by the ANZECC water quality guidelines to be used as an interim indicative working level for aquatic ecosystems and requires further monitoring.

## **Zinc**

All sites were below the Hardness Modified Trigger Values (HMTV) of 0.07mg/L for sites with extremely hard water, 0.0312mg/L for sites with hard water (Figure 19).

It is important to note that total zinc concentrations of less than 20mg/L in livestock drinking water is highly unlikely to be a threat to the health of livestock. Concentrations of Zinc rarely go over 0.01mg/L in natural water. Higher concentrations of Zinc can be associated with pollution from industrial wastes or corrosion of zinc coated plumbing or galvanised water tanks particularly in areas of low pH.

## **Copper**

All sites were well below the hardness-modified trigger values (HMTV) of 0.00546mg/L for hard water and 0.0126mg/L for extremely hard water. In fact all

sites were below the limit of reporting (0.001mg/L) for the August and September sampling run (Figure 18).

All sites are well below the recommended ANZECC trigger values for livestock, which are 0.5mg/L for sheep, 1mg/L for cattle, and 5mg/L for pigs and poultry (low risk) in livestock drinking water on all sampling occasions.

Copper is used in building material, electrical and heat conductors, and in household products. It is also an essential trace element; however in sufficient amounts it can be toxic.

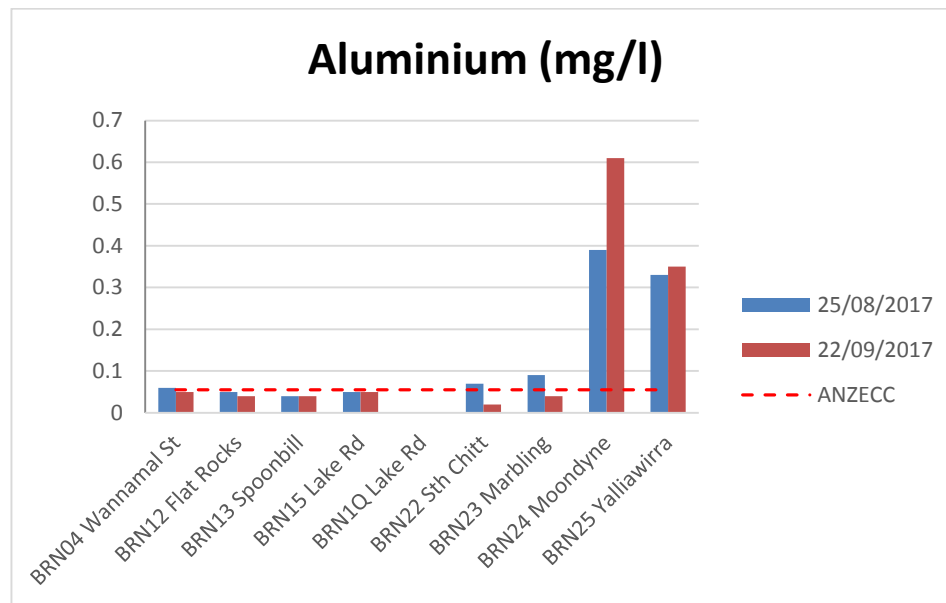
## **Nickel**

All sites were well below the hardness-modified trigger values (HMTV) of 0.057mg/L for very hard water and 0.099mg/L for extremely hard water. In fact all sites were below the ANZECC guideline of 0.011mg/L for fresh water in the south west of Western Australia on the September and October sampling occasions (Figure 18). It is important to note that nickel concentrations in livestock drinking water greater than 1mg/L may have adverse effects on animal health (ANZECC and ARMCANZ, 2000). The levels recorded in the Brockman are well below this guideline on both sampling occasions.

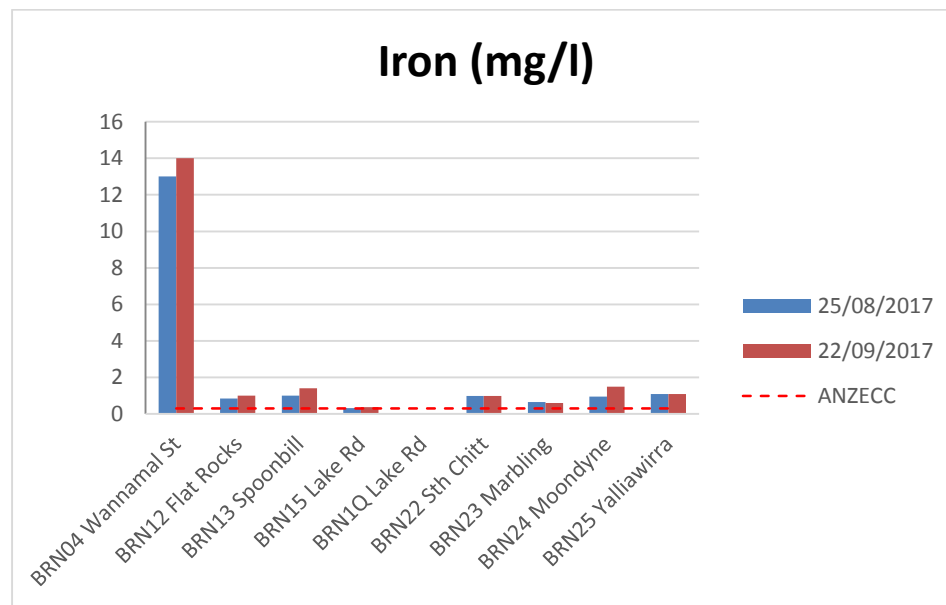
The concentration of nickel in natural waters is usually below 0.01 mg/L unless it has been contaminated by either corrosion of nickel plated plumbing, industrial waste or fallout from burning of fossil fuels.

## **Other Metals**

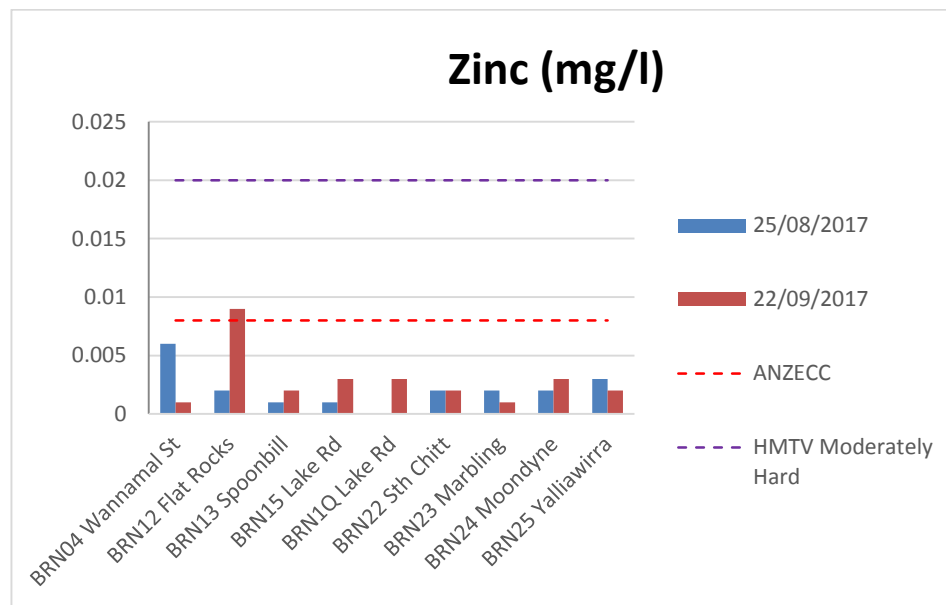
Chromium (Cr), Arsenic (As), Lead (Pb) and Mercury (Hg) all recorded concentration levels below the relative limits of reporting (LOR) and ANZECC Trigger Values on both sampling occasions.



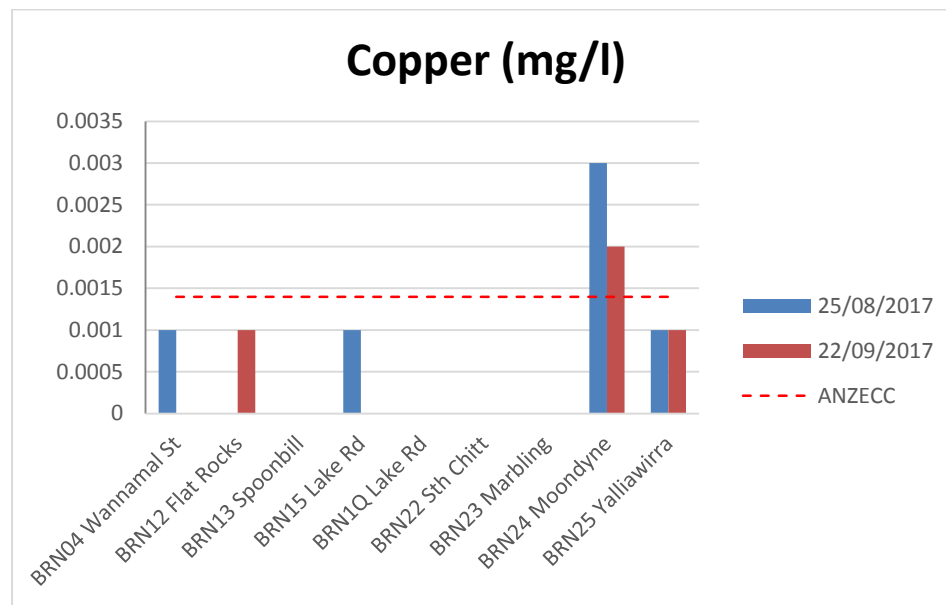
**Figure 15:** Aluminium concentrations in surface water within the Brockman River catchment 2017.



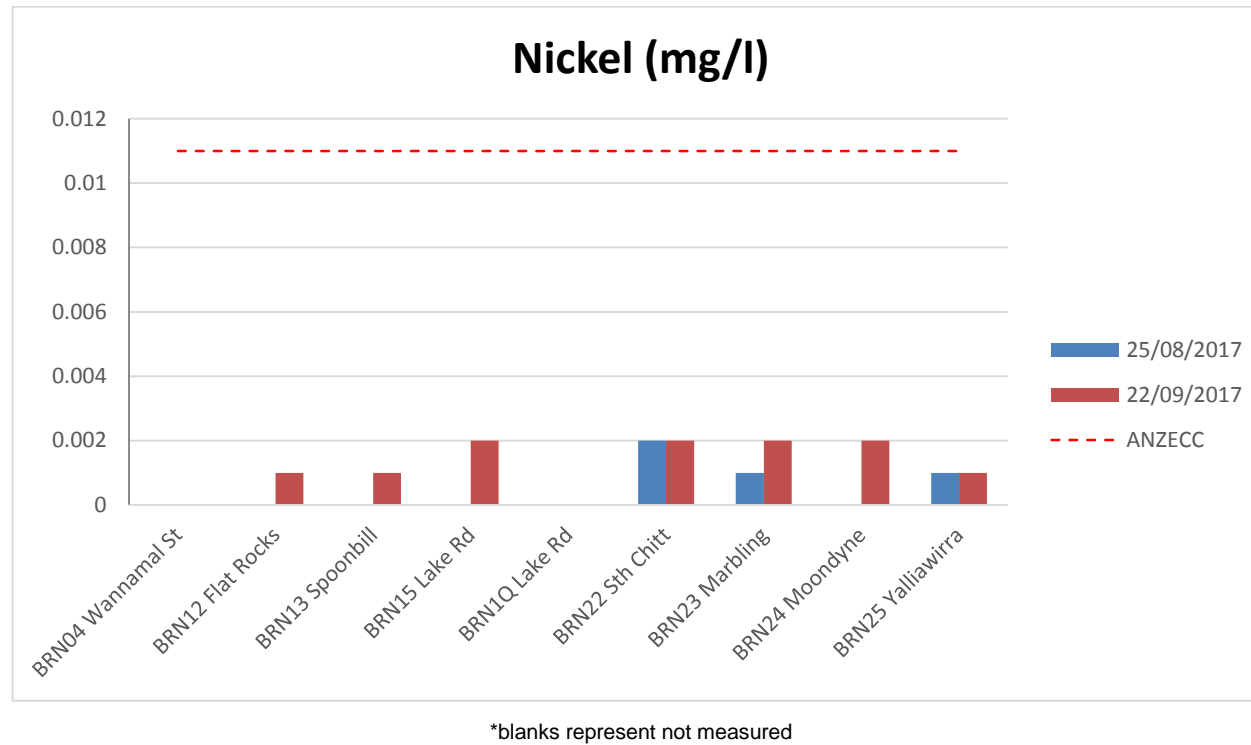
**Figure 16:** Iron concentrations in surface water within the Brockman River Catchment 2017.



**Figure 17:** Zinc concentrations in surface water within the Brockman River catchment 2017.



**Figure 18:** Copper concentrations in surface water within the Brockman River catchment 2017.



**Figure 19:** Nickel concentrations in surface water within the Brockman River catchment 2017.



## **1. Comparison with previous results**

The Brockman River Catchment Water Quality Monitoring Snapshot September 2006, was the first snapshot developed by EBICG for this catchment. Conductivity data of the sampling sites listed in Table 6 have been collected on a regular basis since 2006 by officers at the Chittering Landcare Centre. This data was collected using WTW EC meters and represents the water quality at the time of sampling only. This provides some certainty in comparing the data over the years of sampling. Table 7 provides the salinity (conductivity) of the subcatchments within the Brockman River catchment between 2006 and 2017.

As stated in previous 'Water Quality Snapshots', there has been a steady increase in the salinisation of waterways within the Brockman River catchment over the past six years. Table 7 shows a direct relationship between salinity and location in the catchment where the sample has been taken. Northern sampling sites have been affected the most by salinity over the years and as the river flows southwards and receives more inflow from fresh tributaries, salinity appears to reduce (Table 7). However, without flow estimates load cannot be calculated so it is difficult to pinpoint areas of high salt input within the catchment and subsequent sites for remediation works (Angell, 2000).

pH levels in the Brockman River catchment appear to remain relatively stable, although slightly alkaline, over the years of sampling.

Nutrient concentrations in the Brockman River catchment are generally not of concern; however concentrations of Total Nitrogen (TN), Total Oxidised Nitrogen (NO<sub>x</sub>-N/TON), Filterable Organic Nitrogen, Ammonia (NH<sub>3</sub>N), and Total Phosphorus (TP) have been recorded at various sites above the ANZECC guidelines on a number of sampling occasions. This is of concern and should continue to be monitored to determine whether or not the Brockman River catchment is contributing significant levels of nutrients to the Avon/Swan River.

**Table 7: Sub catchment salinity measurement based on seven years of data between 2006 and 2015.**

| <b>Site Name</b>                   | <b>Salinity Measurement</b> |
|------------------------------------|-----------------------------|
| BRN1 Murphy Gully Road             | Saline                      |
| BRN2 Jackson Road                  | Brackish-Saline             |
| BRN3 West Point Creek              | Brackish-Saline             |
| BRN4 Wannamal South                | Brackish                    |
| BRN5 Udumung Creek                 | Brackish                    |
| BRN6 Kangaroo Gully Creek          | Brackish                    |
| BRN7 Romany Creek                  | Brackish                    |
| BRN8 Longbridge Creek              | Brackish                    |
| BRN9 Wootra Brook                  | Brackish                    |
| BRN10 Bindoon River                | Brackish                    |
| BRN11 Cresthill Road               | Brackish                    |
| BRN12 Flat Rocks Creek             | Brackish                    |
| BRN13 Spoonbill Lake               | Marginal                    |
| BRN14 Aquila                       | Brackish                    |
| BRN15 Lake Road                    | Brackish                    |
| BRN16 Spice Brook                  | Brackish                    |
| BRN17 Toodyay Creek                | Brackish                    |
| BRN18 Julimar/Chittering Bridge    | Brackish                    |
| BRN19 Julimar/Chittering Tributary | Brackish                    |
| BRN20 Chittering Valley            | Marginal                    |
| BRN21 Keating Road                 | Brackish                    |
| BRN22 South Chittering Creek       | Marginal                    |
| BRN23 Marbling Brook               | Marginal                    |
| BRN24 Moondyne                     | Brackish                    |
| BRN25 Yalliwirra                   | Brackish                    |
| BRN26 Marda Brook                  | Marginal                    |
| BRN27 Grey Road Bridge             | Brackish                    |

*NB: The ANZECC guideline for conductivity in Lowland Rivers is 0.12mS/cm to 0.3mS/cm.*

## 2. Recommendations

- Continue the sampling and analysis monitoring program within the Brockman River catchment and add new sampling sites where nutrient transport or salinity is expected to be significant, or to increase the number of sampling events as funding permits.
- Identify areas of future rehabilitation, revegetation and waterway protection based on the results of the sampling program.
- Identify subcatchments which contribute significant amounts of saline water, nutrients or metals to the Brockman River, determine possible causes and conduct remediation works.
- Subcatchments have been prioritised according to water quality, surrounding land use, and influence on their immediate environment. See table below. Sub catchment scale monitoring/progress reports will be conducted on one priority sub catchment per year, commencing with priority 1 (Spoonbill) and working towards priority 14 (Keating). It is the aim of these reports to compliment existing water quality monitoring snapshots; utilise monitoring data to determine existing trends over the years of sampling; to determine the impacts of on-ground works and monitor their success; and to provide detailed information on the priority subcatchments of the Brockman River catchment.

| Priority | Sub-catchment    |
|----------|------------------|
| 1        | Spoonbill        |
| 2        | Marbling         |
| 3        | Udumung          |
| 4        | West Point       |
| 5        | Flat Rocks       |
| 6        | Blue Plains      |
| 7        | Chittering Creek |
| 8        | Marda Brook      |
| 9        | Murphy Gully     |

Brockman River Catchment Water Quality Monitoring Snapshot August & September 2017

|    |                |
|----|----------------|
| 10 | Romany Creek   |
| 11 | Kangaroo Gully |
| 12 | Longbridge     |
| 13 | Wootra         |
| 14 | Keating        |

### 3. References

Allen, G.R. Midgley, S.H. & Allen, M. (2002) *Field guide to the freshwater fishes of Australia*. Western Australian Museum, Perth.

Angell, K. (1997). *Salinity survey in the Shire of Chittering*. Agriculture Western Australia.

ANZECC and ARMCANZ (2000). *National Water Quality Management Strategy: Australia and New Zealand Water Quality Guidelines for Fresh and Marine Water Quality*. Australian and New Zealand Conservation Council, Agriculture and Resource Management Council of Australia and New Zealand.

Australian Bureau of Statistics. (2001). *Shire of Chittering: a profile of the local government area*. Australian Bureau of Statistics, Western Australian Office. Commonwealth of Australia.

Aquatic Research Laboratory. (2005). *Ecological Water Requirements of the Marbling Brook – Intermediary Assessment*. School of Animal Biology, University of Western Australia, Perth, Western Australia.

Banfield, K. (2001). *Management Strategies for Nutrient and Sediment Loss in the Ellen Brook Catchment: With an Introduction to constructed wetlands*. Department of Agriculture. Western Australia.

Berowra Catchment Management Committee. (1997). *Berowra Creek Water Quality Management Strategy*. Department of Urban Affairs and Planning. New South Wales.

Booth, C.A. (1999). *Guide to good water*. Clean Up Australia Ltd. Glebe, New South Wales.

Bureau of Meteorology (2011) *Rainfall data*. [www.bom.gov.au](http://www.bom.gov.au) (accessed February 2011)

Buchanan, B. (1997). *Wannamal: a history*. Curtin University of Technology, Perth.

Buchanan, B. (2000). *Chittering: exploration to shire*. Curtin University of Technology, Perth.

Chittering Landcare Group. (2009). *Bindoon Defence Training Area: Water Quality Monitoring Snapshot; August and October 2009*. (unpublished).

Churchward, H.M. and McArthur, W.M. (1980) *Landforms and soil of the Darling system, Western Australia, Atlas of resources Darling system, Western Australia*. Department of Conservation and Environment, Perth.

Connell, S., & Ebert, M. (2001) *Vegetation in the Brockman River catchment*. (unpublished)

Conservation and Land Management. (1999). *Interim guidelines for nature reserves in the Shire of Chittering*. CALM, Mundaring.

Cook, D. & Hatherly, C. (1997). *Agriculture statistical overview 96/97 - Shire of Chittering*. Sustainable Rural Development Program. Agriculture Western Australia.

Coorong & Districts Local Action Plan Steering Committee. (1997). *Coorong and districts local action plan. Protecting agriculture and natural resources*. Coorong District Council. South Australia.

Department of Defence. (1998) *Environmental management plan: Bindoon training area*. Department of Defence Infrastructure division, Fremantle. Western Australia.

*Draft Ellen Brook Catchment Management Plan (DEBCMP)*. (2001). PPK Environment and Infrastructure (Australia) Pty Ltd.

Ellen Brook Integrated Catchment Group (EBICG) (2000). *Ellen Brook Catchment Management Plan*. Draft. PPK environment and Infrastructure (Aust) Pty Ltd. Perth.

Environment Australia (2001) *A directory of important wetlands in Australia. 3<sup>rd</sup> Edition*. Department of the Environment and Heritage, Canberra.

Environmental Protection Authority (2002). *Revised Environmental Quality Criteria Reference Document (Cockburn Sound) – a supporting document to the draft Environmental Protection (Cockburn Sound) Policy 2002*.

Environmental Protection Authority (2002). *Revised Draft Environmental Protection (Cockburn Sound) Policy 2002 – report to the minister for the environment as required under section 28 of the Environmental Protection Act, 1986*.

Evangelisti and Associates (1998). *Environmental input into Structure, land capability and catchment management within the Ellen Brook catchment and surrounds. Shire of Chittering land capability and management study. Part 1: Working paper and Part 2: Study report..* Western Australian Planning Commission. Perth.

Frapple, P.A. (1975). *Land use and water quality survey of the Pacminex lease area*. Department of Agriculture, Western Australia.

Fulwood, Z. (2001) *The identification and amelioration of salinity in the Brockman River catchment*. Honours thesis, University of Western Australia.

Graham, D. (2001) *The Brockman River Valley - an area of abundance for at least 38,000 years*. Unpublished.

Hedde, E.M., Loneragan, O.W., & Havel, J.J. (1980) Vegetation complexes of the Darling system, Western Australia. In *Atlas of natural resources, Darling System, Western Australia*. Department of Conservation and Environment, Perth, Western Australia. pp 37-72.

Horwood, W. (1997). *Snapshot of Water Quality in Ellen Brook October 1996: Prepared for the Ellen Brook Integrated Catchment Group and Swan River Trust*. Swan River Trust. Western Australia.

IEA (Institute of Engineers Australia) (2003). *Australian Runoff Quality Guidelines (Draft)*. Institute of Engineers Australia, Australia.

Kellogg, Brown & Root Pty Ltd (2003). *Water Study for the Shire of Chittering* Perth, Western Australia.

King, P.D. & Wells. M.R. (1990) *Darling Range rural land capability study*. Department of Agriculture, Perth, Western Australia

Lloyd, B. (2000). *Degradation in the Brockman River and Ellen Brook Catchments, Western Australia*. Department of Agriculture Western Australia. Perth.

Lovett, S. & Price, P. (Eds) (1999) *Riparian land management technical guidelines. Volume one: principals of sound management*. Land and Water Research Development Corporation (LWRRDC). Canberra.

Lovett, S. & Price, P. (Eds) (1999) *Riparian land management technical guidelines. Volume two: Legislation relating to riparian management*. Land and Water Research Development Corporation (LWRRDC). Canberra.

McTaggart A, 2002. *A Community Guideline to Surface Water Quality Investigations – Version 1.0*. Water and Rivers Commission Aquatic Science Branch.

Moore, G. (1998) *Natural Resources (Agriculture) – Situation statement for the Avon River Basin*. Agriculture Western Australia, on behalf of the Swan-Avon ICM and Central SRD program.

Morgan, D., Gill, H., & Potter, I. (1996) *The distribution of freshwater fish in the southwestern corner of Australia*. Report WRT4. Water and Rivers Commission. Perth.

Mount Lofty Ranges Interim Integrated Natural Resource Management Group. (2002). *Draft Integrated Natural Resource Management Plan for the Mount Lofty Ranges and Greater Adelaide Region*. Adelaide.

Meffe, G.K. & Carroll, C.R. (1994). *Principles of conservation biology*. Sinauer Associates. Sunderland, Massachusetts.

Oliver, K. (2001) *Shire of Chittering roadside vegetation management plan*. Honours Thesis, Curtin University of Technology.

Olsen, G. and Skitmore, E. (1991) *State of the rivers of the southwest drainage division*. Western Australian Water Resources Council.

Pen, L. J. (1999) *Managing our rivers. A guide to the nature and management of the streams of southwest Western Australia*. Water and Rivers Commission, Perth. Western Australia.

Pen, L.J. & Scott, M. (1999) *Foreshore condition assessment in farming areas of southwest Western Australia*. Report no. RR3. Water and Rivers Commission, Western Australia.

Porritt, S. (1974). *Land systems of the Brockman River catchment*. Department of Agriculture Western Australia.

Rutherford, I.D., Jerie, K. & Marsh, N. (2000). *A rehabilitation manual for Australian streams. Volume one*. Cooperative Research Centre for Catchment Hydrology. Department of Geography and Environmental Studies, University of Melbourne. Melbourne.

Rutherford, I.D., Jerie, K. & Marsh, N. (2000). *A rehabilitation manual for Australian streams. Volume two*. Cooperative Research Centre for Catchment Hydrology. Department of Geography and Environmental Studies, University of Melbourne. Melbourne.

Saunders, D.A. & Ingram, J.A. (1987) Factors affecting survival of breeding populations of Carnaby's cockatoo *Calyptorhynchus funereus latirostris* in remnants of native vegetation. In D.A. Saunders, G.W. Arnold, A.A. Burbridge



and A.J.M. Hopkins (Eds). *Nature conservation: the role of remnants of native vegetation*. Surrey Beatty and Sons, Sydney.

Shire of Chittering (2001) *Local planning strategy*. Bindoon, Western Australia.

Shire of Chittering (2001) *Town planning scheme number 6. District zoning scheme*. Bindoon, Western Australia.

Shire of Chittering (1999). *Planning strategy for the Shire of Chittering*. Bindoon, Western Australia.

Smith, G.T. (1987) The changing environment for birds in the southwest of Western Australia: some management implications. In D.A. Saunders, G.W. Arnold, A.A. Burbridge and A.J.M. Hopkins (Eds). *Nature conservation: the role of remnants of native vegetation*. Surrey Beatty and Sons, Sydney.

Storr, G.M., Smith, L.A., Johnstone, R.E. (1986) *Snakes of Western Australia*. Western Australian Museum, Perth.

Storr, G.M., Smith, L.A., Johnstone, R.E. (1990) *Lizards of Western Australia III: Geckos and Pygopods*. Western Australian Museum, Perth.

Swan Catchment Council (2002) *The Swan region- a natural resource management strategy*. Swan Catchment Council, Perth, Western Australia.

Swan River Trust. (1999). *Swan-Canning Cleanup Program. Action Plan*. Water and rivers Commission, Perth, Western Australia.

Tindale, N. (1974). *Aboriginal tribes of Australia*. University of California Press. Berkeley.

Water and Rivers Commission (2001) *Groundwater information and management options for the Brockman River catchment*. (unpubl.) Perth, Western Australia.

Waters and Rivers Commission (2000) Wilson Inlet report to the community. Summary of the Wilson Inlet catchment monitoring program. Waters and Rivers Commission and Wilson Inlet Management Authority, WA.

Water and Rivers Commission (2001) *Foreshore assessment of the Brockman River*. (unpubl.) Perth, Western Australia.

Water and Rivers Commission (1999) *A guide to the nature, protection, rehabilitation and long-term management of waterways in Western Australia*. Water and Rivers Commission River Restoration River Restoration Manual. Perth, Western Australia.

Water and Rivers Commission (2001) *Bremer River and Devil's Creek river action plan*. Water and Rivers Commission Management Series Report No. WRM 25. Perth, Western Australia.

Water and Rivers Commission (2000) *Water notes 1 to 29*. Water and Rivers Commission. Perth, Western Australia.

Water and Rivers Commission (2000) *Water facts 1 to 16*. Water and Rivers Commission. Perth, Western Australia.

Water and Rivers Commission (2003). *Natural Resource Management Plan for the Brockman River Catchment*. Water and Rivers Commission, Water Resource Management Series, No WRM 33.

Water Resources Directorate (1993) *Gingin groundwater area management plan*. Report No. WG160. Groundwater and Environment Branch. Water Authority of Western Australia. Perth.

Weaving, S. (1999). *Native vegetation handbook for the Shire of Toodyay*. Spatial Resource Information Group. Agriculture Western Australia and Greening Western Australia.

Western Australian Planning Commission (1999) *Draft Avon Arc sub-regional strategy. Urban services and infrastructure audit*. Perth. Western Australia.

Western Australian Planning Commission. (2000). *North-east Corridor extension Strategy*. Western Australian Planning Commission, Perth.

Wilde, S.A. & Low, G.H. (1978) *Geological survey of Western Australia, 1:250 000 geological series explanatory notes*. Perth, Western Australia.

## Appendix A: Water Quality Results (raw)

### *Physical Parameters*

| Site Number | Site Name            | Date       | Temperature (°C) | pH   | Conductivity (mS/cm) |
|-------------|----------------------|------------|------------------|------|----------------------|
| 1           | Murphy Gully         | 24/08/2017 | 18.3             | 7.67 | 9.61                 |
| 1           | Murphy Gully         | 21/09/2017 | 19.5             | 8.23 | 13.17                |
| 2           | Jackson Rd           | 24/08/2017 | 16.5             | 7.18 | 11.23                |
| 2           | Jackson Rd           | 21/09/2017 | 19.8             | 8.25 | 11.54                |
| 3           | West Point Creek     | 24/08/2017 | 18.2             | 7.58 | 7.05                 |
| 3           | West Point Creek     | 21/09/2017 | 19               | 7.68 | 8.65                 |
| 4           | Wannamal Sth         | 24/08/2017 | 16.9             | 6.8  | 1.87                 |
| 4           | Wannamal Sth         | 21/09/2017 | 19.2             | 6.85 | 2.75                 |
| 5           | Udumung Creek        | 24/08/2017 | 14.7             | 7.45 | 3.75                 |
| 5           | Udumung Creek        | 21/09/2017 | 18               | 7.95 | 4.43                 |
| 6           | Kangaroo Gully       | 24/08/2017 | 17.8             | 7.44 | 3.32                 |
| 6           | Kangaroo Gully       | 21/09/2017 | 19.3             | 7.65 | 4.21                 |
| 7           | Romany Creek         | 24/08/2017 | 15               | 7.56 | 3.25                 |
| 7           | Romany Creek         | 21/09/2017 | 18               | 7.82 | 3.83                 |
| 8           | Longbridge           | 24/08/2017 | 16.6             | 7.57 | 4.79                 |
| 8           | Longbridge           | 21/09/2017 | 19.1             | 7.61 | 6.16                 |
| 9           | Wootra Brook         | 24/08/2017 | 16.3             | 7.66 | 4.43                 |
| 9           | Wootra Brook         | 21/09/2017 | 19.2             | 8.01 | 5.18                 |
| 10          | Bindoon River        | 24/08/2017 | 17.2             | 4.51 | 2.27                 |
| 10          | Bindoon River        | 21/09/2017 | 19               | 7.95 | 6.07                 |
| 12          | Flat Rocks           | 24/08/2017 | 16.1             | 6.82 | 4.3                  |
| 12          | Flat Rocks           | 21/09/2017 | 18.8             | 7.44 | 5.63                 |
| 13          | Spoonbill            | 24/08/2017 | 13.8             | 6.96 | 1.32                 |
| 13          | Spoonbill            | 21/09/2017 | 18.5             | 7.14 | 1.28                 |
| 14          | Aquila               | 24/08/2017 | 15.2             | 6.95 | 2.28                 |
| 14          | Aquila               | 21/09/2017 | 18.2             | 6.57 | 3.69                 |
| 15          | Lake Chittering      | 24/08/2017 | 15.5             | 6.84 | 3.67                 |
| 15          | Lake Chittering      | 21/09/2017 | 19.6             | 7.62 | 4.48                 |
| 16          | Spice Brook          | 24/08/2017 | 15.2             | 7.21 | 2.22                 |
| 16          | Spice Brook          | 21/09/2017 | 18.5             | 7.58 | 4.11                 |
| 17          | Toodyay Creek        | 24/08/2017 | 14.4             | 7.09 | 2.24                 |
| 17          | Toodyay Creek        | 21/09/2017 | 17.8             | 7.11 | 3.39                 |
| 18          | Julimar/Chitt Bridge | 24/08/2017 | 14.7             | 6.89 | 3.89                 |
| 18          | Julimar/Chitt Bridge | 21/09/2017 | 19.6             | 7.74 | 4.47                 |

Brockman River Catchment Water Quality Monitoring Snapshot August & September 2017

| Site Number | Site Name         | Date       | Temperature (°C) | pH   | Conductivity (mS/cm) |
|-------------|-------------------|------------|------------------|------|----------------------|
| 19          | Julimar/Chit Trib | 24/08/2017 | 13.8             | 6.73 | 3.72                 |
| 19          | Julimar/Chit Trib | 21/09/2017 | 17.5             | 6.97 | 5.67                 |
| 20          | Chittering Valley | 24/08/2017 | 14               | 7.09 | 1.89                 |
| 20          | Chittering Valley | 21/09/2017 | 18.8             | 7.35 | 2.3                  |
| 21          | Keating Rd        | 24/08/2017 | 13.8             | 6.92 | 3.33                 |
| 21          | Keating Rd        | 21/09/2017 | 18.5             | 7.36 | 5.01                 |
| 22          | Wilson Rd         | 24/08/2017 | 13               | 7.66 | 2.16                 |
| 22          | Wilson Rd         | 21/09/2017 | 17.3             | 7.32 | 2.85                 |
| 23          | Marbling          | 24/08/2017 | 14.4             | 7.67 | 2.36                 |
| 23          | Marbling          | 21/09/2017 | 17.8             | 7.53 | 2.53                 |
| 24          | Moondyne          | 24/08/2017 | 13.4             | 7.05 | 3.14                 |
| 24          | Moondyne          | 21/09/2017 | 20.7             | 7.67 | 4.29                 |
| 25          | Yalliwirra        | 24/08/2017 |                  |      |                      |
| 25          | Yalliwirra        | 21/09/2017 | 18.7             | 7.68 | 4.18                 |
| 26          | Marda Brook       | 24/08/2017 | 12.1             | 6.86 | 1.16                 |
| 26          | Marda Brook       | 21/09/2017 | 18.9             | 7.57 | 1.29                 |
| 27          | Grey Rd           | 24/08/2017 | 15.2             | 7.46 | 3.88                 |
| 27          | Grey Rd           | 21/09/2017 | 19.6             | 7.88 | 4.9                  |

## Nutrients

| Site              | Date       | Total Nitrogen | NOx as N | Ammonia | Dissolved Organic Nitrogen | Total Phosphorus | Phosphat |
|-------------------|------------|----------------|----------|---------|----------------------------|------------------|----------|
| ANZECC            |            | 1.2            | 0.15     | 0.08    | 0.04                       | 0.65             | 0.04     |
| BRN01 Murphy Gul  | 25/08/2017 | 3              | 1.5      | <0.005  | 1.3                        | 0.03             | <0.005   |
| BRN01 Murphy Gul  | 22/09/2017 | 1.1            | <0.005   | 0.013   | 0.2                        | 0.04             | <0.005   |
| BRN02 West Pt     | 25/08/2017 | 2.6            | 0.69     | 0.017   | 1.8                        | 0.05             | <0.005   |
| BRN02 West Pt     | 22/09/2017 | 1.4            | 0.033    | 0.072   | 0.1                        | 0.05             | <0.005   |
| BRN03 Jackson     | 25/08/2017 | 2.1            | 0.67     | 0.01    | 1.1                        | 0.03             | <0.005   |
| BRN03 Jackson     | 22/09/2017 | 1.7            | <0.005   | 0.031   | <0.1                       | 0.05             | <0.005   |
| BRN04 Wannamal St | 25/08/2017 | 4.4            | <0.05    | <0.005  | 3.9                        | 0.11             | 0.085    |
| BRN04 Wannamal St | 22/09/2017 | 2.2            | <0.005   | <0.005  | 0.3                        | <0.01            | 0.007    |
| BRN05 Udumung     | 25/08/2017 | 3.4            | 2.4      | <0.005  | 1                          | 0.02             | <0.005   |
| BRN05 Udumung     | 22/09/2017 | 1.5            | 0.71     | <0.005  | <0.1                       | 0.02             | <0.005   |
| BRN06 Kangaroo    | 25/08/2017 | 1.9            | 1.1      | <0.005  | 0.7                        | 0.01             | <0.005   |
| BRN06 Kangaroo    | 22/09/2017 | 1              | 0.34     | 0.023   | <0.1                       | 0.02             | <0.005   |
| BRN07 Gooninong   | 25/08/2017 | 5.8            | 4.2      | <0.005  | 1.1                        | 0.01             | <0.005   |
| BRN07 Gooninong   | 22/09/2017 | 2.8            | 2.3      | <0.005  | <0.1                       | 0.01             | <0.005   |
| BRN08 Longbridge  | 25/08/2017 | 4.6            | 3.1      | <0.005  | 1.2                        | 0.02             | <0.005   |
| BRN08 Longbridge  | 22/09/2017 | 1.9            | 1.1      | 0.073   | <0.1                       | 0.03             | <0.005   |
| BRN09 Wootra Bk   | 25/08/2017 | 3.1            | 2        | <0.005  | 1                          | 0.02             | <0.005   |
| BRN09 Wootra Bk   | 22/09/2017 | 1.2            | 0.47     | 0.027   | <0.1                       | 0.03             | <0.005   |
| BRN10 Bindoon Rd  | 25/08/2017 | 0.6            | 0.021    | <0.005  | 0.5                        | 0.02             | <0.005   |
| BRN10 Bindoon Rd  | 22/09/2017 | 0.8            | 0.12     | <0.005  | <0.1                       | 0.02             | <0.005   |
| BRN12 Flat Rocks  | 25/08/2017 | 1.8            | 0.9      | 0.007   | 0.7                        | 0.02             | <0.005   |
| BRN12 Flat Rocks  | 22/09/2017 | 0.8            | 0.24     | <0.005  | <0.1                       | 0.02             | <0.005   |
| BRN13 Spoonbill   | 25/08/2017 | 0.8            | <0.005   | <0.005  | 0.7                        | 0.01             | <0.005   |
| BRN13 Spoonbill   | 22/09/2017 | 0.6            | 0.007    | <0.005  | <0.1                       | <0.01            | <0.005   |
| BRN14 Aquila      | 25/08/2017 | 0.7            | 0.04     | <0.005  | 0.5                        | 0.02             | <0.005   |
| BRN14 Aquila      | 22/09/2017 | 0.6            | 0.007    | 0.01    | <0.1                       | 0.02             | <0.005   |
| BRN15 Lake Rd     | 25/08/2017 | 2.6            | 1.2      | 0.04    | 1.2                        | 0.04             | 0.007    |
| BRN15 Lake Rd     | 22/09/2017 | 0.9            | 0.06     | 0.019   | <0.1                       | 0.04             | <0.005   |
| BRN16 Spice Bk    | 25/08/2017 | 1              | 0.44     | <0.005  | 0.6                        | 0.02             | <0.005   |
| BRN16 Spice Bk    | 22/09/2017 | 0.7            | 0.058    | 0.009   | <0.1                       | 0.02             | <0.005   |
| BRN17 Toodyay     | 25/08/2017 | 1.3            | 0.61     | 0.006   | 0.7                        | 0.02             | <0.005   |
| BRN17 Toodyay     | 22/09/2017 | 0.6            | 0.074    | 0.012   | <0.1                       | 0.02             | <0.005   |
| BRN18 Julimar Bro | 25/08/2017 | 2.4            | 1.2      | 0.042   | 1.2                        | 0.03             | 0.005    |
| BRN18 Julimar Bro | 22/09/2017 | 0.9            | 0.075    | 0.021   | <0.1                       | 0.03             | <0.005   |
| BRN19 Julimar Ck  | 25/08/2017 | 0.9            | 0.4      | <0.005  | 0.5                        | 0.01             | <0.005   |

Brockman River Catchment Water Quality Monitoring Snapshot August & September 2017

| Site               | Date       | Total Nitrogen | NOx as N | Ammonia | Dissolved Organic Nitrogen | Total Phosphorus | Phosphat |
|--------------------|------------|----------------|----------|---------|----------------------------|------------------|----------|
| BRN19 Julimar Ck   | 22/09/2017 | 0.5            | <0.005   | <0.005  | <0.1                       | 0.02             | <0.005   |
| BRN1Q Lake Rd      | 22/09/2017 | <0.1           | <0.005   | <0.005  | <0.1                       | <0.01            | <0.005   |
| BRN20 Chitt Valley | 25/08/2017 | 2.5            | 0.74     | <0.005  | 0.8                        | 0.06             | <0.005   |
| BRN20 Chitt Valley | 22/09/2017 | 0.6            | 0.058    | <0.005  | <0.1                       | 0.01             | <0.005   |
| BRN21 Keating      | 25/08/2017 | 1.1            | 0.42     | <0.005  | 0.6                        | 0.01             | <0.005   |
| BRN21 Keating      | 22/09/2017 | 0.7            | 0.022    | <0.005  | <0.1                       | 0.02             | <0.005   |
| BRN22 Sth Chitt    | 25/08/2017 | 1              | 0.32     | <0.005  | 0.6                        | 0.01             | <0.005   |
| BRN22 Sth Chitt    | 22/09/2017 | 0.6            | <0.005   | <0.005  | <0.1                       | <0.01            | <0.005   |
| BRN23 Marbling     | 25/08/2017 | 1.3            | 0.6      | 0.011   | 0.6                        | 0.01             | <0.005   |
| BRN23 Marbling     | 22/09/2017 | 0.6            | 0.29     | <0.005  | <0.1                       | 0.01             | <0.005   |
| BRN24 Moondyne     | 25/08/2017 | 2.2            | 0.99     | 0.028   | 1.1                        | 0.03             | <0.005   |
| BRN24 Moondyne     | 22/09/2017 | 0.9            | 0.074    | 0.026   | <0.1                       | 0.04             | <0.005   |
| BRN25 Yalliawirra  | 22/09/2017 | 0.8            | 0.087    | 0.018   | <0.1                       | 0.03             | <0.005   |
| BRN26 Marda        | 25/08/2017 | 0.8            | 0.18     | <0.005  | 0.5                        | 0.02             | 0.009    |
| BRN26 Marda        | 22/09/2017 | 0.6            | 0.057    | <0.005  | <0.1                       | 0.01             | <0.005   |
| BRN27 Gray Rd      | 25/08/2017 | 3.2            | 1.9      | <0.005  | 1.2                        | 0.03             | <0.005   |
| BRN27 Gray Rd      | 22/09/2017 | 1.2            | 0.33     | 0.024   | <0.1                       | 0.03             | <0.005   |

Note NT means not tested at this time

# Brockman River Catchment Water Quality Monitoring Snapshot August & September 2017

## Metals

| Site                 | Date       | Aluminium<br>- Total<br>(mg/l) | Arsenic -<br>Total<br>(mg/l) | Cadmium<br>- Total<br>(mg/l) | Chromium<br>- Total<br>(mg/l) | Copper -<br>Total<br>(mg/l) | Iron -<br>Total<br>(mg/l) | Mercury<br>- Total<br>(mg/l) |
|----------------------|------------|--------------------------------|------------------------------|------------------------------|-------------------------------|-----------------------------|---------------------------|------------------------------|
| BRN04 Wannamal St    | 25/08/2017 | 0.06                           | 0.002                        | <0.0001                      | 0.001                         | 0.001                       | 13                        | <0.00005                     |
| BRN04 Wannamal St    | 22/09/2017 | 0.05                           | 0.002                        | <0.0001                      | 0.002                         | <0.001                      | 14                        | <0.00005                     |
| BRN12 Flat Rocks     | 25/08/2017 | 0.05                           | <0.001                       | <0.0001                      | <0.001                        | <0.001                      | 0.85                      | <0.00005                     |
| BRN12 Flat Rocks     | 22/09/2017 | 0.04                           | <0.001                       | <0.0001                      | <0.001                        | 0.001                       | 1                         | <0.00005                     |
| BRN13 Spoonbill      | 25/08/2017 | 0.04                           | <0.001                       | <0.0001                      | <0.001                        | <0.001                      | 1                         | <0.00005                     |
| BRN13 Spoonbill      | 22/09/2017 | 0.04                           | <0.001                       | <0.0001                      | <0.001                        | <0.001                      | 1.4                       | <0.00005                     |
| BRN15 Lake Rd        | 25/08/2017 | 0.05                           | <0.001                       | <0.0001                      | <0.001                        | 0.001                       | 0.32                      | <0.00005                     |
| BRN15 Lake Rd        | 22/09/2017 | 0.05                           | <0.001                       | <0.0001                      | <0.001                        | <0.001                      | 0.38                      | <0.00005                     |
| BRN1Q Lake Rd        | 22/09/2017 | <0.01                          | <0.001                       | <0.0001                      | <0.001                        | <0.001                      | <0.01                     | <0.00005                     |
| BRN22 Sth Chittering | 25/08/2017 | 0.07                           | <0.001                       | <0.0001                      | <0.001                        | <0.001                      | 0.98                      | <0.00005                     |
| BRN22 Sth Chittering | 22/09/2017 | 0.02                           | <0.001                       | <0.0001                      | <0.001                        | <0.001                      | 0.98                      | <0.00005                     |
| BRN23 Marbling       | 25/08/2017 | 0.09                           | <0.001                       | <0.0001                      | <0.001                        | <0.001                      | 0.65                      | <0.00005                     |
| BRN23 Marbling       | 22/09/2017 | 0.04                           | <0.001                       | <0.0001                      | <0.001                        | <0.001                      | 0.61                      | <0.00005                     |
| BRN24 Moondyne       | 25/08/2017 | 0.39                           | <0.001                       | <0.0001                      | <0.001                        | 0.003                       | 0.95                      | <0.00005                     |
| BRN24 Moondyne       | 22/09/2017 | 0.61                           | <0.001                       | <0.0001                      | 0.001                         | 0.002                       | 1.5                       | <0.00005                     |
| BRN25 Yalliwirra     | 25/08/2017 | 0.33                           | <0.001                       | <0.0001                      | <0.001                        | 0.001                       | 1.1                       |                              |
| BRN25 Yalliwirra     | 22/09/2017 | 0.35                           | <0.001                       | <0.0001                      | <0.001                        | 0.001                       | 1.1                       | <0.00005                     |

\* Note: '<' represents a value below the limit of reporting.

# Brockman River Catchment Water Quality Monitoring Snapshot August & September 2017

| Site                 | Date       | Nickel -<br>Total<br>(mg/l) | Lead -<br>Total<br>(mg/l) | Zinc -<br>Total<br>(mg/l) | Hardness<br>as CaCO <sub>3</sub><br>(mg/l) | Calcium -<br>Dissolved<br>Ultra<br>Low<br>(mg/l) | Magnesium<br>- Dissolved<br>Ultra Low<br>(mg/l) |
|----------------------|------------|-----------------------------|---------------------------|---------------------------|--|--|---|
| BRN04 Wannamal St    | 25/08/2017 | <0.001                      | <0.001                    | 0.006                     | 240  | 25   | 43  |
| BRN04 Wannamal St    | 22/09/2017 | <0.001                      | <0.001                    | 0.001                     | 350  | 21   | 73  |
| BRN12 Flat Rocks     | 25/08/2017 | <0.001                      | <0.001                    | 0.002                     | 430  | 21   | 93  |
| BRN12 Flat Rocks     | 22/09/2017 | 0.001                       | <0.001                    | 0.009                     | 650  | 30   | 140   |
| BRN13 Spoonbill      | 25/08/2017 | <0.001                      | <0.001                    | 0.001                     | 120  | 6.3  | 26  |
| BRN13 Spoonbill      | 22/09/2017 | 0.001                       | <0.001                    | 0.002                     | 150  | 7.3  | 31  |
| BRN15 Lake Rd        | 25/08/2017 | <0.001                      | <0.001                    | 0.001                     | 450  | 32   | 90  |
| BRN15 Lake Rd        | 22/09/2017 | 0.002                       | <0.001                    | 0.003                     | 680  | 45   | 140   |
| BRN1Q Lake Rd        | 22/09/2017 | <0.001                      | <0.001                    | 0.003                     | <1   | <0.1   | <0.1  |
| BRN22 Sth Chittering | 25/08/2017 | 0.002                       | <0.001                    | 0.002                     | 240  | 15   | 49  |
| BRN22 Sth Chittering | 22/09/2017 | 0.002                       | <0.001                    | 0.002                     | 380  | 23   | 77  |
| BRN23 Marbling       | 25/08/2017 | 0.001                       | <0.001                    | 0.002                     | 240  | 15   | 51  |
| BRN23 Marbling       | 22/09/2017 | 0.002                       | <0.001                    | 0.001                     | 270  | 18   | 56  |
| BRN24 Moondyne       | 25/08/2017 | <0.001                      | <0.001                    | 0.002                     | 430  | 30   | 85  |
| BRN24 Moondyne       | 22/09/2017 | 0.002                       | <0.001                    | 0.003                     | 590  | 40   | 120   |
| BRN25 Yalliwirra     | 25/08/2017 | 0.001                       | <0.001                    | 0.003                     |  |  |   |
| BRN25 Yalliwirra     | 22/09/2017 | 0.001                       | <0.001                    | 0.002                     | 580  | 39   | 120   |

\* Note: '<' represents a value below the limit of reporting.



## Appendix B – Freshwater Trigger Values and Guidelines

Trigger values and guidelines for nutrient concentrations and physical properties in lowland rivers and freshwater

| Guideline  | EC<br>mSc<br>m | D0 % Sat              | pH          | Temp<br>°C | TN mg/L        | NO <sub>x</sub> N<br>mg/L | NH <sub>4</sub> N<br>mg/L | TP<br>mg/L | FRP<br>mg/L |
|--|----------------|-----------------------|-------------|------------|----------------|---------------------------|---------------------------|------------|-------------|
| ANZECC<br>Water Quality<br>Guideline –<br>Recreational<br>(2000)       | -              | >80<br>(>6.5<br>mg/L) | 6.5-<br>8.5 | -          | -              | 10                        | -                         | -          | -           |
| ANZECC<br>Water Quality<br>Trigger Values<br>- lowland river<br>(2000) | 0.12-<br>0.3   | 80-120                | 6.5-<br>8.0 | -          | 1.2            | 0.150                     | 0.08                      | 0.065      | 0.04        |
| ANZECC<br>Water Quality<br>Guidelines –<br>Freshwater<br>(1992)        | -              | >80-90<br>(>6mg/L)    | 6.5-<br>9.0 |            | <2<br>increase | 20-30                     | 0.01                      | 0.01-0.1   | -           |

### 6.1.5. *Trigger values and guidelines for toxicants (heavy metals) in freshwater*

\* Trigger values not corrected for hardness, ID = insufficient data to have ANZECC water quality guideline

| Guideline  | As<br>mg/L | Cr<br>mg/L | Cu*<br>mg/L     | Fe<br>mg/L | Mo<br>mg/L | Mn<br>mg/L | Ni*<br>mg/L    |
|--|------------|------------|-----------------|------------|------------|------------|----------------|
| ANZECC<br>Water Quality<br>Guidelines –<br>Recreational<br>(2000)        | 0.05       | 0.05       | 1               | 0.3        | ID         | 0.1        | 0.1            |
| ANZECC<br>Water Quality<br>Trigger<br>Values<br>Freshwater<br>99% (2000) | 0.001      | 0.00001    | 0.001           | ID         | ID         | 1.2        | 0.008          |
| ANZECC<br>Water Quality<br>Trigger<br>Values<br>Freshwater<br>95% (2000) | 0.024      | 0.001      | 0.0014          | ID         | ID         | 1.9        | 0.011          |
| ANZECC<br>Water Quality<br>Trigger<br>Values<br>Freshwater<br>90% (2000) | 0.094      | 0.006      | 0.0018          | ID         | ID         | 2.5        | 0.013          |
| ANZECC<br>Water Quality<br>Trigger<br>Values<br>Freshwater<br>80% (2000) | 0.360      | 0.04       | 0.0025          | ID         | ID         | 3.6        | 0.017          |
| ANZECC<br>Water Quality<br>Guidelines –<br>Freshwater<br>(1992)          | 0.05       | 0.01       | 0.002-<br>0.005 | ID         | ID         | ID         | 0.015-<br>0.15 |
| Limit of<br>reporting  | 0.001      | 0.001      | 0.001           | 0.01       | 0.005      | 0.001      | 0.001          |

### ***Trigger values and guidelines for toxicants (heavy metals) in freshwater***

\* Trigger values not corrected for hardness, ID = insufficient data to have ANZECC water quality guideline

| <b>Guideline</b>  | <b>Pb* mg/L</b> | <b>Sn</b> | <b>Sr mg/L</b> | <b>Ti mg/L</b> | <b>V mg/L</b> | <b>Zn* mg/L</b> |
|---|-----------------|-----------|----------------|----------------|---------------|-----------------|
| ANZECC Water Quality Guidelines – Recreational (2000)     | 0.05            | ID        | ID             | ID             | ID            | 5               |
| ANZECC Water Quality Trigger Values Freshwater 99% (2000) | 0.001           | ID        | ID             | ID             | ID            | 0.0024          |
| ANZECC Water Quality Trigger Values Freshwater 95% (2000) | 0.0034          | ID        | ID             | ID             | ID            | 0.008           |
| ANZECC Water Quality Trigger Values Freshwater 90% (2000) | 0.0056          | ID        | ID             | ID             | ID            | 0.015           |
| ANZECC Water Quality Trigger Values Freshwater 80% (2000) | 0.0094          | ID        | ID             | ID             | ID            | 0.031           |
| ANZECC Water Quality Guidelines – Freshwater (1992)       | 0.001-0.005     | ID        | ID             | ID             | ID            | 0.005-0.05      |
| Limit of reporting  | 0.001           | 0.05      | 0.001          | 0.01           | 0.002         | 0.001           |

## Appendix C – Salinity measurements and tolerance limits

| Salt Measurement Conversions |      |          |       |        |  |
|------------------------------|------|----------|-------|--------|--|
| mS/cm                        | mS/m | ppm,mg/L | ppt   | gr/gal |  |
| 0                            | 0    | 0        | 0     | 0      | ↑<br>distilled water                                 |
| 0.1                          | 10   | 55       | 0.06  | 4      |  |
| 0.2                          | 20   | 110      | 0.11  | 8      |  |
| 0.3                          | 30   | 165      | 0.17  | 12     |  |
| 0.4                          | 40   | 220      | 0.22  | 15     |  |
| 0.5                          | 50   | 275      | 0.28  | 19     | ↓<br><b>FRESH</b>                                    |
| 0.6                          | 60   | 330      | 0.33  | 23     |  |
| 0.7                          | 70   | 385      | 0.39  | 27     |  |
| 0.8                          | 80   | 440      | 0.44  | 31     |  |
| 0.9                          | 90   | 495      | 0.50  | 35     |  |
| 1.0                          | 100  | 550      | 0.55  | 39     | ↑<br>maximum stonefruit, citrus, peas, onion, carrot |
| 1.5                          | 150  | 825      | 0.83  | 58     |  |
| 2.0                          | 200  | 1100     | 1.10  | 77     |  |
| 2.5                          | 250  | 1375     | 1.38  | 96     |  |
| 2.7                          | 273  | 1500     | 1.50  | 105    |  |
| 3.0                          | 300  | 1650     | 1.65  | 116    | ↓<br><b>MARGINAL</b>                                 |
| 3.5                          | 350  | 1925     | 1.93  | 135    |  |
| 4.0                          | 400  | 2200     | 2.20  | 154    |  |
| 4.5                          | 450  | 2475     | 2.48  | 173    |  |
| 5.0                          | 500  | 2750     | 2.75  | 193    |  |
| 5.5                          | 550  | 3025     | 3.03  | 212    | ↑<br>maximum for people, grapes, tomato, lettuce     |
| 6.0                          | 600  | 3300     | 3.30  | 231    |  |
| 6.5                          | 650  | 3575     | 3.58  | 250    |  |
| 7.0                          | 700  | 3850     | 3.85  | 270    |  |
| 7.5                          | 750  | 4125     | 4.13  | 289    |  |
| 8.0                          | 800  | 4400     | 4.40  | 308    | ↓<br><b>BRACKISH</b>                                 |
| 8.5                          | 850  | 4675     | 4.68  | 327    |  |
| 9.0                          | 900  | 4950     | 4.95  | 347    |  |
| 9.1                          | 910  | 5005     | 5.01  | 350    |  |
| 9.5                          | 950  | 5225     | 5.23  | 366    |  |
| 10.0                         | 1000 | 5500     | 5.50  | 385    | ↑<br>maximum for milk cows and poultry, olives, figs |
| 10.5                         | 1050 | 5775     | 5.78  | 404    |  |
| 11.0                         | 1100 | 6050     | 6.05  | 424    |  |
| 11.5                         | 1150 | 6325     | 6.33  | 443    |  |
| 12.0                         | 1200 | 6600     | 6.60  | 462    |  |
| 12.5                         | 1250 | 6875     | 6.88  | 481    | ↓<br>maximum for pigs                                |
| 13.0                         | 1300 | 7150     | 7.15  | 501    |  |
| 13.5                         | 1350 | 7425     | 7.43  | 520    |  |
| 14.0                         | 1400 | 7700     | 7.70  | 539    |  |
| 14.5                         | 1450 | 7975     | 7.98  | 558    |  |
| 15.0                         | 1500 | 8250     | 8.25  | 578    | ↑<br><b>SALINE</b>                                   |
| 15.5                         | 1550 | 8525     | 8.53  | 597    |  |
| 16.0                         | 1600 | 8800     | 8.80  | 616    |  |
| 16.5                         | 1650 | 9075     | 9.08  | 635    |  |
| 17.0                         | 1700 | 9350     | 9.35  | 655    |  |
| 17.5                         | 1750 | 9625     | 9.63  | 674    | ↓<br>maximum septic Tanks                            |
| 18.0                         | 1800 | 9900     | 9.90  | 693    |  |
| 18.5                         | 1850 | 10175    | 10.18 | 712    |  |
| 19.0                         | 1900 | 10450    | 10.45 | 732    |  |
| 19.5                         | 1950 | 10725    | 10.73 | 751    |  |
| 20.0                         | 2000 | 11000    | 11.00 | 770    | ↓<br>maximum beef cattle                             |
| 20.5                         | 2050 | 11275    | 11.28 | 789    |  |
| 21                           | 2100 | 11550    | 11.55 | 809    |  |
| 21.5                         | 2150 | 11825    | 11.83 | 828    |  |
| 22                           | 2200 | 12100    | 12.10 | 847    |  |
| 22.5                         | 2250 | 12375    | 12.38 | 866    | ↓<br>maximum sheep                                   |
| 23                           | 2300 | 12650    | 12.65 | 886    |  |
| 23.5                         | 2350 | 12925    | 12.93 | 905    |  |
| 24                           | 2400 | 13200    | 13.20 | 924    |  |
| 24.5                         | 2450 | 13475    | 13.48 | 943    |  |
| 25                           | 2500 | 13750    | 13.75 | 963    | ↓<br>sea water<br>sea water                          |
| 30                           | 3000 | 16500    | 16.50 | 1155   |  |
| 53                           | 5300 | 29150    | 29.15 | 2041   |  |
| 64                           | 6400 | 35200    | 35.20 | 2464   |  |
| 11.97                        | 1197 | 6584     | 6.58  | 461    |  |

### Measurement Units

mS/cm = millisiemens per cm  
 mS/m = millisiemens per metre  
 ppm = parts per million  
 mg/L = milligrams per litre  
 gr/gal = grains per gallon

### Conversion Factors

mS/m x 100 = mS/cm  
 mS/m x 5.5 = mg/L  
 mS/m x 0.385 = gr/gallon  
 mS/m x 10 = EC uS/cm  
 gr/gall x 14.25 = mg/L

**Appendix D - Hardness-Modified Trigger Value calculations based on varying water hardness (Table 3.4.4. ANZECC & ARMCANZ, 2000).**

| <b>Hardness category (mg/L as CaCO<sub>3</sub>)</b> | <b>Water Hardness (mg/L as CaCO<sub>3</sub>)</b> | <b>Cd (mg/L)</b> | <b>Cr(III) (mg/L)</b> | <b>Cu (mg/L)</b> | <b>Pb (mg/L)</b> | <b>Ni (mg/L)</b> | <b>Zn (mg/L)</b> |
|---|--|------------------|-----------------------|------------------|------------------|------------------|------------------|
| Soft (0-59)   | 30   | TV               | TV                    | TV               | TV               | TV               | TV               |
| Moderate (60-119)                                   | 90   | *2.7             | *2.5                  | *2.5             | *4               | *2.5             | *2.5             |
| Hard (120-179)                                      | 150  | *4.2             | *3.7                  | *3.9             | *7.6             | *3.9             | *3.9             |
| Very Hard (180-240)                                 | 210  | *5.7             | *4.9                  | *5.2             | *11.8            | *5.2             | *5.2             |
| Extremely Hard (>400)                               | 400  | *10              | *8.4                  | *9               | *26.7            | *9               | *9               |